

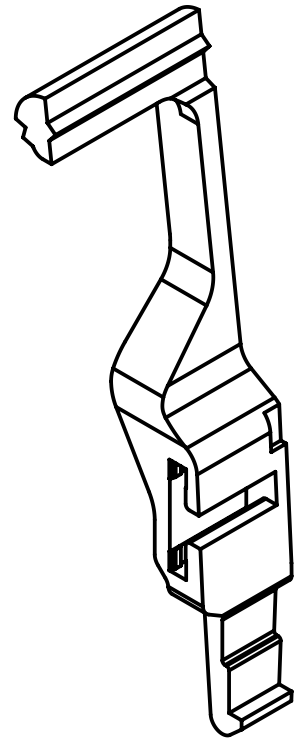
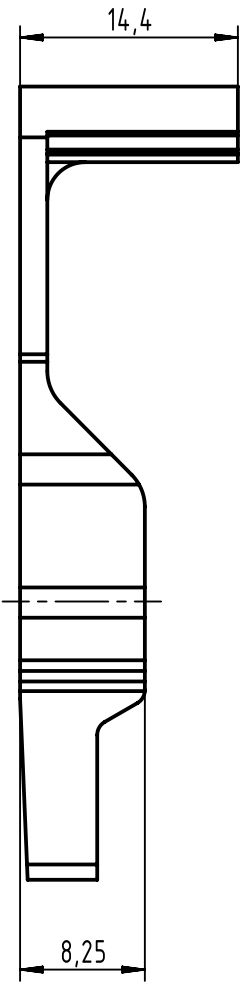
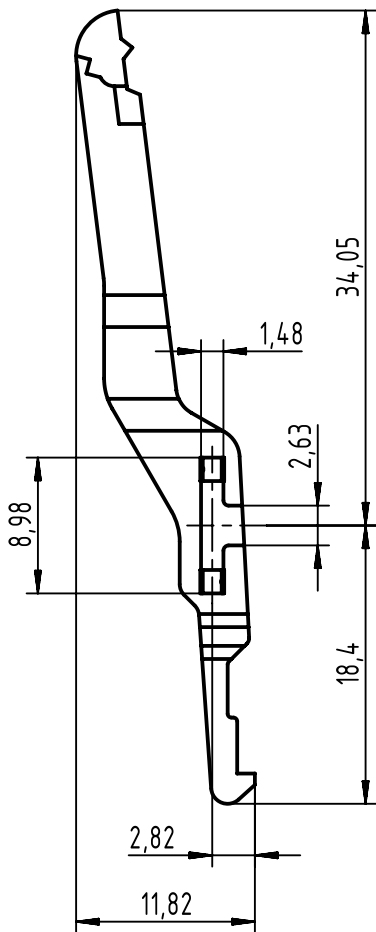
1 2 3 4 5 6


A

B

C

D



	All rights reserved Department EC PD - DE	All Dimensions in mm Original Size DIN A4		Scale 2:1	Free size tol.	Ref. Sub. TB 09 06 000 9913 / 34333 / 09.05.2007	
		Created by TADJE	Inspected by ZWAHR	Standardisation HOFFMANN	Date 2015-10-05	State Final Release	
HARTING Electronics GmbH D-32339 Espelkamp		Title DIN Power locking lever for shell housing B				Doc-Key / ECM-Nr. 100083634/UGD/003/B 500000094989	
		Type TB	Number 09060009913		Rev. B	Page 1/1	