

Industrial Connectors Selection Guides

CAT.No.IND-GC-D001.FEB.2021



**Japan Aviation Electronics
Industry, Limited**

Compact Servo Motor Connectors

Low-cost, Lightweight All-plastic Connector JN14 Series



Connector
Details



Features >

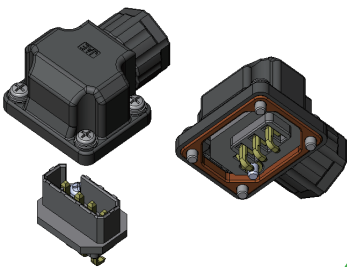
- Low-cost, lightweight all-plastic connector
- Secure mating structure with excellent vibration resistance and waterproof
- Selectable cable exit orientation
- Can be mounted to a metal motor enclosure

General Specifications >

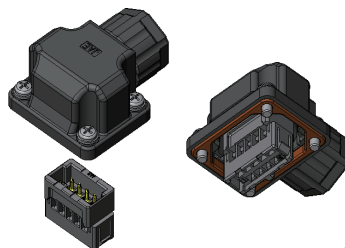
Number of Contacts	4 (For power)、 2 (For brake)、 9 (For encoder)
Rated Current (by contact size)	4 pos. : 7A max., 2 pos. / 9 pos. : 1A max.
Rated Voltage	4 pos. : AC 240V、 2 pos. / 9 pos. : AC 100V
Dielectric Withstanding Voltage	4 pos. : AC 1,500V、 2 pos. / 9 pos. : AC 500V
Insulation Resistance	4 pos. : 1,000MΩ min., 2 pos. / 9 pos. : 100MΩ min.
Durability	50 cycles
Operating Temperature	-40℃~+125℃

■ All Plastic: Lightweight and Low-cost

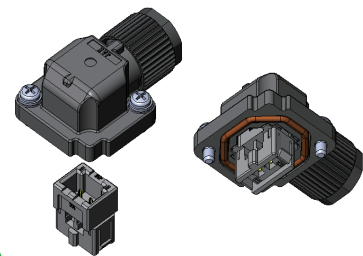
[4 pos.] For power



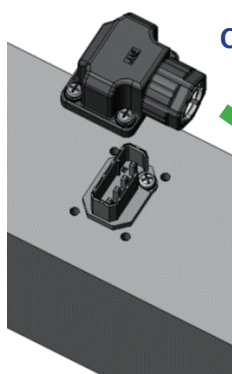
[9 pos.] For encoder



[2 pos.] For brake



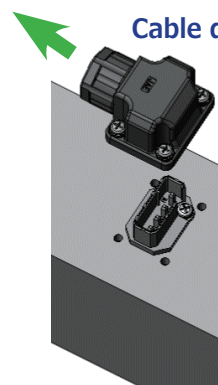
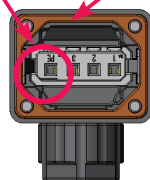
■ User preference selectable cable exit orientation of plug housing



Cable direction

Ground terminal

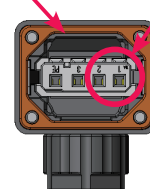
Insulator



Cable direction

Insulator

Ground terminal



Before placing an order

- ① The values specified in this catalogue are only for reference. The products and specifications are subject to change without notice. Contact our sales staff for further information before considering or ordering any of our products. For purchase, a product specification must be agreed upon.
- ② Users are requested to provide protection circuits and redundancy circuits to ensure safety of the equipment, and sufficiently review the suitability of JAE's products to the equipment.
- ③ The products presented in this catalogue are designed for the uses recommended below. We strongly suggest you contact our sales staff when considering use of any of the products in any other way than the recommended applications or for a specific use that requires an extremely high reliability.

(1) Applications that require consultation:

- (i) Please contact us if you are considering use involving a quality assurance program that you specify or that is peculiar to the industry, such as:
 - Automotive electrical components, train control, telecommunications devices (mainline), traffic light control, electric power, combustion control, fire prevention or security systems, disaster prevention equipment, etc.
- (ii) We may separately give you our support with a quality assurance program that you specify, when you think of a use such as:
 - Aviation or space equipment, submarine repeaters, nuclear power control systems, medical equipment for life support, etc

(2) Recommended applications include:

Computers, office appliances, telecommunications devices (terminals, mobile units), measuring equipment, audiovisual equipment, home electric appliances, factory automation equipment, etc.