

1	
2	
3	
4	
5	
6	
7	
8	
9	
10	
11	
12	
13	
14	
15	
16	
17	
18	

STANDARD EXECUTIONS

- **DVA.1:** threaded studs and base plate in polished zinc-plated steel, vibration-damper body in natural rubber NR, black colour, hardness 40, 55, 70 Shore A ±5.
- **DVA.1-SST:** threaded studs and base plate in INOX AISI 304 stainless steel, vibration-damper body in natural rubber NR, black colour, hardness 55 Shore A ±5.

FEATURES AND APPLICATIONS

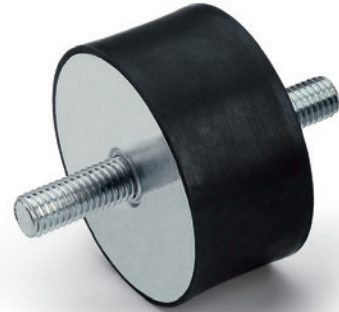
The rubber buffers have been designed to damp vibrations, shocks and noises produced by moving bodies or non-balanced vibrating masses of equipment and machines which can cause:

- malfunctioning and reduction of the machine lifespan and/or of the adjacent ones;
- damage to health;
- noise.

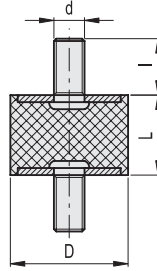
Load diagrams for each single code are available on request. See Technical data and guidelines for the choice (on page 728).

SPECIAL EXECUTIONS ON REQUEST

Natural rubber NR, hardness 40, 70 tolerance ±5 Shore A for executions with AISI 304 stainless steel base.



DVA.1



* Complete the description with the desired hardness: 40, 55 or 70 tolerance ±5 Shore A.

DVA.1 - 8 - 8 - M3 - 6 - 55
 D L d I Shore A

D				L			
mm	inch	mm	inch	mm	inch	mm	inch
8	0.31	50	1.97	8	0.31	40	1.57
10	0.39	60	2.36	10	0.39	45	1.77
15	0.59	70	2.76	13	0.51	50	1.97
20	0.79	75	2.95	15	0.59	55	2.17
25	0.98	100	3.94	20	0.79	60	2.36
30	1.18	125	4.92	25	0.98	75	2.95
40	1.57			30	1.18		

METRIC

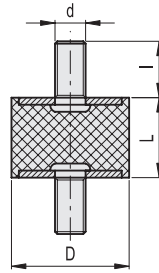
Description	D	L	d	I	⚖️	Hardness 40 Shore A				Hardness 55 Shore A				Hardness 70 Shore A			
						Code	Max load [N]	Max deflection [mm]	Stiffness [N/mm]	Code	Max load [N]	Max deflection [mm]	Stiffness [N/mm]	Code	Max load [N]	Max deflection [mm]	Stiffness [N/mm]
DVA.1-8-8-M3-6-*	8	8	M3	6	1	413801	50	2	25	411101	85	2	43	416501	150	2	75
DVA.1-8-13-M3-6-*	8	13	M3	6	2	413803	62	3	19	411003	94	3	29	416503	133	3	41
DVA.1-10-10-M4-10-*	10	10	M4	10	2	413811	75	3	30	411121	100	3	40	416511	200	3	80
DVA.1-10-15-M4-10-*	10	15	M4	10	3	413821	65	4	17	411131	100	4	26	416521	150	4	40
DVA.1-10-20-M4-10-*	10	20	M4	10	3	413823	59	5	12	411133	93	5	19	416523	96	5	19
DVA.1-15-8-M4-10-*	15	8	M4	10	5	413831	437	2	219	411141	537	2	269	416531	1325	2	663
DVA.1-15-10-M4-10-*	15	10	M4	10	6	413841	210	3	84	411151	325	3	130	416541	717	3	287
DVA.1-15-15-M4-10-*	15	15	M4	10	7	413851	155	4	41	411161	280	4	75	416551	513	4	137
DVA.1-15-20-M4-10-*	15	20	M4	10	8	413861	151	5	30	411171	234	5	47	416561	468	5	94
DVA.1-15-25-M4-10-*	15	25	M4	10	9	413863	133	6	21	411019	234	6	37	411173	498	6	80
DVA.1-20-15-M6-18-*	20	15	M6	18	18	413871	322	4	86	411181	479	4	128	416571	1044	4	278
DVA.1-20-20-M6-18-*	20	20	M6	18	25	413881	220	5	44	411201	430	5	86	416581	995	5	199
DVA.1-20-25-M6-18-*	20	25	M6	18	20	413891	264	6	42	411211	433	6	69	416591	1010	6	162
DVA.1-20-30-M6-18-*	20	30	M6	18	23	413893	214	8	29	411213	417	8	56	416593	978	8	130
DVA.1-25-15-M6-18-*	25	15	M6	18	28	413901	860	4	229	411221	1068	4	285	416601	2690	4	717
DVA.1-25-20-M6-18-*	25	20	M6	18	31	413911	391	5	78	411241	620	5	124	416611	1533	5	307
DVA.1-25-25-M6-18-*	25	25	M6	18	35	413921	441	6	71	411261	529	6	85	416621	1374	6	220
DVA.1-25-30-M6-18-*	25	30	M6	18	38	413931	432	8	58	411271	524	8	70	416631	1208	8	161
DVA.1-30-15-M8-20-*	30	15	M8	20	45	413941	986	4	263	411281	2100	1.5	1400	416641	2700	1.5	1800
DVA.1-30-20-M8-20-*	30	20	M8	20	50	413951	770	5	154	411301	1067	5	213	416651	2260	5	452
DVA.1-30-30-M8-20-*	30	30	M8	20	57	413961	500	8	67	411321	1055	8	141	416661	1960	8	261
DVA.1-30-40-M8-20-*	30	40	M8	20	65	413963	649	10	65	411323	932	10	93	416663	2000	10	200
DVA.1-40-20-M8-23-*	40	20	M8	23	80	413971	1800	5	360	411331	2430	5	486	416671	4450	5	890
DVA.1-40-30-M8-23-*	40	30	M8	23	95	413981	1137	8	152	411341	1574	8	210	416681	3420	8	456
DVA.1-40-40-M8-23-*	40	40	M8	23	100	413991	1056	10	106	411361	1397	10	140	416691	3190	10	319
DVA.1-50-20-M10-28-*	50	20	M10	28	130	414001	3030	5	606	411381	4100	5	820	416701	9240	5	1848
DVA.1-50-30-M10-28-*	50	30	M10	28	184	414011	2010	8	268	411401	3300	8	440	416711	5450	8	727
DVA.1-50-40-M10-28-*	50	40	M10	28	170	414021	1477	10	148	411421	2130	10	213	416721	4940	10	494
DVA.1-50-45-M10-28-*	50	45	M10	28	180	414031	1368	11	122	411441	2046	11	182	416731	2580	11	229
DVA.1-50-50-M10-28-*	50	50	M10	28	195	414041	1500	13	120	411446	2188	13	175	416741	4750	13	380
DVA.1-60-30-M10-28-*	60	30	M10	28	211	414051	3020	8	403	411451	4170	8	556	416751	9130	8	1217
DVA.1-60-40-M10-28-*	60	40	M10	28	236	414061	2520	10	252	411456	3610	10	361	416761	6950	10	695
DVA.1-60-50-M10-28-*	60	50	M10	28	261	414063	2458	13	197	411457	3410	13	273	416763	6570	13	526
DVA.1-70-30-M10-28-*	70	30	M10	28	297	414070	6370	8	849	411460	8570	8	1143	416770	24010	8	3382
DVA.1-70-45-M10-28-*	70	45	M10	28	380	414071	3810	11	339	411461	7130	11	634	416771	13210	11	1174
DVA.1-75-25-M12-37-*	75	25	M12	37	345	414081	11000	6	1760	411471	12970	6	2075	416781	25000	6	4000
DVA.1-75-40-M12-37-*	75	40	M12	37	410	414091	4910	10	491	411481	6970	10	697	416791	15380	10	1538
DVA.1-75-55-M12-37-*	75	55	M12	37	515	414101	3470	14	252	411501	7510	14	546	416801	11240	14	817
DVA.1-100-40-M16-41-*	100	40	M16	41	765	414111	13990	10	1399	411521	20000	10	2000	416811	29000	10	2900
DVA.1-100-55-M16-41-*	100	55	M16	41	905	414121	7320	14	532	411541	13080	14	951	416821	24260	14	1764
DVA.1-100-60-M16-41-*	100	60	M16	41	950	414131	7000	15	467	411561	11290	15	753	416831	28500	15	1900
DVA.1-100-75-M16-41-*	100	75	M16	41	1090	414141	7790	19	415	411581	9640	19	514	416841	22350	19	1192
DVA.1-125-55-M16-41-*	125	55	M16	41	1320	414161	17270	14	1256	411601	19260	14	1401	416901	23610	14	3008
DVA.1-125-75-M16-41-*	125	75	M16	41	1625	414163	12235	19	653	411603	19440	19	1037	416903	21789	19	1162



Vibration damping elements



DVA.1-SST



D				L			
mm	inch	mm	inch	mm	inch	mm	inch
8	0.31	50	1.97	8	0.31	40	1.57
10	0.39	60	2.36	10	0.39	45	1.77
15	0.59	70	2.76	13	0.51	50	1.97
20	0.79	75	2.95	15	0.59	55	2.17
25	0.98	100	3.94	20	0.79	60	2.36
30	1.18	125	4.92	25	0.98	75	2.95
40	1.57			30	1.18		

DVA.1 - 8 - 8 - SST - M3 - 6 - 55
 D L Stainless steel d l Shore A



Description	D	L	d	l	⚖	Hardness 40 Shore A			Hardness 55 Shore A			Hardness 70 Shore A					
						Code	Max load [N]	Max deflection [mm]	Stiffness [N/mm]	Code	Max load [N]	Max deflection [mm]	Stiffness [N/mm]	Code	Max load [N]	Max deflection [mm]	Stiffness [N/mm]
DVA.1-8-8-SST-M3-6-55	8	8	M3	6	1		50	2	25	410001	85	2	43		150	2	75
DVA.1-8-13-SST-M3-6-55	8	13	M3	6	2		62	3	19	410003	94	3	29		133	3	41
DVA.1-10-10-SST-M4-10-55	10	10	M4	10	2		75	3	30	410005	100	3	40		200	3	80
DVA.1-10-15-SST-M4-10-55	10	15	M4	10	3		65	4	17	410007	100	4	26		150	4	40
DVA.1-10-20-SST-M4-10-55	10	20	M4	10	3		59	5	12	410009	93	5	19		96	5	19
DVA.1-15-8-SST-M4-10-55	15	8	M4	10	5		437	2	219	410011	537	2	269		1325	2	663
DVA.1-15-10-SST-M4-10-55	15	10	M4	10	6		210	3	84	410013	325	3	130		717	3	287
DVA.1-15-15-SST-M4-10-55	15	15	M4	10	7		155	4	41	410015	280	4	75		513	4	137
DVA.1-15-20-SST-M4-10-55	15	20	M4	10	8		151	5	30	410017	234	5	47		468	5	94
DVA.1-15-25-SST-M4-10-55	15	25	M4	10	9		133	6	21	410019	234	6	37		498	6	80
DVA.1-20-15-SST-M6-18-55	20	15	M6	18	18		322	4	86	410021	479	4	128		1044	4	278
DVA.1-20-20-SST-M6-18-55	20	20	M6	18	20		220	5	44	410023	430	5	86		995	5	199
DVA.1-20-25-SST-M6-18-55	20	25	M6	18	25		264	6	42	410025	433	6	69		1010	6	162
DVA.1-20-30-SST-M6-18-55	20	30	M6	18	23		214	8	29	410027	417	8	56		978	8	130
DVA.1-25-15-SST-M6-18-55	25	15	M6	18	28		860	4	229	410031	1068	4	285		2690	4	717
DVA.1-25-20-SST-M6-18-55	25	20	M6	18	31		391	5	78	410033	620	5	124		1533	5	307
DVA.1-25-25-SST-M6-18-55	25	25	M6	18	35		441	6	71	410035	529	6	85		1374	6	220
DVA.1-25-30-SST-M6-18-55	25	30	M6	18	38		432	8	58	410037	524	8	70		1208	8	161
DVA.1-30-15-SST-M8-20-55	30	15	M8	20	45		986	4	263	410041	2080	4	555		3300	4	880
DVA.1-30-20-SST-M8-20-55	30	20	M8	20	50		770	5	154	410043	1067	5	213		2260	5	452
DVA.1-30-30-SST-M8-20-55	30	30	M8	20	57		500	8	67	410045	1055	8	141		1960	8	261
DVA.1-30-40-SST-M8-20-55	30	40	M8	20	65		649	10	65	410047	932	10	93		2000	10	200
DVA.1-40-20-SST-M8-23-55	40	20	M8	23	80		1800	5	360	410051	2430	5	486		4450	5	890
DVA.1-40-30-SST-M8-23-55	40	30	M8	23	95		1137	8	152	410053	1574	8	210		3420	8	456
DVA.1-40-40-SST-M8-23-55	40	40	M8	23	100		1056	10	106	410055	1397	10	140		3190	10	319
DVA.1-50-20-SST-M10-28-55	50	20	M10	28	130		3030	5	606	410061	4100	5	820		9240	5	1848
DVA.1-50-30-SST-M10-28-55	50	30	M10	28	184		2010	8	268	410063	3300	8	440		5450	8	727
DVA.1-50-40-SST-M10-28-55	50	40	M10	28	170		1477	10	148	410065	2130	10	213		4940	10	494
DVA.1-50-45-SST-M10-28-55	50	45	M10	28	180		1368	11	122	410067	2046	11	182		2580	11	229
DVA.1-50-50-SST-M10-28-55	50	50	M10	28	195		1500	13	120	410069	2188	13	175		4750	13	380
DVA.1-60-30-SST-M10-28-55	60	30	M10	28	211		3020	8	403	410071	4170	8	556		9130	8	1217
DVA.1-60-40-SST-M10-28-55	60	40	M10	28	236		2520	10	252	410073	3610	10	361		6950	10	695
DVA.1-60-50-SST-M10-28-55	60	50	M10	28	261		2458	13	197	410075	3410	13	273		6570	13	526
DVA.1-70-30-SST-M10-28-55	70	30	M10	28	297		6370	8	849	410076	8570	8	1143		24010	8	3382
DVA.1-70-45-SST-M10-28-55	70	45	M10	28	380		3810	11	339	410077	7130	11	634		13210	11	1174
DVA.1-75-25-SST-M12-37-55	75	25	M12	37	345		11000	6	1760	410081	12970	6	2075		25000	6	4000
DVA.1-75-40-SST-M12-37-55	75	40	M12	37	410		4910	10	491	410083	6970	10	697		15380	10	1538
DVA.1-75-55-SST-M12-37-55	75	55	M12	37	515		3470	14	252	410085	7510	14	546		11240	14	817
DVA.1-100-40-SST-M16-41-55	100	40	M16	41	765		13990	10	1399	410091	20000	10	2000		29000	10	2900
DVA.1-100-55-SST-M16-41-55	100	55	M16	41	905		7320	14	532	410093	13080	14	951		24260	14	1764
DVA.1-100-60-SST-M16-41-55	100	60	M16	41	950		7000	15	467	410095	11290	15	753		28500	15	1900
DVA.1-100-75-SST-M16-41-55	100	75	M16	41	1090		7790	19	415	410097	9640	19	514		22350	19	1192
DVA.1-125-55-SST-M16-41-55	125	55	M16	41	1320		17270	14	1256	410098	19260	14	1401		23610	14	3008
DVA.1-125-75-SST-M16-41-55	125	75	M16	41	1600		12235	19	653	410099	19440	19	1037		21789	19	1162

ON REQUEST

ON REQUEST

Vibration damping elements