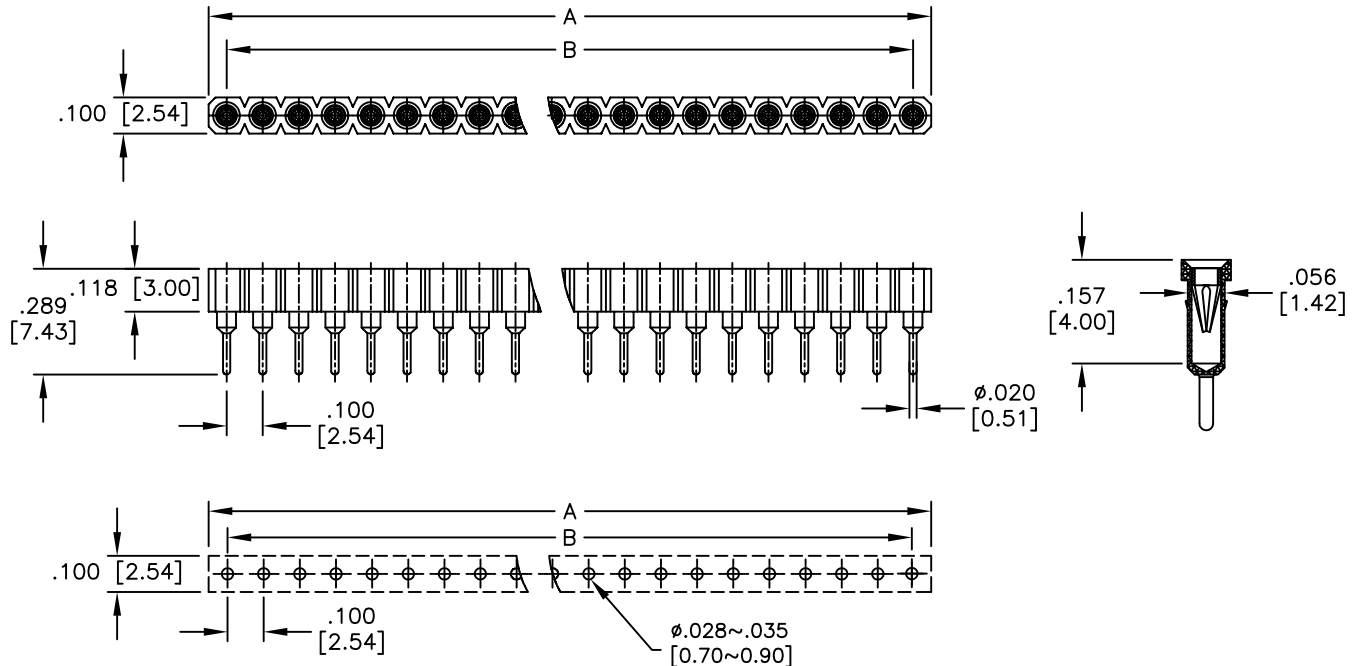


APPROVED: _____
 DATE: _____ TITLE: _____

Rev	AWO #	Description	Date	Appr
-		RELEASED	1/28/05	
A		TAIL LENGTH	4/12/06	
B		REDRAWN	10/3/11	
C		ADDED SECTION & DIM.	11/20/17	HR/NP



RECOMMENDED PCB LAYOUT

SPECIFICATIONS:

Material:

Insulator: PBT, Glass reinforced, rated UL 94V-0

Insulator color: Black

Contacts: Copper alloy

Sleeve: Brass

Plating:

Inner contact: Gold flash over Nickel underplate

Outer sleeve: Tin over Copper underplate overall

Electrical:

Rated voltage : 100V RMS/ 150VDC

Current rating: 3 Amp

Contact resistance: 4 mohms max

Insulation resistance: 10,000 Mohms min @ 500 VAC

Mechanical :

Average insertion force : < 250g

With steel pin of $\phi 0.017 [0.43]$ mm

Average withdrawal force : > 50g

With steel pin of $\phi 0.017 [0.43]$ mm

Mechanical life : min. 200

Temperature Rating:

Operating temperature : Gold plated : -55 °C to + 125 °C

(Continuous) Tin plated : -40 °C to + 105 °C

Environmental:

Lead free, RoHS compliant



Positions: 1 thru 40

A = .100 [2.54] x No. of Positions

B = .100 [2.54] x No. of Spaces

UNLESS OTHERWISE SPECIFIED
 ALL DIMENSIONS ARE INCHES [MM]
 TOLERANCES: EXCEPT AS NOTED

INCHES		HOLES	
.X	± .10	Ø.X	± .10
.XX	± .020	Ø.XX	± .015
.XXX	± .015	Ø.XXX	± .010

ADAM TECH

909 Rahway Avenue, Union, NJ 07083
 Phone: 908-687-5000 Fax: 908-687-5710

TITLE: SCREW MACHINE CONTACT SOCKET
 .100" SPACING, GOLD/TIN PLATED

APPROVALS		DATE
DRAWN	SS	1/28/05
CHECKED		
APPROVED		

SIZE	PART NO.	REV.
X	SMC-1-XX-1-GT	C
REF: S00007T	SCALE: NTS	SHEET 1 OF 1