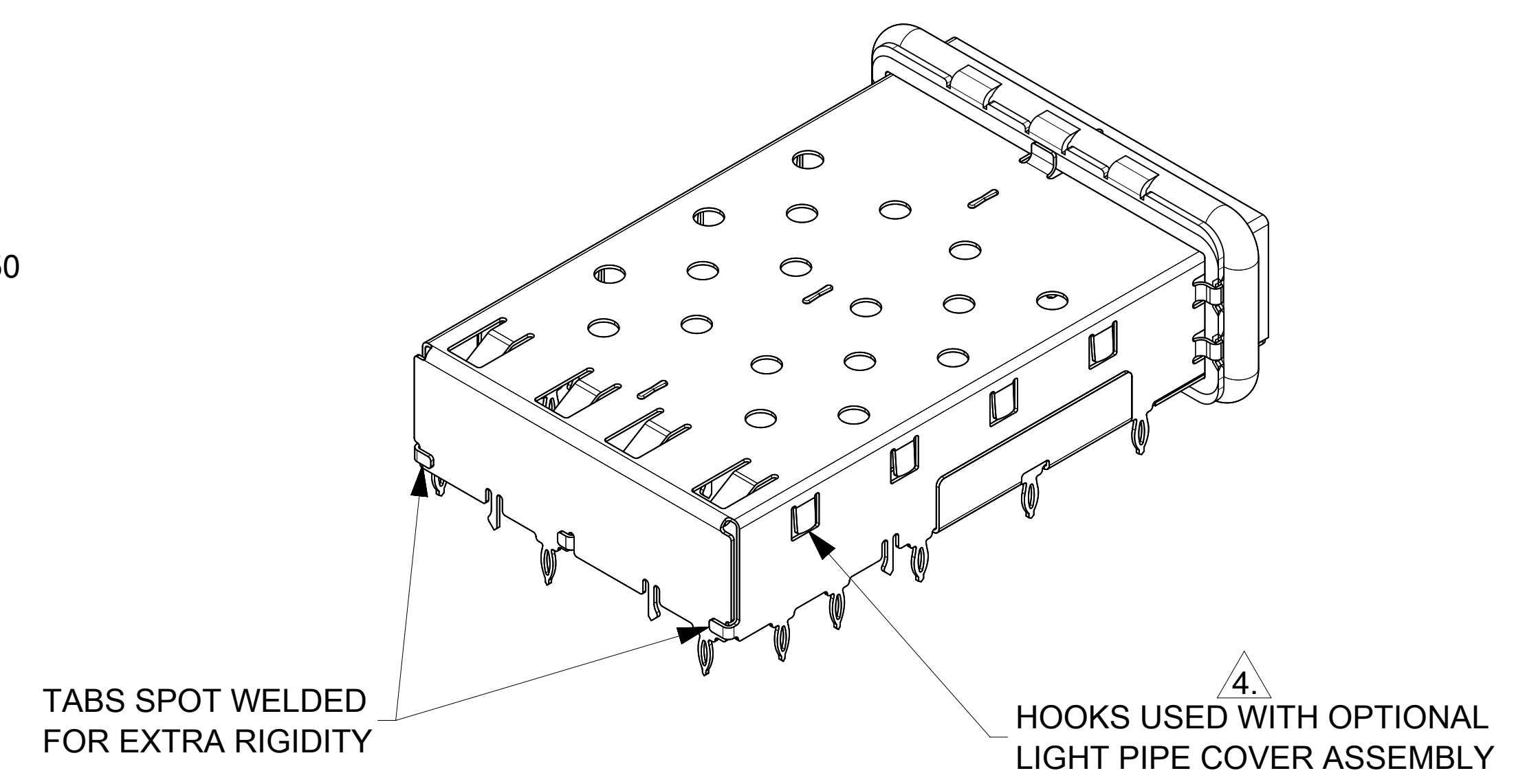
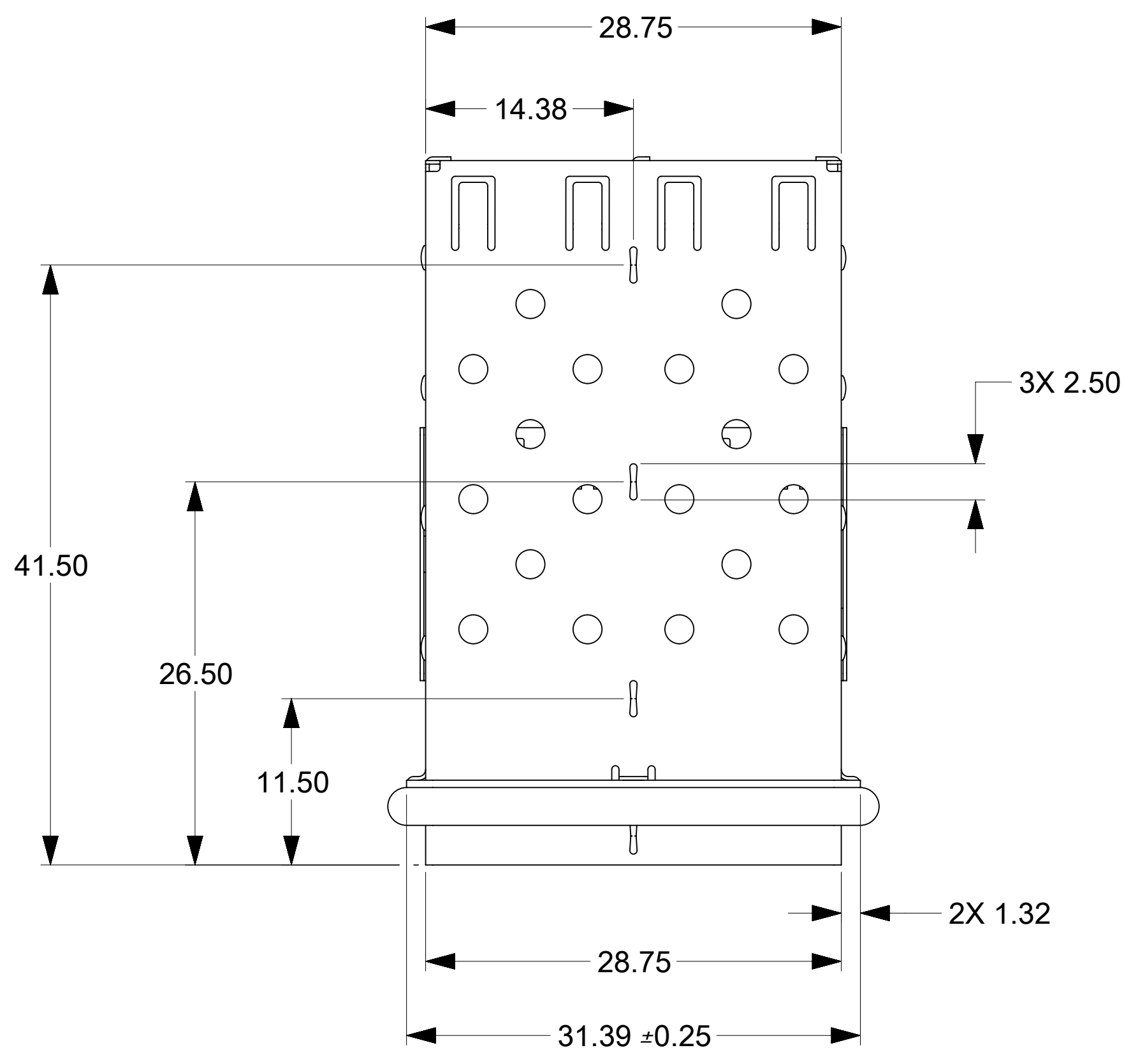
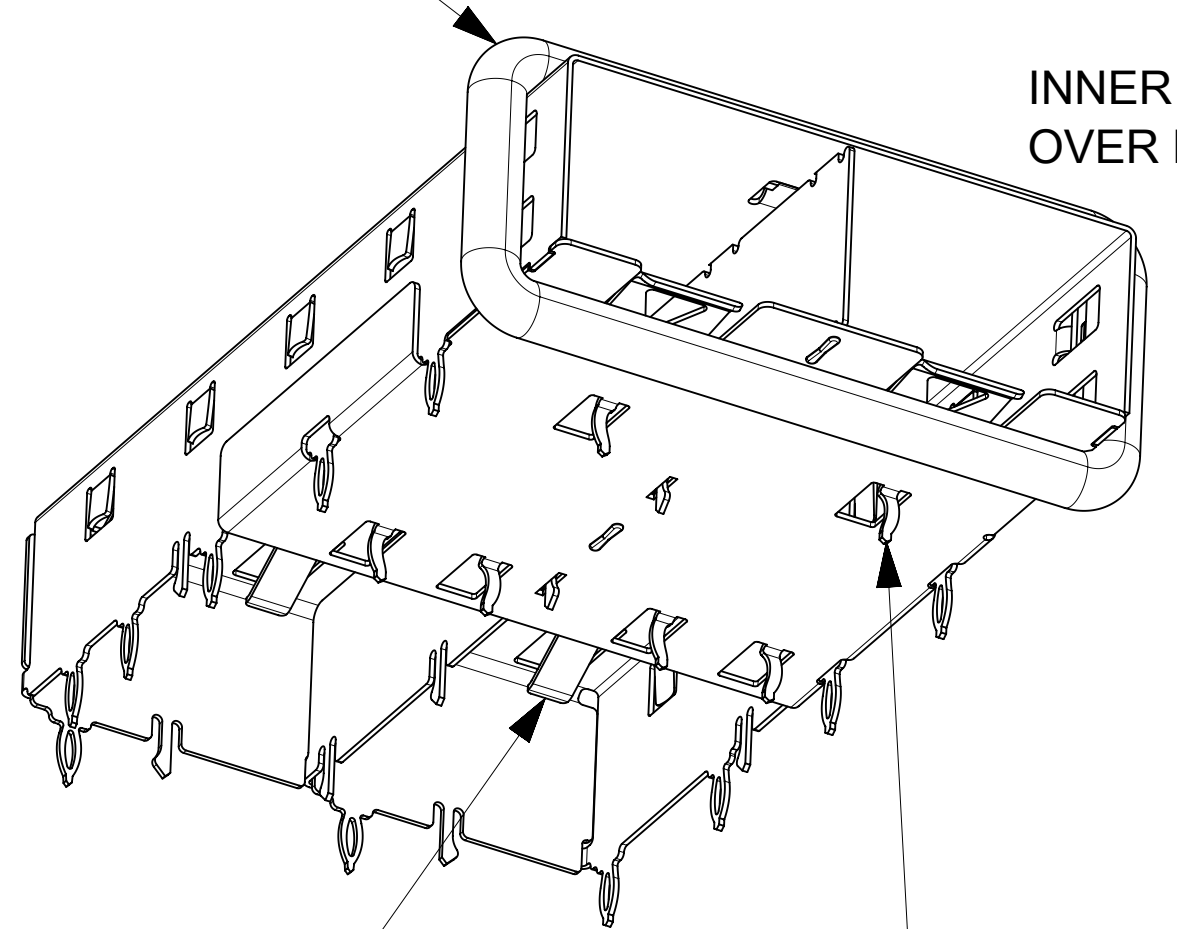


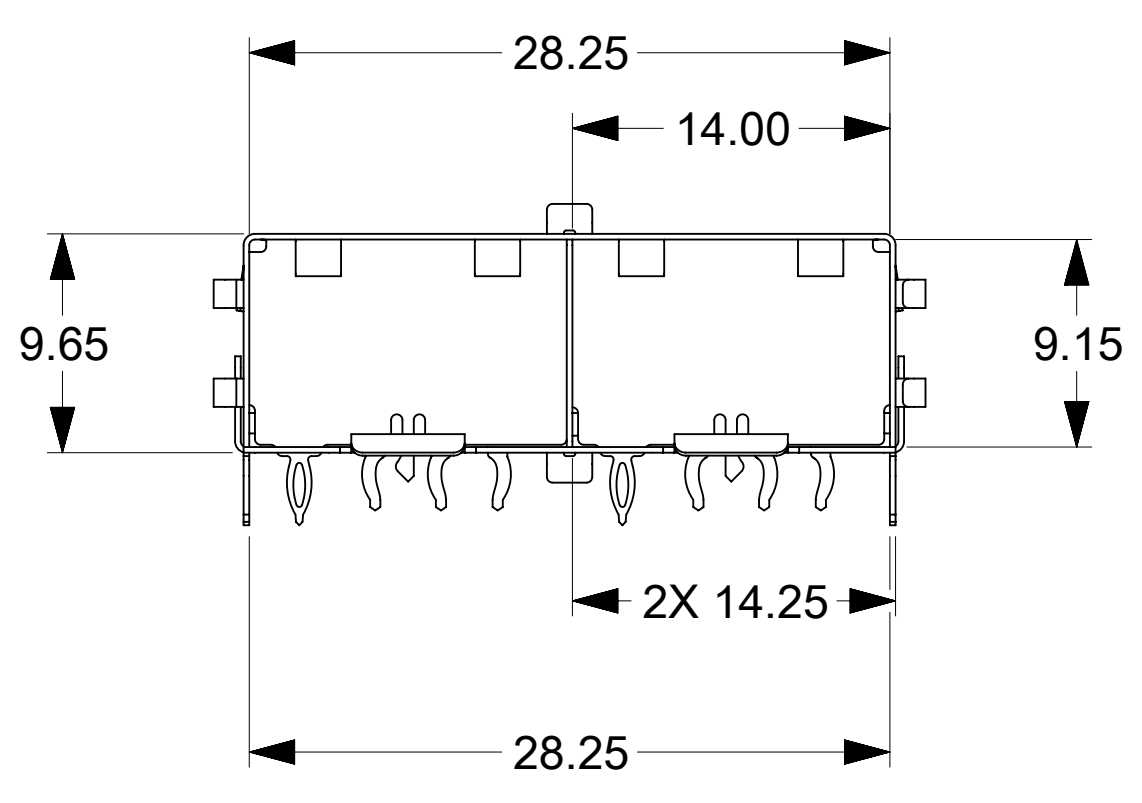
- NOTES:**
- PRESS FIT LEGS 3.05 LONG-  
1.57 MINIMUM PCB THICKNESS FOR SINGLE SIDED USE.  
3.00 MINIMUM PCB THICKNESS FOR BELLY TO BELLY USE.
  - MATERIAL: COPPER ALLOY  
PLATING: NONE  
NOTE: A NICKEL PLATED VERSION OF THIS ASSEMBLY IS AVAILABLE.  
REFER TO DOCUMENT SD-74722-004
  - REFERENCE DOCUMENTS:  
PRODUCT SPECIFICATION: PS-74728-000  
COSMETIC SPECIFICATIONS: WI-HP-2774 AND WI-HPA-7-0093  
TEST SUMMARY: TS-73927-0250.
  - MATES WITH SERIES 74727, LIGHT PIPE COVER ASSEMBLY.
  - NO RoHS EXEMPTIONS.



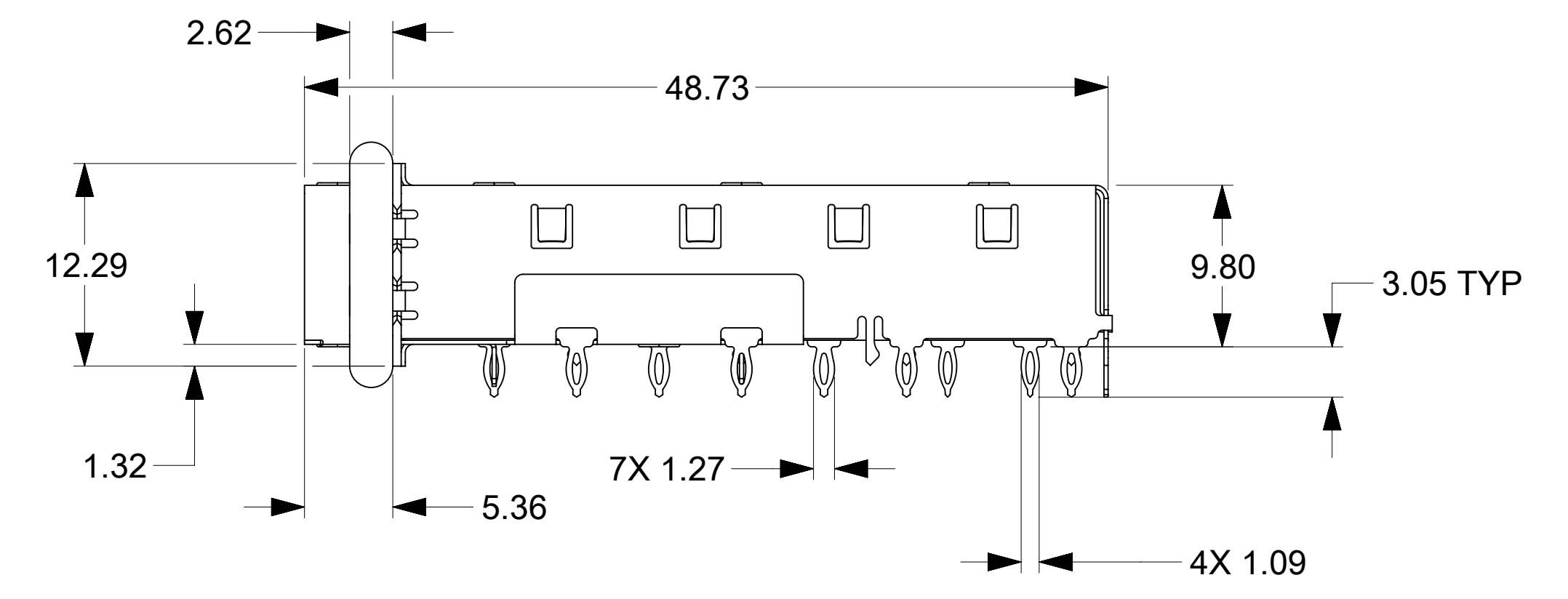
360° ELASTOMER EMI GASKET COMPLIES WITH (SFP) MSA BOARD AND BEZEL LOCATIONS



INNER WALL TABS ARE COINED OVER BASE AND COVER FOR RIGIDITY



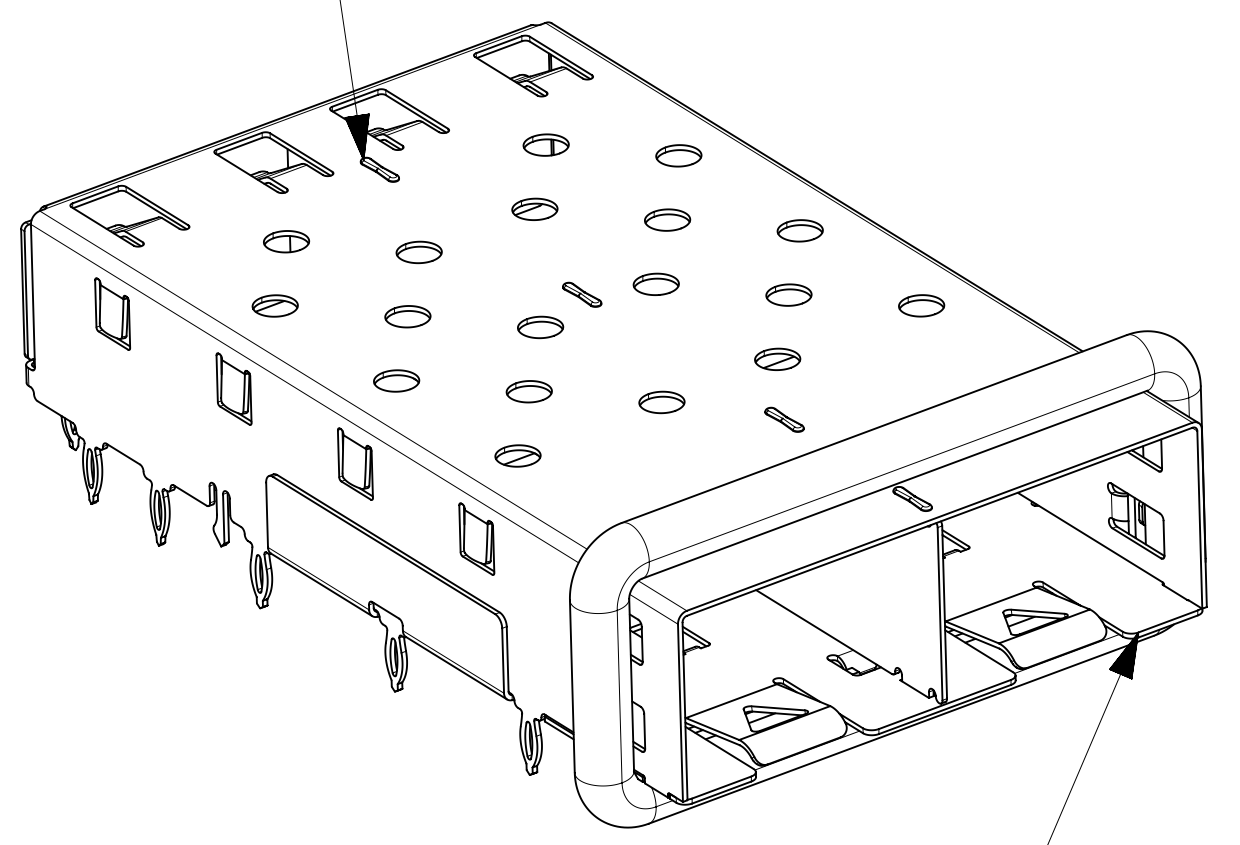
GASKET AND FRAME REMOVED FOR CLARITY



PART NUMBER  
739270250

EMI FINGERS CONTACT ADAPTER

6 UNDER BELLY EMI PINS

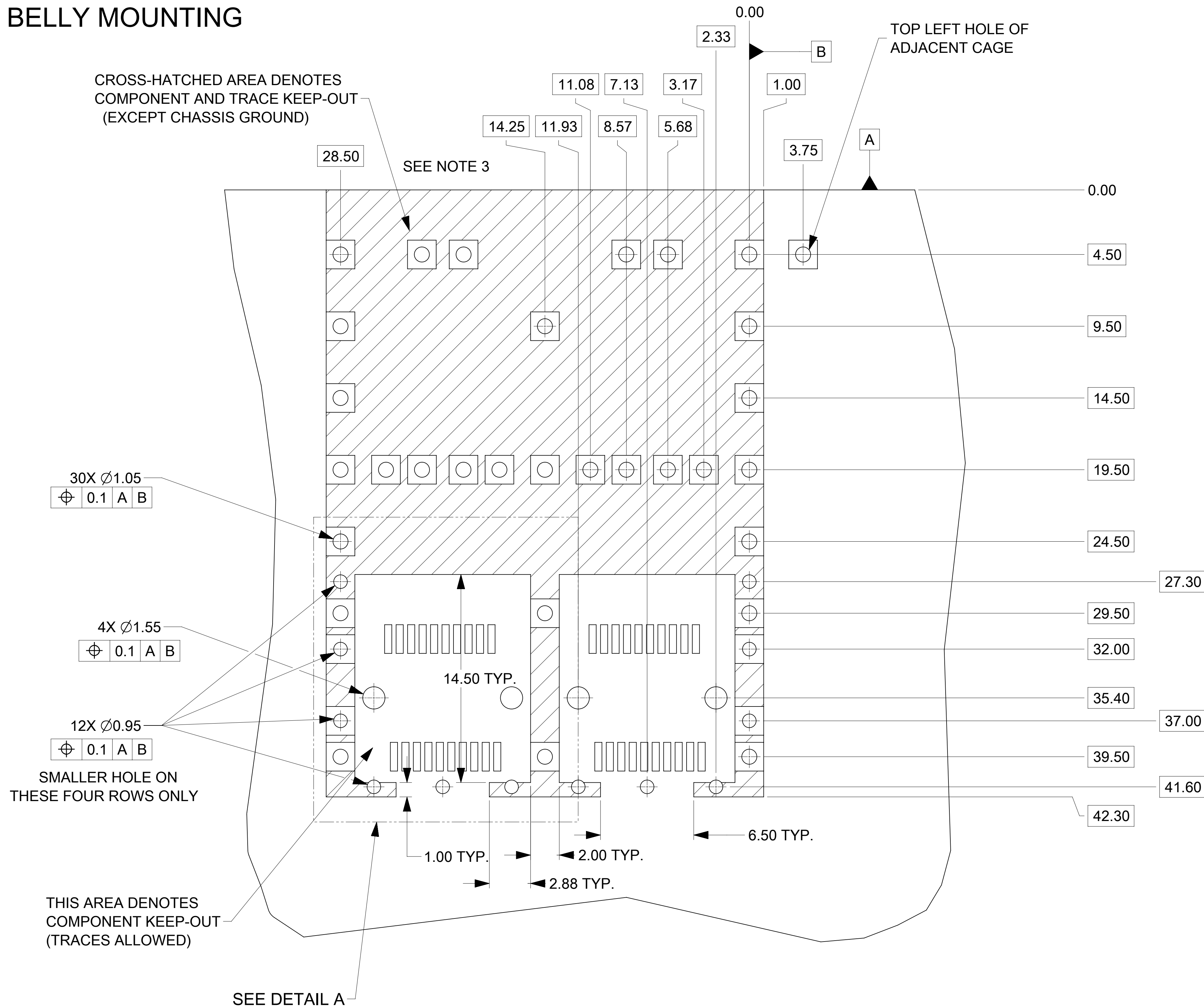


DIMENSIONS OF EACH INNER CAGE DESIGNED TO FUNCTION WITH SMALL FORM-FACTOR PLUGGABLE (SFP) TRANSCEIVER

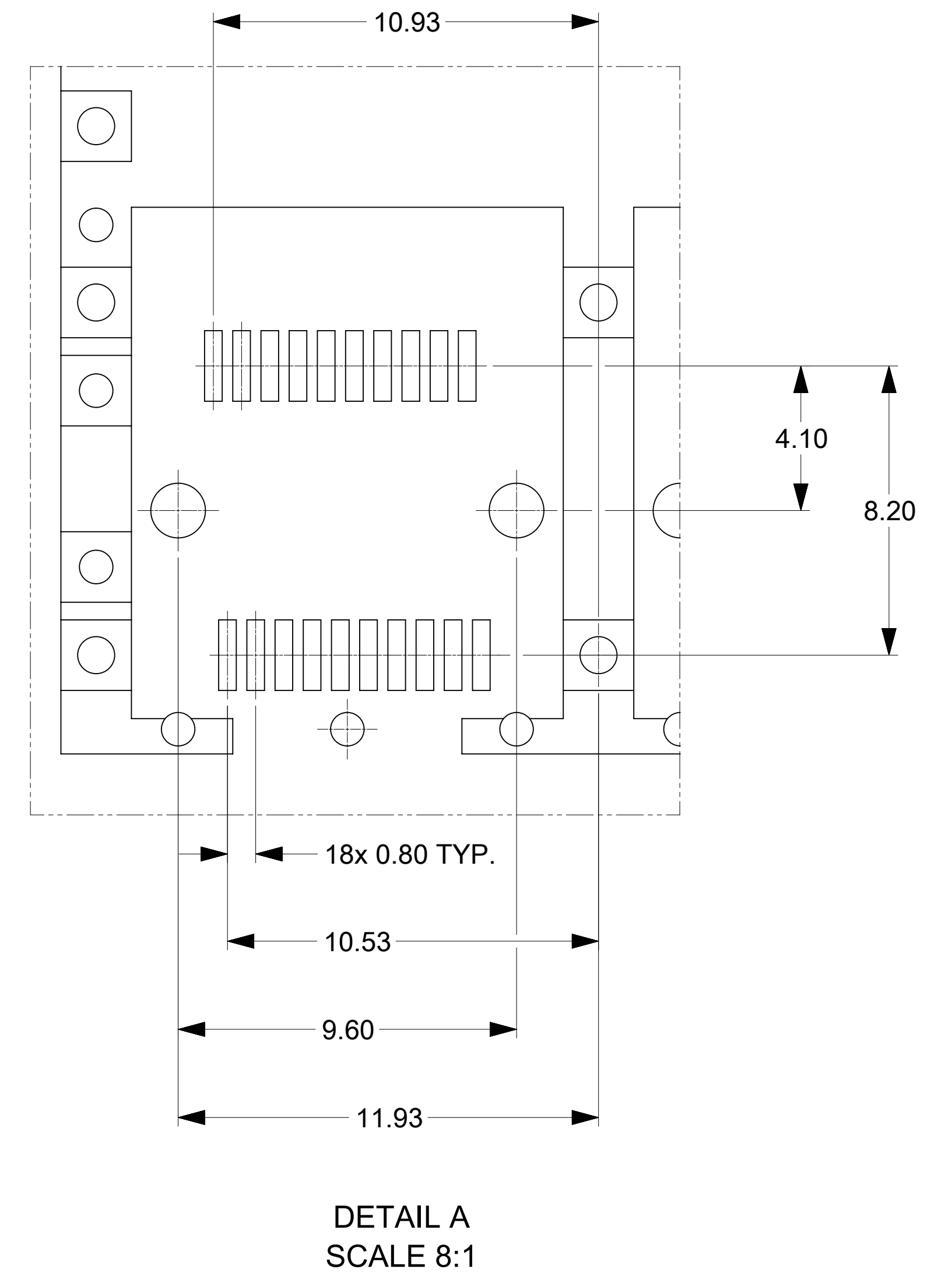
THIS DRAWING CONTAINS INFORMATION THAT IS PROPRIETARY TO MOLEX ELECTRONIC TECHNOLOGIES, LLC AND SHOULD NOT BE USED WITHOUT WRITTEN PERMISSION

DIMENSION UNITS		SCALE		CURRENT REV DESC:				<b>molex</b>				
MM		3:1										
GENERAL TOLERANCES (UNLESS SPECIFIED)						EC NO: 620216		1X2 SFP GANGED CAGE ASSEMBLY PRESS FIT				
		MM	INCH	DRWN: AKUMAR19		2018/05/31						
4 PLACES ±		±	±	CHK'D: GGA		2019/07/09		PRODUCT CUSTOMER DRAWING				
3 PLACES ±		±	±	APPR: GGA		2019/07/09		DOCUMENT NUMBER				
2 PLACES ±		0.13	±	INITIAL REVISION:		2003/09/25		SD-73927-250		DOC TYPE	DOC PART	REVISION
1 PLACE ±		0.25	±	DRWN: KSIMONSO		2010/03/16		PSD		001	E	
0 PLACES ±		±	±	APPR: KJANOTA		2010/03/16		GENERAL MARKET		SHEET NUMBER		
ANGULAR TOL ± 1.0°				DRAFT WHERE APPLICABLE MUST REMAIN WITHIN DIMENSIONS		THIRD ANGLE PROJECTION		D-SIZE		73927		
DOCUMENT STATUS		P1	RELEASE DATE	2019/07/09	04:16:22	MATERIAL NUMBER		SEE TABLE		1 OF 5		

# PCB LAYOUT FOR BELLY TO BELLY MOUNTING



## HOST CONNECTOR DETAIL



- NOTES:
1. PADS AND VIAS GO TO CHASSIS GROUND, (34 PLACES). RECOMMENDED PADS TO BE 2mm SQUARE.
  2. PLATING OPTIONAL FOR THROUGH HOLES (8 PLACES)
  3. RECOMMENDED PLATING INCLUDES HASL, IMMERSION (GOLD, SILVER, OR TIN), AND OSP.
  4. HOLE PATTERN REPEATS FOR EACH PORT, SPACING BETWEEN PORTS IS 14.25
  5. CONNECTOR PAD LAYOUT PER SFP MSA. WILL ACCOMODATE MOLEX CONNECTOR SERIES 74441 OR EQUIVALENT.

THIS DRAWING CONTAINS INFORMATION THAT IS PROPRIETARY TO MOLEX ELECTRONIC TECHNOLOGIES, LLC AND SHOULD NOT BE USED WITHOUT WRITTEN PERMISSION									
DIMENSION UNITS		SCALE		CURRENT REV DESC:					
MM		6:1		EC NO: 620216 DRWN: AKUMAR19 2018/05/31 2019/07/09 CHK'D: GGA APPR: GGA 2019/07/09 INITIAL REVISION: DRWN: KSIMONSO 2003/09/25 2010/03/16 APPR: KJANOTA					
GENERAL TOLERANCES (UNLESS SPECIFIED)									
	MM	INCH							
4 PLACES	±	±							
3 PLACES	±	±							
2 PLACES	±	0.13	±						
1 PLACE	±	0.25	±						
0 PLACES	±		±						
ANGULAR TOL		± 1.0°		DOCUMENT NUMBER: SD-73927-250 DOC TYPE: PSD DOC PART: 001 REVISION: E					
DRAFT WHERE APPLICABLE MUST REMAIN WITHIN DIMENSIONS		THIRD ANGLE PROJECTION		DRAWING		SERIES		MATERIAL NUMBER	
				D-SIZE		73927		SEE TABLE	
CUSTOMER		GENERAL MARKET		SHEET NUMBER		2 OF 5			

# PCB LAYOUT FOR SINGLE SIDE MOUNTING

CROSS-HATCHED AREA DENOTES  
COMPONENT AND TRACE KEEP-OUT  
(EXCEPT CHASSIS GROUND)

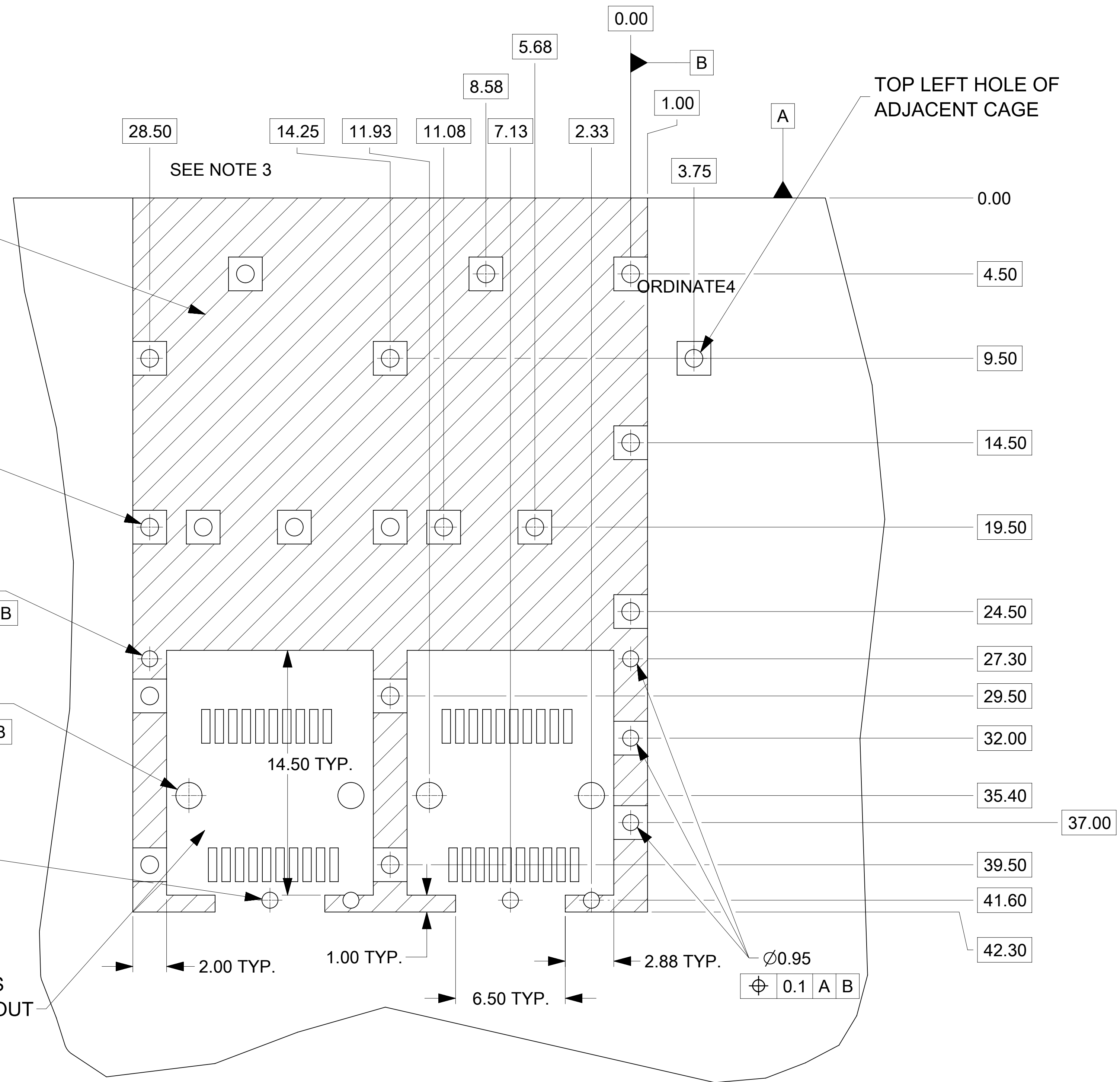
17X Ø1.05  
⊕ 0.1 A B

Ø0.95  
⊕ 0.1 A B

8X Ø1.55  
⊕ 0.1 A B

4X Ø0.95  
⊕ 0.1 A B

THIS AREA DENOTES  
COMPONENT KEEP-OUT  
(TRACES ALLOWED)



## NOTES:

1. PADS AND VIAS GO TO CHASSIS GROUND, (19 PLACES). RECOMMENDED PADS TO BE 2mm SQUARE.
2. PLATING OPTIONAL FOR THROUGH HOLES (6 PLACES)
3. RECOMMENDED PLATING INCLUDES HASL, IMMERSION (GOLD, SILVER, OR TIN), AND OSP.
4. HOLE PATTERN REPEATS FOR EACH PORT, SPACING BETWEEN PORTS IS 14.25
5. CONNECTOR PAD LAYOUT PER SFP MSA. WILL ACCOMODATE MOLEX CONNECTOR SERIES 74441 OR EQUIVALENT.

THIS DRAWING CONTAINS INFORMATION THAT IS PROPRIETARY TO MOLEX ELECTRONIC TECHNOLOGIES, LLC AND SHOULD NOT BE USED WITHOUT WRITTEN PERMISSION

DIMENSION UNITS		SCALE		CURRENT REV DESC:	
MM		6:1			
GENERAL TOLERANCES (UNLESS SPECIFIED)				EC NO: 620216	
		MM	INCH	DRWN: AKUMAR19 2018/05/31	
4 PLACES	±			2019/07/09	
3 PLACES	±			CHK'D: GGA	
2 PLACES	±	0.13		APPR: GGA 2019/07/09	
1 PLACE	±	0.25		INITIAL REVISION:	
0 PLACES	±			DRWN: KSIMONSO 2003/09/25	
ANGULAR TOL		± 1.0°		APPR: KJANOTA 2010/03/16	
DRAFT WHERE APPLICABLE MUST REMAIN WITHIN DIMENSIONS		THIRD ANGLE PROJECTION		DRAWING SERIES	
		D-SIZE		73927	
DOCUMENT NUMBER		DOC TYPE		DOC PART	
SD-73927-250		PSD		001	
REVISION		REVISION		REVISION	
E		E		E	
MATERIAL NUMBER		CUSTOMER		SHEET NUMBER	
SEE TABLE		GENERAL MARKET		3 OF 5	

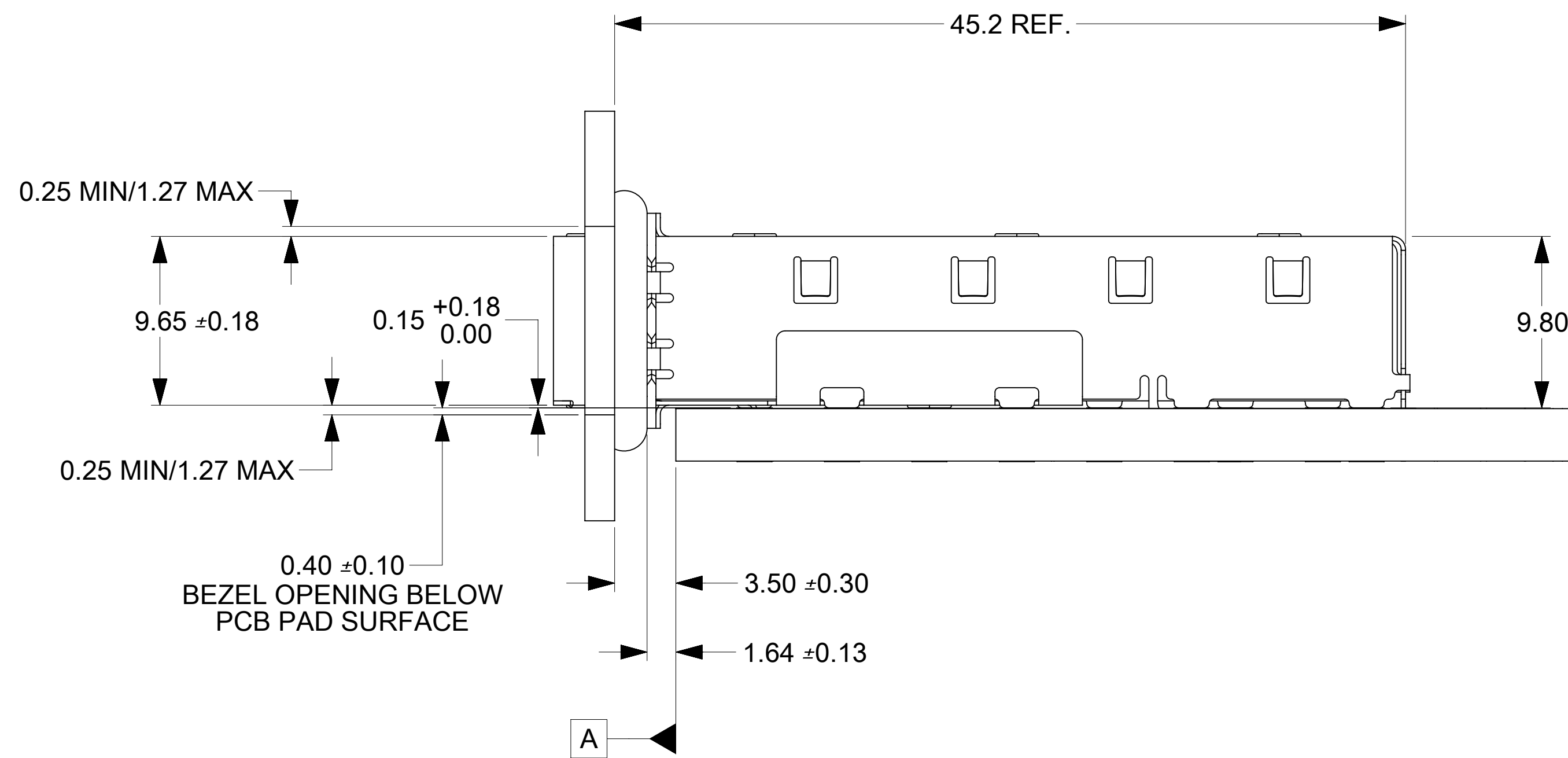
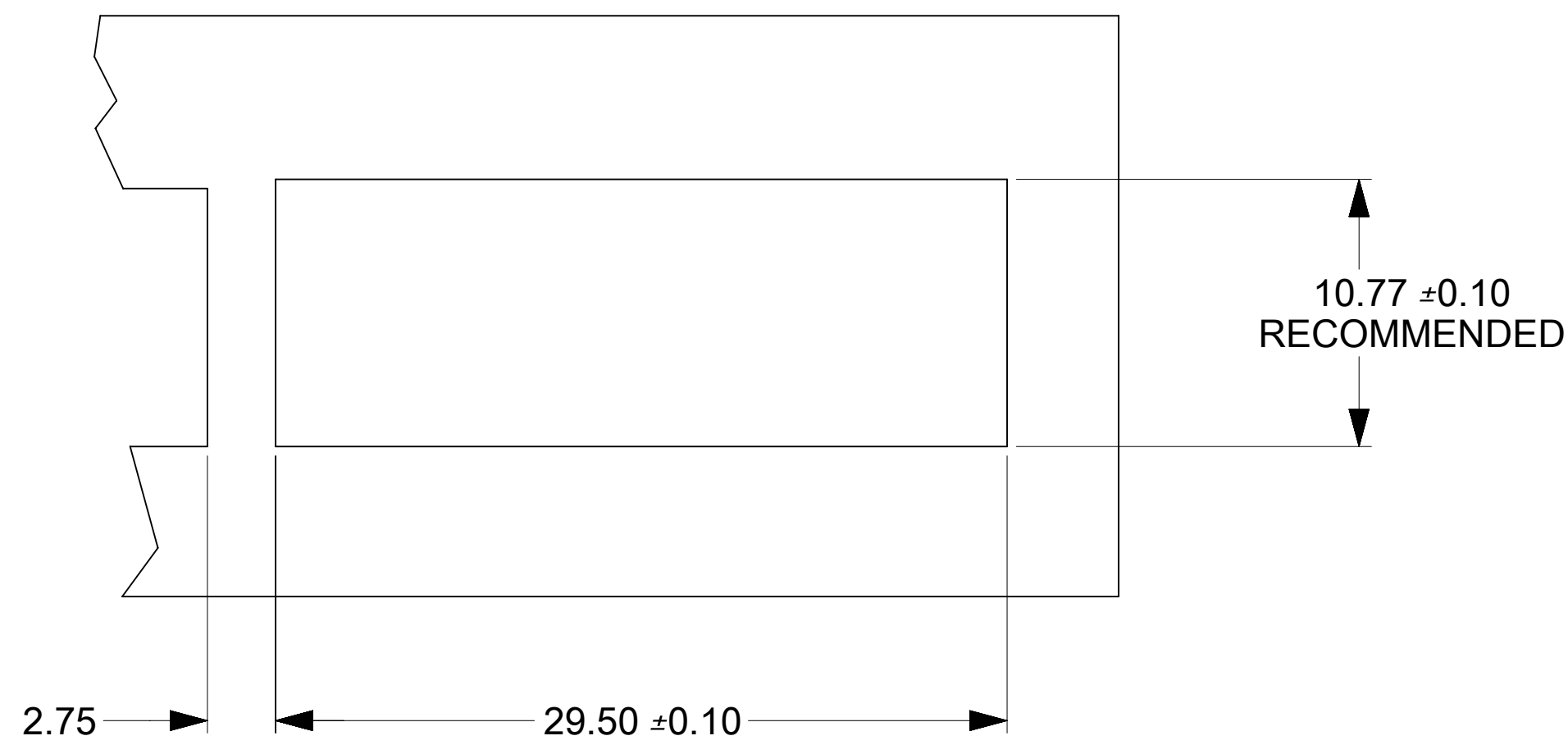
**molex**

1X2 SFP GANGED CAGE  
ASSEMBLY PRESS FIT

PRODUCT CUSTOMER DRAWING

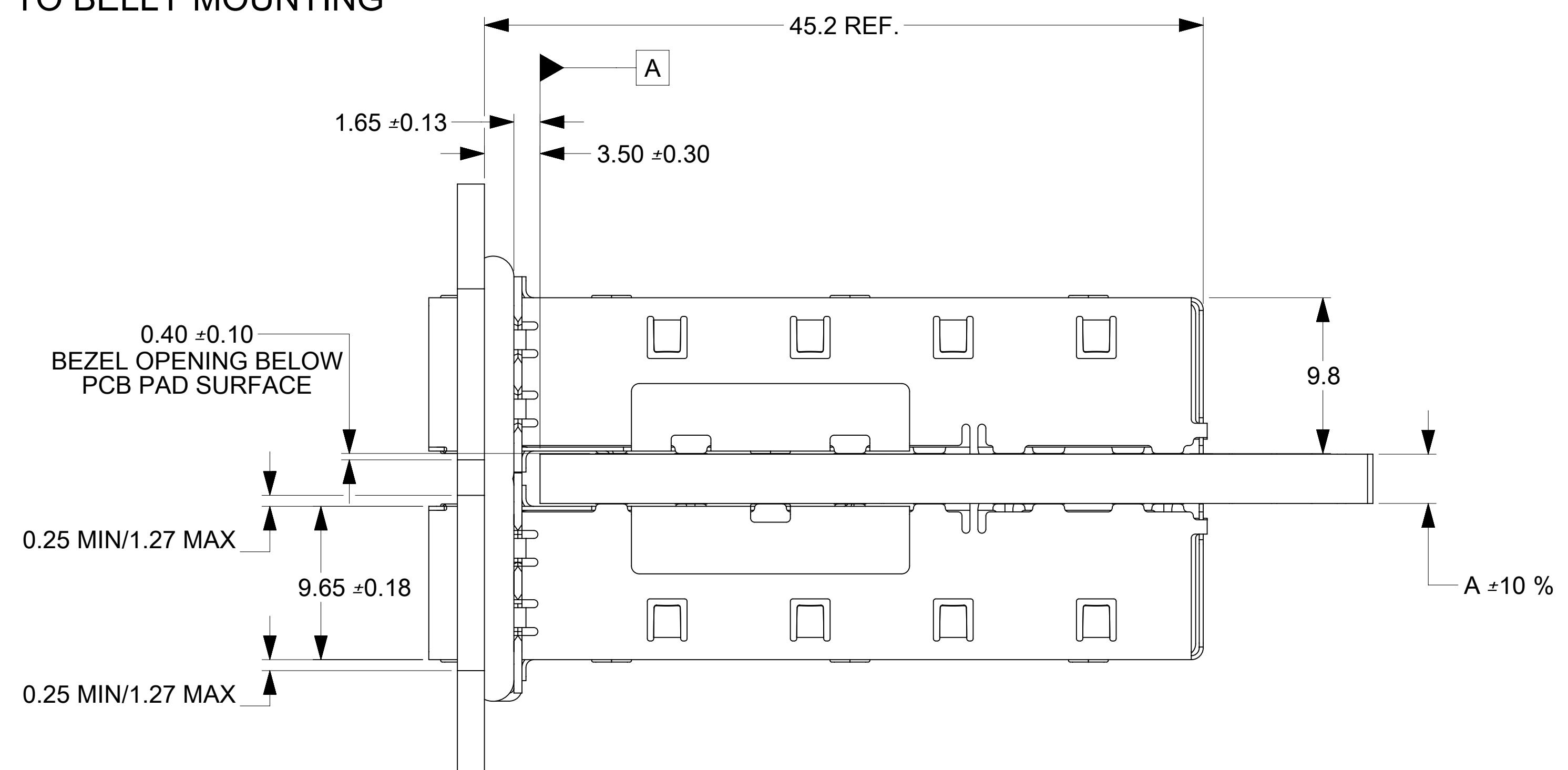
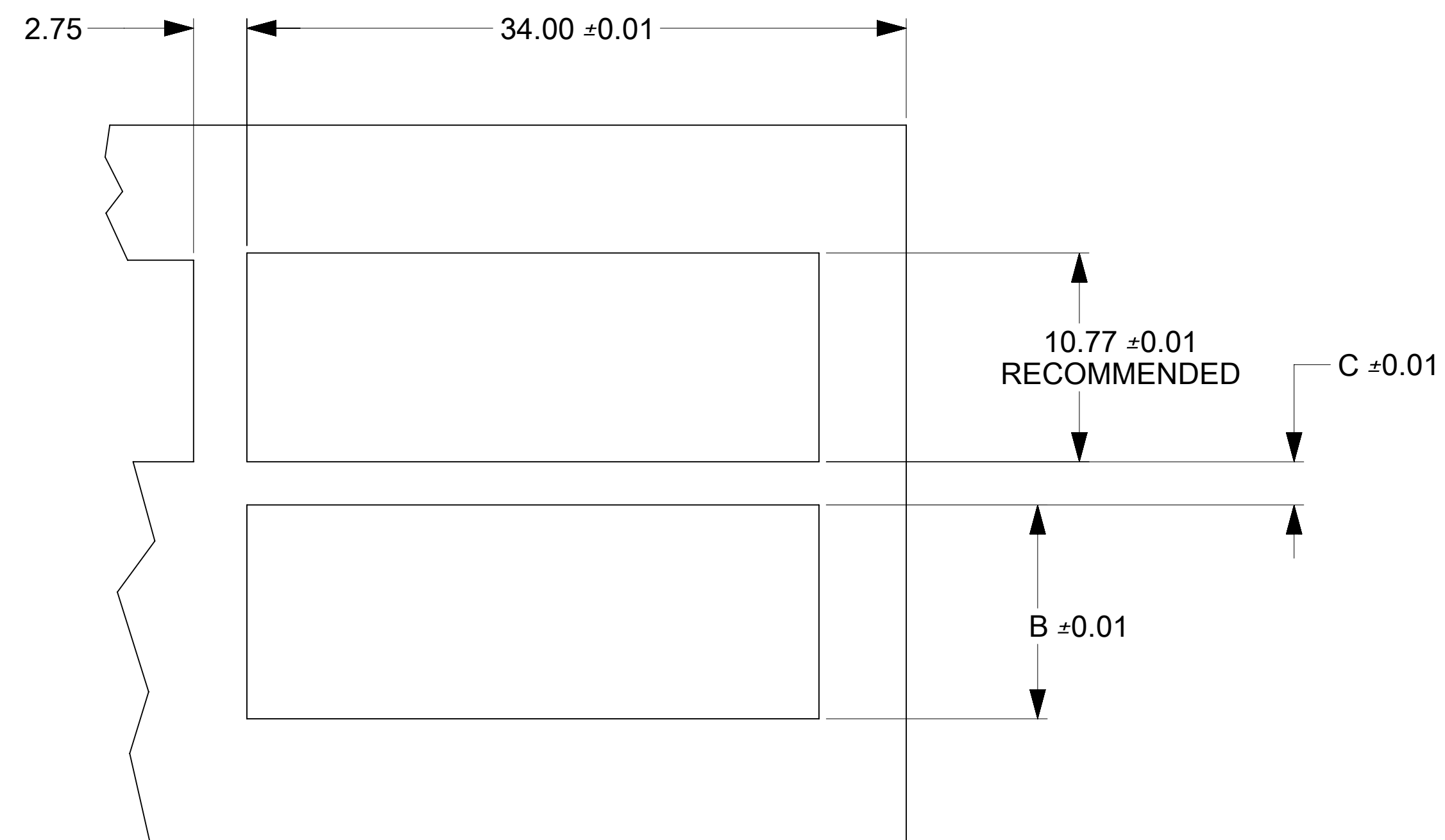
DOCUMENT NUMBER: SD-73927-250  
DOC TYPE: PSD  
DOC PART: 001  
REVISION: E

MATERIAL NUMBER: SEE TABLE  
CUSTOMER: GENERAL MARKET  
SHEET NUMBER: 3 OF 5



BEZEL AND BOARD POSITION DIMENSIONS FOR SINGLE SIDE MOUNTING

BEZEL AND BOARD POSITION DIMENSIONS FOR BELLY TO BELLY MOUNTING



NOTE:

1. FOR A GIVEN BOARD THICKNESS (A), DIMENSIONS (B) AND (C) ARE DIRECTLY AFFECTED.
2. USE RECOMMENDED DIMENSIONS AND TOLERANCES TO AID IN DEVELOPING BEZEL OPENING.
3. FOR EXAMPLE USING A BOARD THICKNESS OF .125" THE RECOMMENDED VALUES WOULD BE:

A= 3.18  
B= 11.03  
C= 2.23

THIS DRAWING CONTAINS INFORMATION THAT IS PROPRIETARY TO MOLEX ELECTRONIC TECHNOLOGIES, LLC AND SHOULD NOT BE USED WITHOUT WRITTEN PERMISSION

DIMENSION UNITS		SCALE		CURRENT REV DESC:	
MM		4:1			
GENERAL TOLERANCES (UNLESS SPECIFIED)					
		MM	INCH	EC NO: 620216	
4 PLACES	±			DRWN: AKUMAR19	2018/05/31
3 PLACES	±			CHK'D: GGA	2019/07/09
2 PLACES	±	0.13		APPR: GGA	2019/07/09
1 PLACE	±	0.25		INITIAL REVISION:	
0 PLACES	±			DRWN: KSIMONSO	2003/09/25
ANGULAR TOL		± 1.0°		APPR: KJANOTA	2010/03/16
DRAFT WHERE APPLICABLE MUST REMAIN WITHIN DIMENSIONS		THIRD ANGLE PROJECTION		DRAWING	SERIES
				D-SIZE	73927
DOCUMENT STATUS		RELEASE DATE		MATERIAL NUMBER	
P1	2019/07/09 04:16:22	SEE TABLE		CUSTOMER	
		GENERAL MARKET		SHEET NUMBER	
		4 OF 5			

**molex**

1X2 SFP GANGED CAGE ASSEMBLY PRESS FIT

PRODUCT CUSTOMER DRAWING

DOCUMENT NUMBER: SD-73927-250  
DOC TYPE: PSD  
DOC PART: 001  
REVISION: E

## REVISION HISTORY

DATE	REV	DESCRIPTION
10/27/2003	A	INITIAL RELEASE
10/06/2005	B	ADDED PCB AND BEZEL LAYOUT
12/10/2009	C	ADDED ISO VIEW WITH WELD CALLOUT
05/05/2014	D	1. ADDED 739270254 [SHT 1] 2. ADDED "MM 3D MODEL: TM-74722-000" ON LEFT TOP CORNER [SHT 1] 3. NOTE 5 CHANGED AS "NO RoHS EXEMPTIONS" [SHT 1] 4. REMOVE ALL DIMENSIONS IN INCH [SHT 1 TO 4].
31/05/2018	E	1. OBSOLETE P/N 739270254. [SHEET 1]

THIS DRAWING CONTAINS INFORMATION THAT IS PROPRIETARY TO MOLEX ELECTRONIC TECHNOLOGIES, LLC AND SHOULD NOT BE USED WITHOUT WRITTEN PERMISSION												
DIMENSION UNITS	SCALE	CURRENT REV DESC:			<h1 style="margin: 0;">molex</h1>							
MM	1:1											
GENERAL TOLERANCES (UNLESS SPECIFIED)				EC NO: 620216 DRWN: AKUMAR19      2018/05/31 CHK'D: GGA            2019/07/09 APPR: GGA            2019/07/09  INITIAL REVISION: DRWN: KSIMONSO      2003/09/25 APPR: KJANOTA        2010/03/16			1X2 SFP GANGED CAGE ASSEMBLY PRESS FIT					
	MM	INCH					PRODUCT CUSTOMER DRAWING					
4 PLACES	±	±					DOCUMENT NUMBER      DOC TYPE      DOC PART      REVISION					
3 PLACES	±	±					SD-73927-250		PSD	001	E	
2 PLACES	±	0.13	±									
1 PLACE	±	0.25	±									
0 PLACES	±	±										
ANGULAR TOL			±	1.0 °								
DRAFT WHERE APPLICABLE MUST REMAIN WITHIN DIMENSIONS				THIRD ANGLE PROJECTION 		DRAWING <b>D-SIZE</b>	SERIES <b>73927</b>	MATERIAL NUMBER SEE TABLE	CUSTOMER GENERAL MARKET	SHEET NUMBER 5 OF 5		

**NOTES:**

1. PRESS FIT LEGS 0.120" LONG-  
0.062 [1.57] MINIMUM PCB THICKNESS FOR SINGLE SIDED USE.  
0.118 [3.00] MINIMUM PCB THICKNESS FOR BELLY TO BELLY USE.

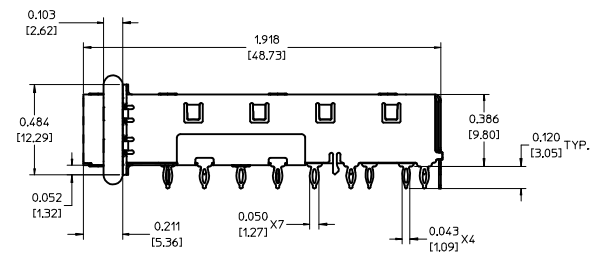
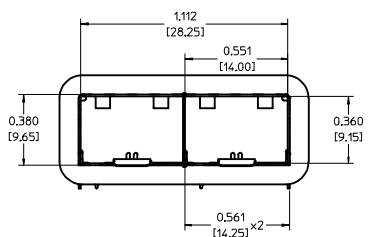
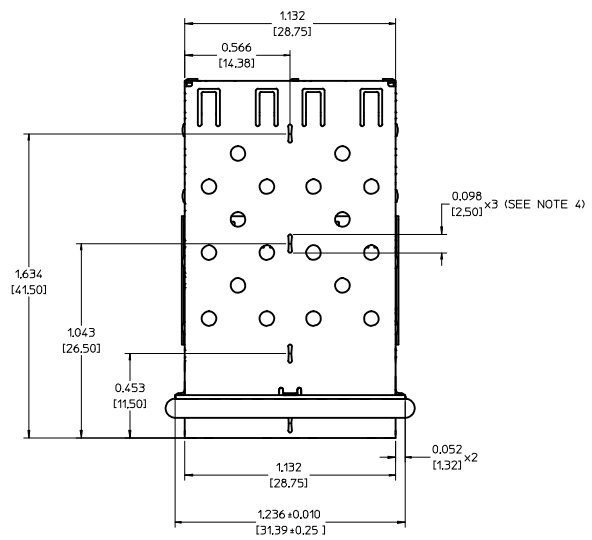
2. MATERIAL: COPPER ALLOY  
PLATING: NONE

NOTE: A NICKEL PLATED VERSION OF THIS ASSEMBLY IS AVAILABLE.  
REFER TO DOCUMENT SD-74722-004

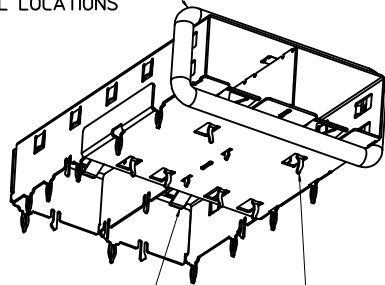
3. REFERENCE DOCUMENTS:  
PRODUCT SPECIFICATION: PS-74728-000  
COSMETIC SPECIFICATIONS: WI-HP-2774 AND WI-HPA-7-0093  
TEST SUMMARY: TS-74722-0001.

4. MATES WITH SERIES 74727, LIGHT PIPE COVER ASSEMBLY.

5. THIS PART MEETS THE RESTRICTION OF HAZARDOUS SUBSTANCES IN ELECTRICAL AND ELECTRONIC EQUIPMENT (ROHS) DIRECTIVE (2002/95/EC).



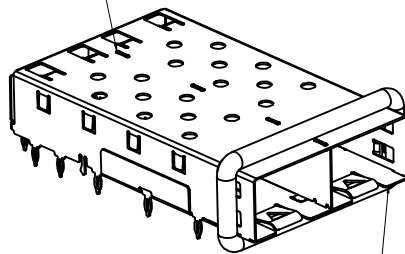
360° ELASTOMER EMI GASKET COMPLIES WITH (SFP) MSA BOARD AND BEZEL LOCATIONS



EMI FINGERS CONTACT ADAPTER

6 UNDER BELLY EMI PINS

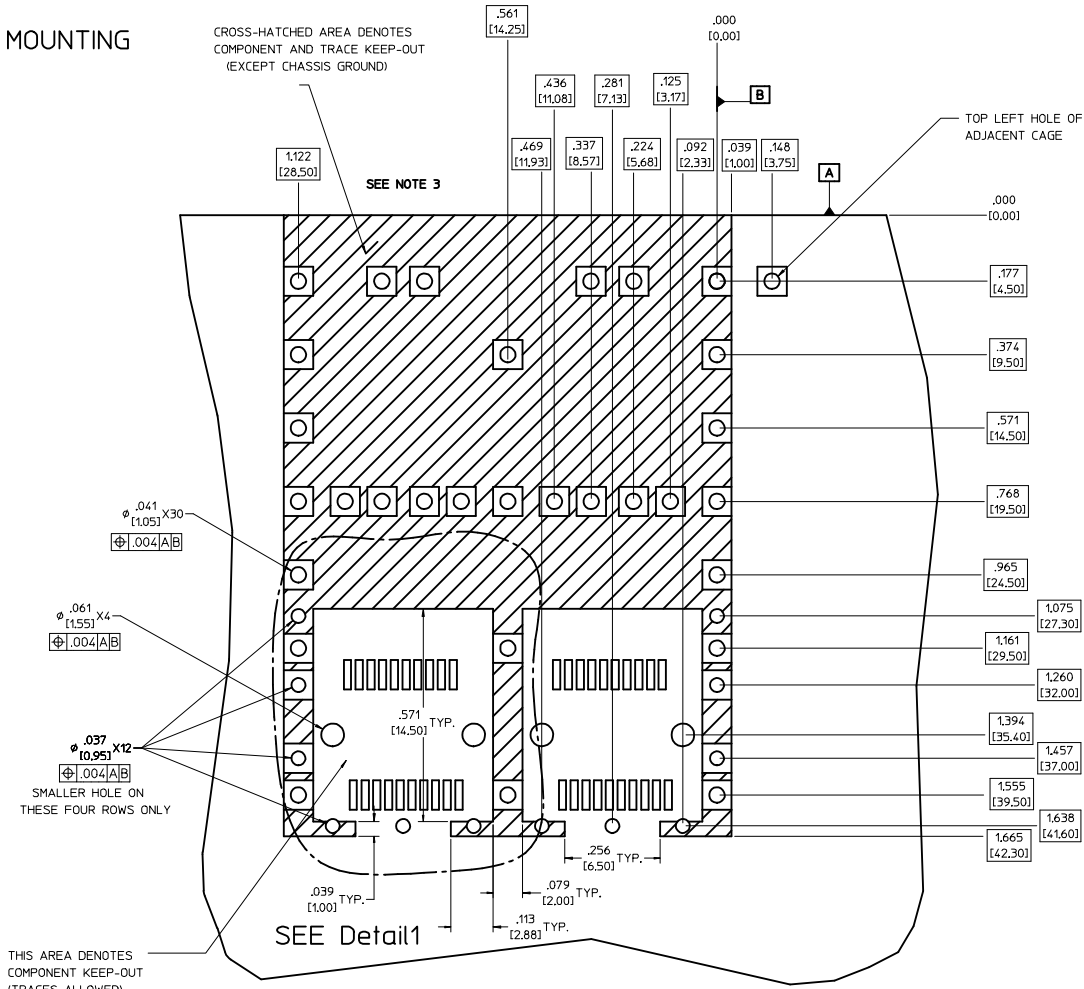
INNER WALL TABS ARE COINED OVER BASE AND COVER FOR RIGIDITY



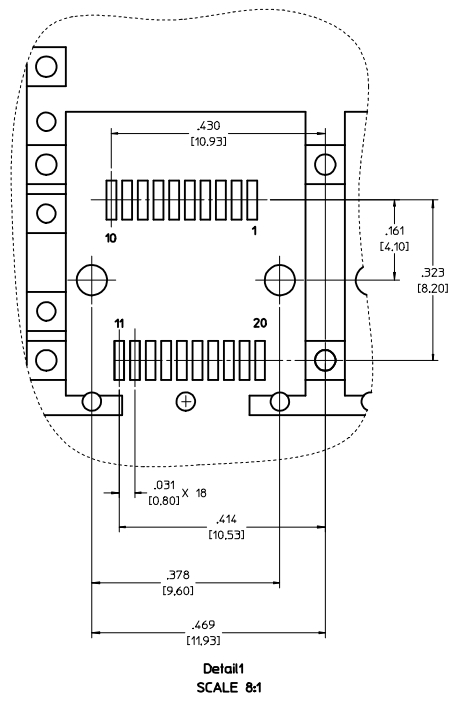
DIMENSIONS OF EACH INNER CAGE DESIGNED TO FUNCTION WITH SMALL FORM-FACTOR PLUGGABLE (SFP) TRANSCEIVER

<b>ENTER DESCRIPTION</b> EC NO: USY2006-0073 DRWKS:IMONSO 2006/01/17 CHKD:BRUSSELL 2006/01/20 APPR:BRUSSELL 2006/01/25	<b>QUALITY SYMBOLS</b> ▽=0 ▽=0	<b>GENERAL TOLERANCES (UNLESS SPECIFIED)</b>		<b>DIMENSION STYLE</b> IN/MM	<b>SCALE</b> 3:1	<b>DESIGN UNITS</b> METRIC	THIRD ANGLE PROJECTION	
		4 PLACES ±.005 3 PLACES ±.005 2 PLACES ±.013 1 PLACE ±0.25	±.005 ±.010 ±.010 ±.010	DRAWN BY KS IMONSO	DATE 2003/09/25	CHECKED BY BRUSSELL	DATE 2003/10/27	TITLE 1X2 SFP GANGED CAGE ASSEMBLY, PRESS FIT
APPROVED BY BRUSSELL	DATE 2003/10/27	ANGULAR ± 1°		MATERIAL NO. 747220001	DOCUMENT NO. SD-74722-001	MOLEX INCORPORATED		
DRAFT WHERE APPLICABLE MUST REMAIN WITHIN DIMENSIONS		SIZE D	THIS DRAWING CONTAINS INFORMATION THAT IS PROPRIETARY TO MOLEX INCORPORATED AND SHOULD NOT BE USED WITHOUT WRITTEN PERMISSION					SHEET NO. 1 OF 5

# PCB LAYOUT FOR BELLY TO BELLY MOUNTING



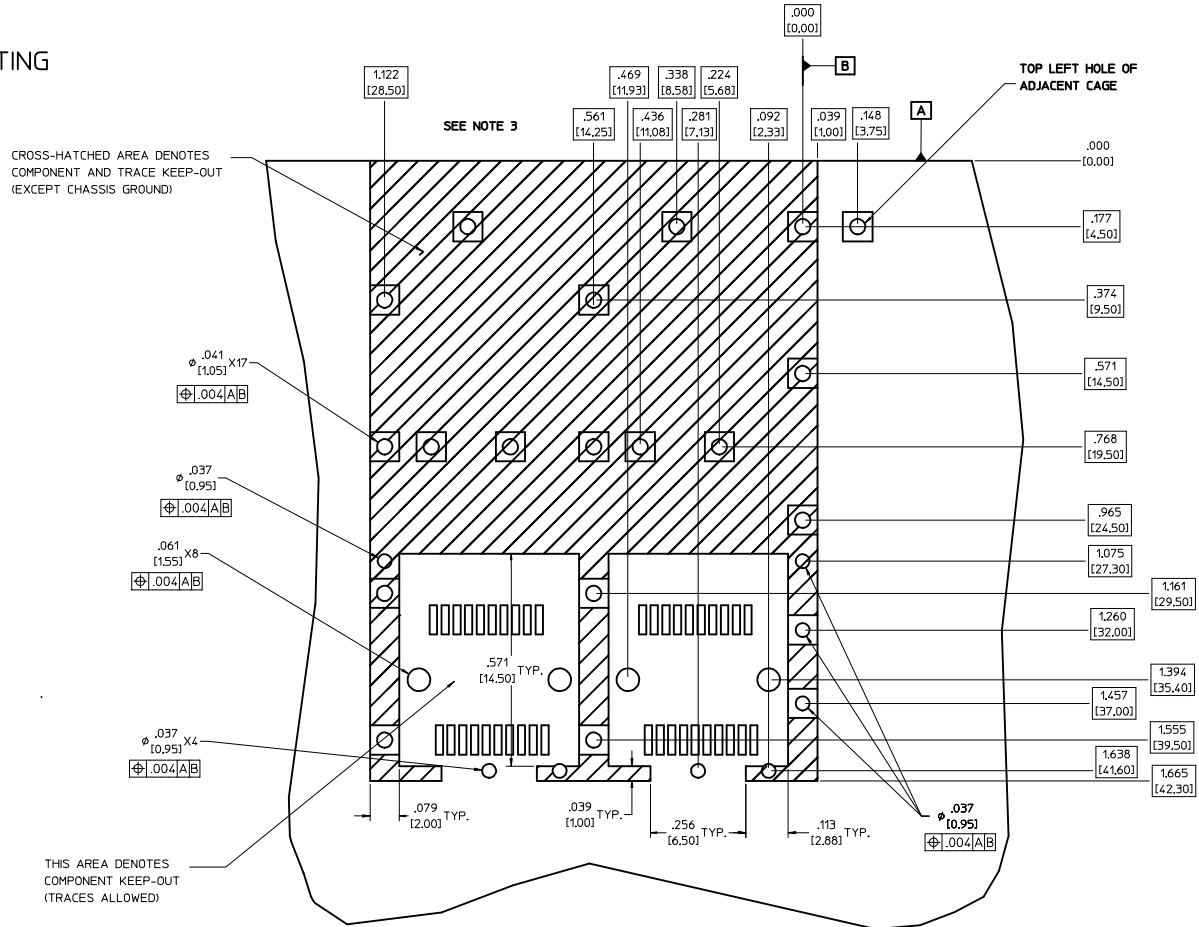
## HOST CONNECTOR DETAIL



- NOTES:**
- PADS AND VIAS GO TO CHASSIS GROUND. (34 PLACES).  
RECOMMENDED PADS TO BE 2mm SQUARE.
  - PLATING OPTIONAL FOR THROUGH HOLES (8 PLACES)
  - RECOMMENDED PLATING INCLUDES HASL, IMMERSION (GOLD, SILVER, OR TIN), AND OSP.
  - HOLE PATTERN REPEATS FOR EACH PORT.  
SPACING BETWEEN PORTS IS 0.561 [14.25]
  - CONNECTOR PAD LAYOUT PER SFP MSA. WILL ACCOMMODATE MOLEX CONNECTOR SERIES 74441 OR EQUIVALENT.

<b>ENTER DESCRIPTION</b> IEC NO. USY2006-0073 DRAWN BY DRANKS IMONSON 2006/01/17 CHECKED BY CHYK BRUSSELL 2006/01/20 APPR. BRUSSELL 2006/01/25 REV DESCRIPTION	<b>QUALITY SYMBOLS</b> ▽=0 ▽=0		<b>GENERAL TOLERANCES (UNLESS SPECIFIED)</b>		<b>DIMENSION STYLE</b> IN/MM		<b>SCALE</b> 6:1		<b>DESIGN UNITS</b> METRIC		THIRD ANGLE PROJECTION	
	4 PLACES ± --- ± --- 3 PLACES ± --- ± .005 2 PLACES ± 0.13 ± .010 1 PLACE ± 0.25 ± ---		mm INCH ANGULAR ± 1 °		DRAWN BY DATE KS IMONSON 2003/09/25		CHECKED BY DATE BRUSSELL 2003/10/27		TITLE 1X2 SFP GANGED CAGE ASSEMBLY, PRESS FIT			
	DRAFT WHERE APPLICABLE MUST REMAIN WITHIN DIMENSIONS		APPROVED BY DATE BRUSSELL 2003/10/27		MATERIAL NO. 747220001		DOCUMENT NO. SD-74722-001		MOLEX MOLEX INCORPORATED SHEET NO. 2 OF 5			

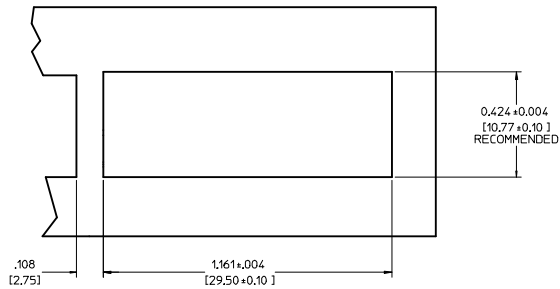
# PCB LAYOUT FOR SINGLE SIDE MOUNTING



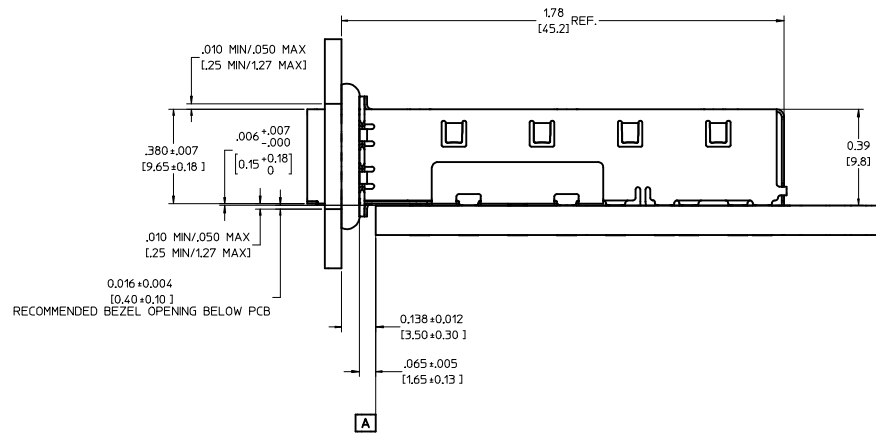
- NOTES:**
- PADS AND VIAS GO TO CHASSIS GROUND. (19 PLACES).  
RECOMMENDED PADS TO BE 2mm SQUARE.
  - PLATING OPTIONAL FOR THROUGH HOLES (6 PLACES)
  - RECOMMENDED PLATING INCLUDES HASL, IMMERSION (GOLD, SILVER, OR TIN), AND OSP.
  - HOLE PATTERN REPEATS FOR EACH PORT.  
SPACING BETWEEN PORTS IS 0.561 [14.25]
  - CONNECTOR PAD LAYOUT PER SFP MSA. WILL ACCOMMODATE MOLEX CONNECTOR SERIES 74441 OR EQUIVALENT.

<b>ENTER DESCRIPTION</b> EC NO: USY2006-0073 DRAWN BY: KSI/MONSON 2006/01/17 CHECKED BY: CHYD/BRUSSELL 2006/01/20 APPROVED BY: APPR/BRUSSELL 2006/01/25 REV:	<b>QUALITY SYMBOLS</b> ▽=0 ▽=0	<b>GENERAL TOLERANCES (UNLESS SPECIFIED):</b>		<b>DIMENSION STYLE</b> IN/MM	<b>SCALE</b> 6:1	<b>DESIGN UNITS</b> METRIC	THIRD ANGLE PROJECTION
		4 PLACES ±.005 ±.005 3 PLACES ±.005 ±.005 2 PLACES ±0.13 ±.010 1 PLACE ±0.25 ±.010 ANGULAR ± 1°	mm INCH	DRAWN BY: KSI/MONSON DATE: 2003/09/25 CHECKED BY: BRUSSELL DATE: 2003/10/27 APPROVED BY: BRUSSELL DATE: 2003/10/27	<b>TITLE</b> 1X2 SFP GANGED CAGE ASSEMBLY, PRESS FIT	<b>MOLEX INCORPORATED</b>	
<b>DRAFT WHERE APPLICABLE MUST REMAIN WITHIN DIMENSIONS</b>		<b>MATERIAL NO.</b> 747220001	<b>DOCUMENT NO.</b> SD-74722-001	<b>SHEET NO.</b> 3 OF 5			
THIS DRAWING CONTAINS INFORMATION THAT IS PROPRIETARY TO MOLEX INCORPORATED AND SHOULD NOT BE USED WITHOUT WRITTEN PERMISSION							

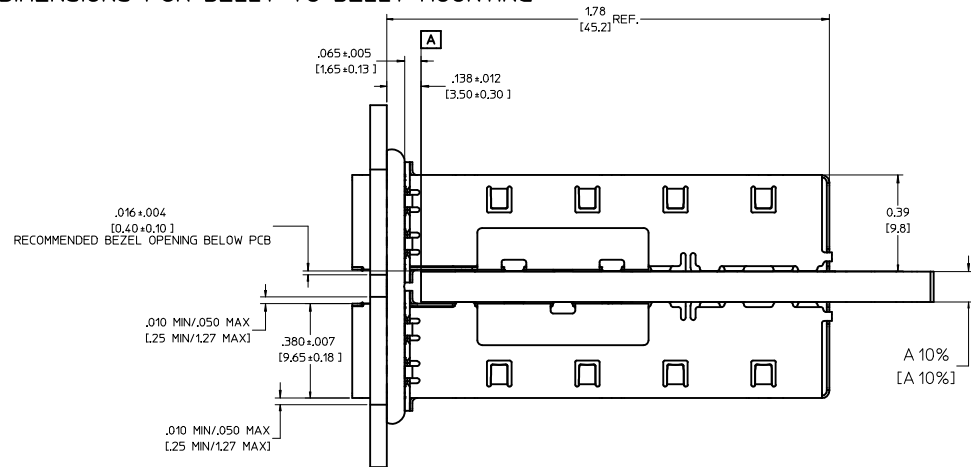
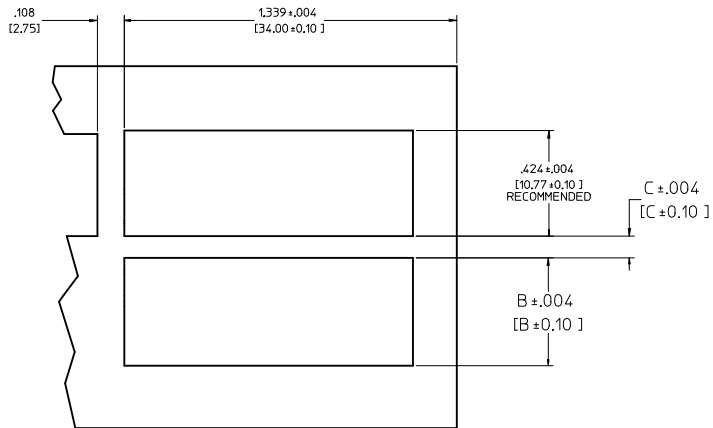




BEZEL AND BOARD POSITION DIMENSIONS FOR SINGLE SIDE MOUNTING



BEZEL AND BOARD POSITION DIMENSIONS FOR BELLY TO BELLY MOUNTING



NOTE: FOR A GIVEN BOARD THICKNESS (A), DIMENSIONS (B) AND (C) ARE DIRECTLY AFFECTED.

USE RECOMMENDED DIMENSIONS AND TOLERANCES TO AID IN DEVELOPING BEZEL OPENING.

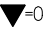
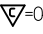

FOR EXAMPLE USING A BOARD THICKNESS OF .125" THE RECOMMENDED VALUES WOULD BE:

- A= .125/3.18 ±10%
- B= .434/11.03 ±.004
- C= .088/2.23 ±.004

<b>ENTER DESCRIPTION</b> IEC NO: USY2006-0073 DRAWN BY: KSI MONSON 2006/01/17 CHECKED BY: CHYKORUSSELL 2006/01/20 APPROVED BY: APPR:BRUSSELL 2006/01/25	QUALITY SYMBOLS	GENERAL TOLERANCES (UNLESS SPECIFIED)	DIMENSION STYLE	SCALE	DESIGN UNITS	THIRD ANGLE PROJECTION															
	$\nabla=0$ $\nabla=0$	<table border="1"> <tr> <th></th> <th>mm</th> <th>INCH</th> </tr> <tr> <td>4 PLACES</td> <td>±---</td> <td>±---</td> </tr> <tr> <td>3 PLACES</td> <td>±---</td> <td>±.005</td> </tr> <tr> <td>2 PLACES</td> <td>±0.13</td> <td>±.010</td> </tr> <tr> <td>1 PLACE</td> <td>±0.25</td> <td>±---</td> </tr> </table>		mm	INCH	4 PLACES	±---	±---	3 PLACES	±---	±.005	2 PLACES	±0.13	±.010	1 PLACE	±0.25	±---	IN/MM	4:1	METRIC	
		mm	INCH																		
	4 PLACES	±---	±---																		
3 PLACES	±---	±.005																			
2 PLACES	±0.13	±.010																			
1 PLACE	±0.25	±---																			
DRAFT WHERE APPLICABLE MUST REMAIN WITHIN DIMENSIONS	DRAWN BY: KSI MONSON 2003/09/25 CHECKED BY: BRUSSELL 2003/10/27 APPROVED BY: BRUSSELL 2003/10/27	MATERIAL NO: 747220001 DOCUMENT NO: SD-74722-001	TITLE: 1X2 SFP GANGED CAGE ASSEMBLY, PRESS FIT	MOLEX INCORPORATED	SHEET NO: 4 OF 5																
THIS DRAWING CONTAINS INFORMATION THAT IS PROPRIETARY TO MOLEX INCORPORATED AND SHOULD NOT BE USED WITHOUT WRITTEN PERMISSION																					

20 19 18 17 16 15 14 13 12 11 10 9 8 7 6 5 4 3 2 1

DATE	REV	CHANGES	COMMENTS
10/27/2003	A	INITIAL RELEASE	N/A
10/06/2005	B	ADDED PCB AND BEZEL LAYOUT	N/A

<b>ENTER DESCRIPTION</b> IEC NO: USY2006-0073 DRAWN BY: DRANKS IMONSON 2006/01/17 CHECKED BY: CHYD BRUSSELL 2006/01/20 APPR: BRUSSELL 2006/01/25	<b>QUALITY SYMBOLS</b>  = 0  = 0.05	<b>GENERAL TOLERANCES (UNLESS SPECIFIED)</b>		<b>DIMENSION STYLE</b> IN/MM	<b>SCALE</b> 1:1	<b>DESIGN UNITS</b> METRIC	 <b>THIRD ANGLE PROJECTION</b>	
		4 PLACES ± --- ± --- 3 PLACES ± --- ± .005 2 PLACES ± 0.13 ± .010 1 PLACE ± 0.25 ± --- ANGULAR ± 1°	DRAWN BY: DATE KS IMONSON 2003/09/25 CHECKED BY: DATE BRUSSELL 2003/10/27 APPROVED BY: DATE BRUSSELL 2003/10/27	<b>TITLE</b> 1X2 SFP GANGED CAGE ASSEMBLY, PRESS FIT		<b>MATERIAL NO.</b> 747220001		<b>DOCUMENT NO.</b> SD-74722-001
<b>DRAFT WHERE APPLICABLE MUST REMAIN WITHIN DIMENSIONS</b>		<b>SIZE</b> D		<b>THIS DRAWING CONTAINS INFORMATION THAT IS PROPRIETARY TO MOLEX INCORPORATED AND SHOULD NOT BE USED WITHOUT WRITTEN PERMISSION</b>				<b>SHEET NO.</b> 5 OF 5

19 18 17 16 15 14 13 12 11 10 9 8 7 6 5 4 3 2 1