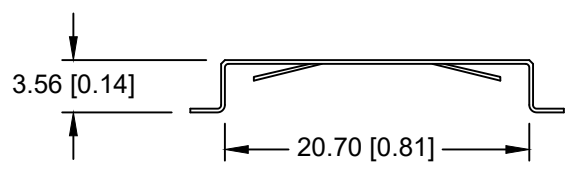
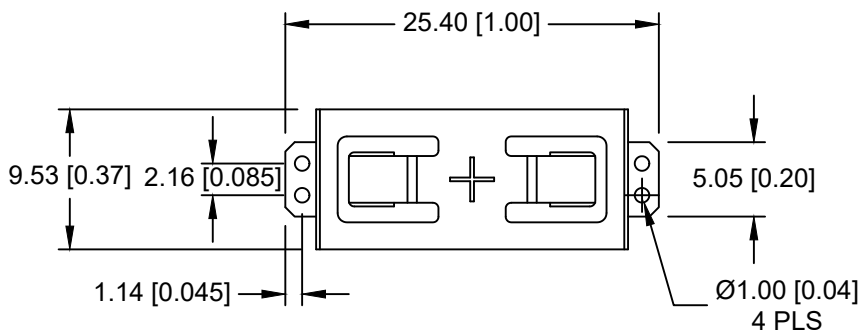
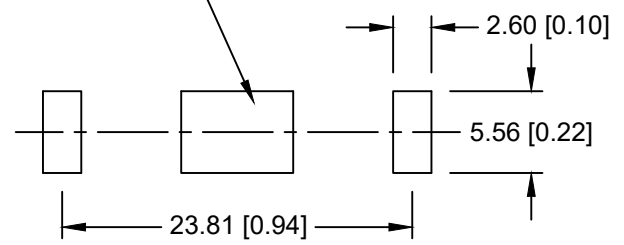


| Date | SYM | REVISION RECORD | AUTH | DR. | CK. |
|------|-----|-----------------|------|-----|-----|
|      |     |                 |      |     |     |
|      |     |                 |      |     |     |
|      |     |                 |      |     |     |
|      |     |                 |      |     |     |
|      |     |                 |      |     |     |



NEGATIVE CONTACT PAD  
NICKEL OR GOLD PLATED



PCB LAYOUT

NOTES:

- \* Material- 0.25mm Phosphor Bronze, Nickel plated.
- \* Vibration test: 10-50-10 hz swept in 60 seconds  
x,y,z direction: 1 hour each direction
- \* Result: no dislodgement of the cell or damage  
no discontinuity over 10 micro-seconds
- \* Shock test: half sine wave acceleration 150g.  
6 ms 1 shock pulses each direction per axis
- \* Result: no evidence of physical damage
- \* Drop Test: Mounted on board and dropped 1 time per direction  
from 1m high to wooden floor
- \* Result: No dislodgement of the cell, No damage to the holders
- \* ROHS COMPLIANT

Weight: 0.53g

|           |  |
|-----------|--|
| CELL SIZE | RETAINS BATTERY NUMBERS  |
| 20mm      | BR2032, CR2032, DL2032, LIR2032, BR2025, CR2025, DL2025, LIR2025 |

|                                |   |                                 |                                   |
|--------------------------------|---|---------------------------------|-----------------------------------|
| Tolerance<br>(Except as noted) | <b>Memory Protection Devices, Inc</b><br>200 Broad Hollow Road, Farmingdale, New York 11735 |                                 |                                   |
|                                | decimal<br>±.5 (.020)   | Scale                           | Drawn By B.S.<br>Approved By T.B. |
| Fractional<br>± .8 (.030)      | Title<br>CR2032 BATTERY STRAP, WITH FLOW HOLES  |                                 |                                   |
| Angular<br>± 3°                | Date<br>06/05/21  | Drawing Number<br>BC-2003-TR-FH |                                   |