



**ANATECH ELECTRONICS INC**  
RF & Microwave Filters & Products

**915 MHz / 2435 MHz  
Cavity Duplexer**

**Part Number: AD915-2435D469**

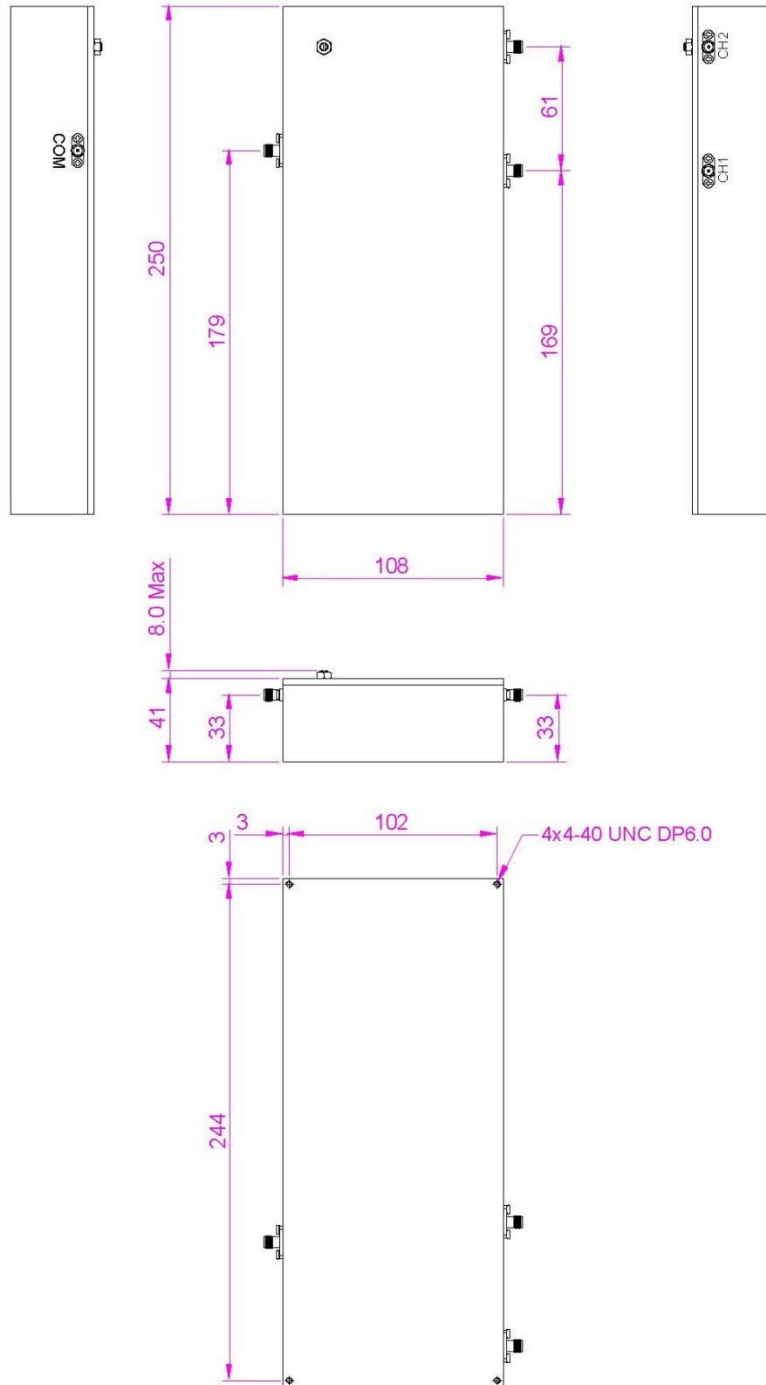


**ELECTRICAL SPECIFICATION**

	CH 1	CH 2
<b>Frequency Range</b>	902 ~ 928 MHz	2400 ~ 2470 MHz
<b>Insertion Loss</b>	1.5 dB Max	
<b>Ripple</b>	0.5 dB Max Peak to Peak	
<b>VSWR</b>	1.5:1 Max	
<b>Rejection</b>	>40dB @ 0~880 MHz >50dB @ 890 MHz >30dB @ 932 MHz >50dB @ 960~5000 MHz	>40dB @ 0~2370 MHz >40dB @ 2500~5000 MHz
<b>Power Handling</b>	2W CW Max	
<b>In/Out Impedance</b>	50 Ohms Nominal	
<b>MECHANICAL</b>		
<b>Dimension</b>	108 x 250 x 41 mm	
<b>RF Connector</b>	SMA (F)	
<b>Finish</b>	Black Color Epoxy Coating	
<b>ENVIRONMENTAL</b>		
<b>Operating Temperature</b>	-10 to +70°C	

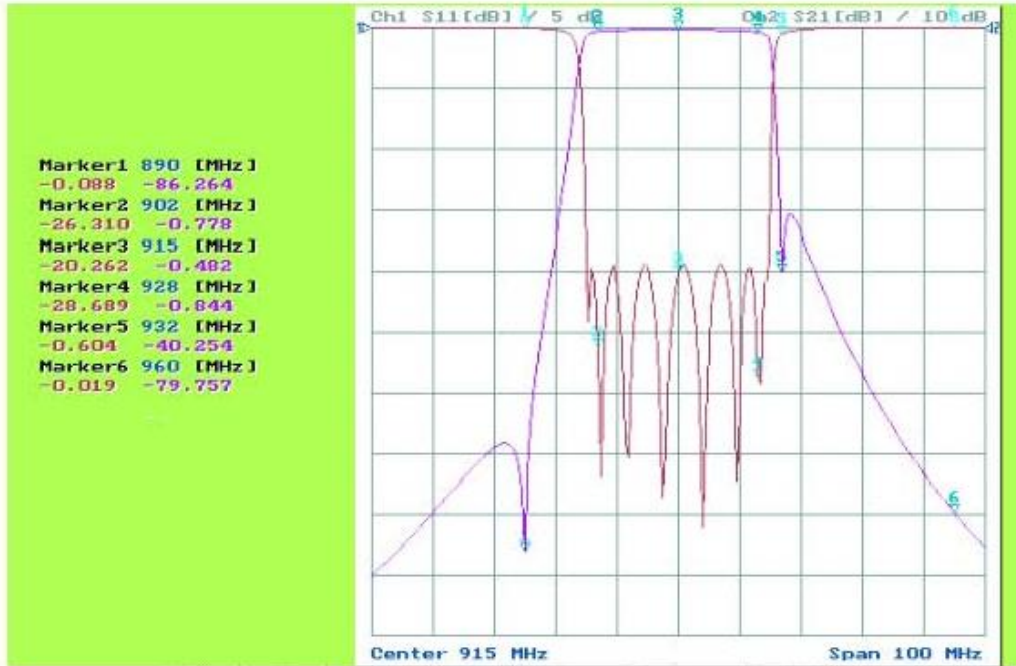


**Outline Drawing:**

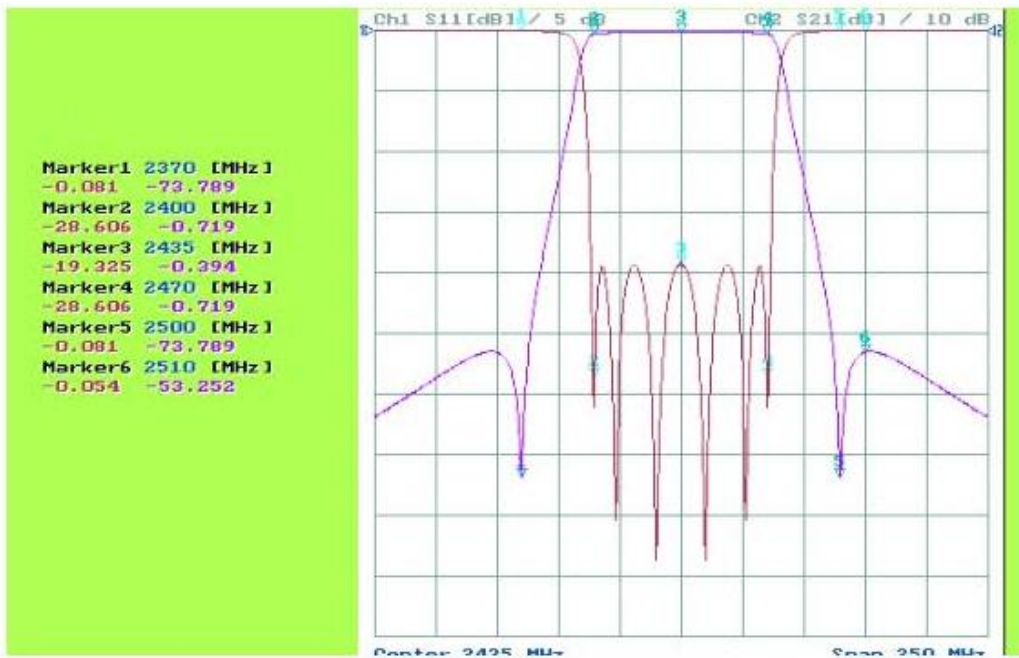




**Response Plot:**



CH1 : Return Loss and Insertion Loss, Ripple and Rejection



CH2 : Return Loss and Insertion Loss, Ripple and Rejection