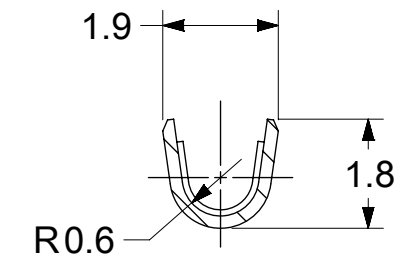
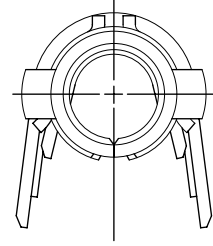
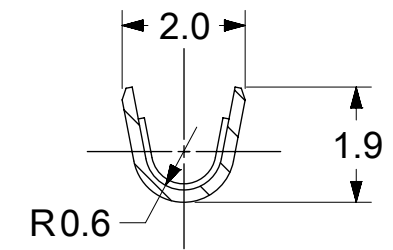


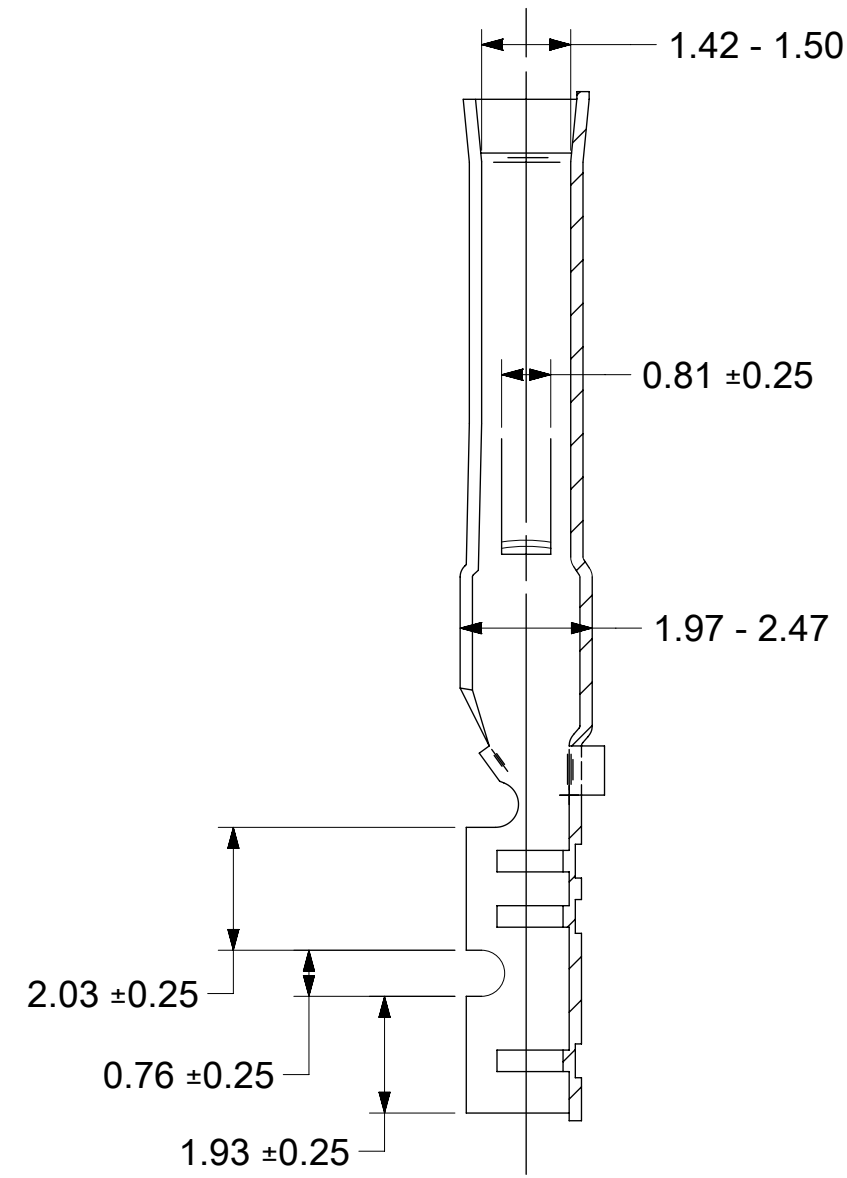
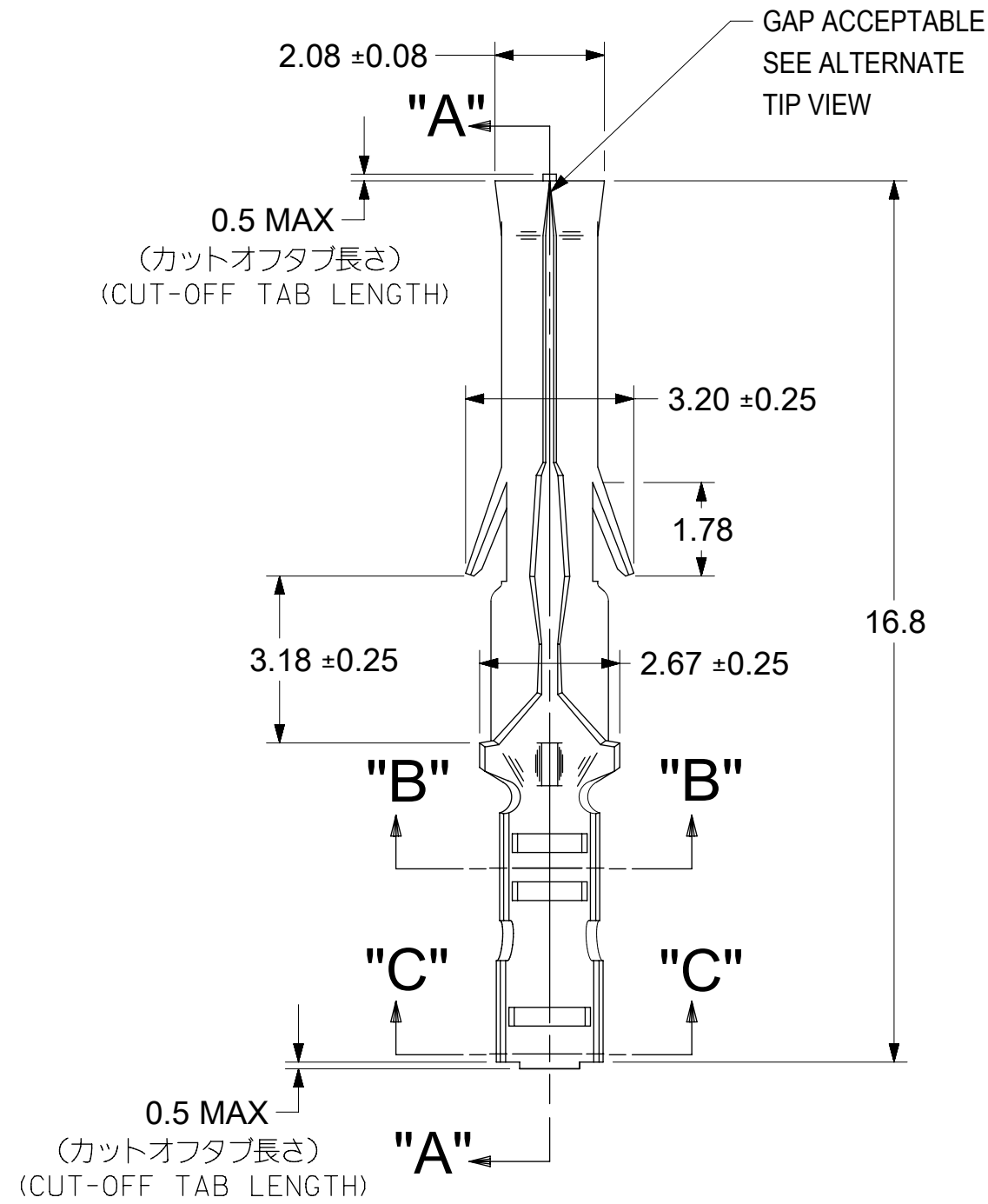
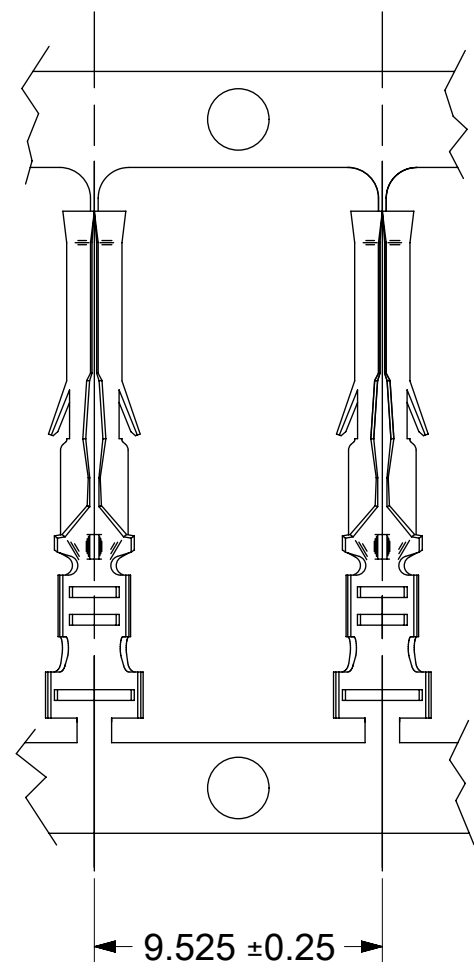
ALTERNATE TIP GEOMETRY
SEE NOTE 7



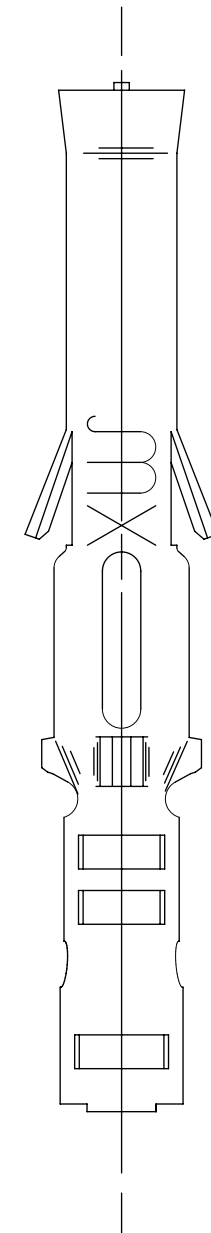
SECT. "B-B"



SECT. "C-C"



SECT. "A-A"



NOTES:

1. MATERIAL: BRASS
2. FINISHES: SEE CHART
3. PRODUCT SPECIFICATION: PS-02-06
4. PACKAGE INFORMATION: 18550000-PK
5. TERMINAL FOR USE WITH (1.57)/.062 DIA. SERIES HOUSINGS AND WILL ACCEPT 22 THRU 28 AWG WIRE WITH 1.1-1.5 INSULATION DIAMETER.
6. PARTS CONFORM TO CLASS B REQUIREMENTS OF COSMETIC SPECIFICATION PS-45499-002.
7. TIP GEOMETRY IS TOOL DEPENDENT. EITHER GEOMETRY IS ACCEPTABLE.

一般公差: ±0.4
GENERAL TOLERANCES: ±0.4

銅 (0.5 μm MIN.) 下地 錫 (0.9 μm MIN.) TIN (0.9 μm MIN.) OVER COPPER (0.5 μm MIN.)	39-00-0338	1855T	連鎖端子 CHAIN
メッキ PLATING	EDP.NO.	ENG.NO.	形状 FORM

THIS DRAWING CONTAINS INFORMATION THAT IS PROPRIETARY TO MOLEX ELECTRONIC TECHNOLOGIES, LLC AND SHOULD NOT BE USED WITHOUT WRITTEN PERMISSION

DIMENSION UNITS mm	SCALE 8:1	CURRENT REV DESC: OBSOLETE PART NUMBER AS PER PCN#509988	molex		
GENERAL TOLERANCES (UNLESS SPECIFIED)	ANGULAR TOL ± °	EC NO: 704776			
4 PLACES ±	3 PLACES ±	2 PLACES ±	PRODUCT CUSTOMER DRAWING		
1 PLACE ±	0 PLACES ±	DRAFT WHERE APPLICABLE MUST REMAIN WITHIN DIMENSIONS	INITIAL REVISION:		
材料 MATERIAL 黄銅 BRASS 0.2 t	仕上げ FINISH	適用電線範囲 WIRE RANGE AWG#22-#28	DOCUMENT NUMBER 18550001-SD		
被覆外径 INS. RANGE φ 1.1~1.5	DRAWING C-SIZE	SERIES 1855	MATERIAL NUMBER SEE TABLE	CUSTOMER GENERAL MARKET	DOC TYPE PSD
			DOC PART 000	REVISION A1	SHEET NUMBER 1 OF 1

DOCUMENT STATUS	P1	RELEASE DATE	2022/05/24	10:34:30
-----------------	----	--------------	------------	----------