

**Driver LCO 20W 350/500/700mA pc C ADV UNV**

OUTDOOR advanced series



**Product description**

- \_ Constant current LED driver
- \_ Only for US applications
- \_ Dimmable via leading edge and trailing edge phase dimmers
- \_ Dimming range 10 to 100 %
- \_ Class 2 power supply
- \_ FCC Part 15
- \_ Dry and damp location
- \_ Max. output power 20 W
- \_ Up to 86 % efficiency
- \_ 5 years guarantee

**Housing properties**

- \_ Casing: polycarbonate, black
- \_ Potted style
- \_ Type of protection IP66

**Functions**

- \_ Over voltage protection
- \_ Short-circuit protection
- \_ No-load protection

**Typical applications**

- \_ For lantern, landscape, decorative

**Website**

<http://www.tridonic.us/28002251>



Spotlights



Downlights



Linear



Area



Floor | Wall



Free-standing



Street

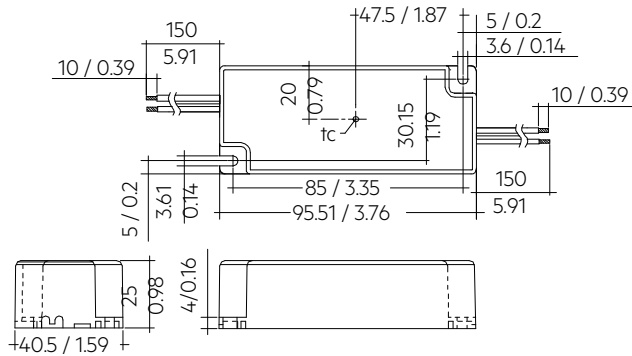


Decorative

## Driver LCO 20W 350/500/700mA pc C ADV UNV

OUTDOOR advanced series

The complete data sheet for this product is available in the Downloads section.



Dimensions in mm / inch

## Approval marks



## Standards

UL 8750, UL 1310, FCC PART 15, ANSI C62.41, ANSI C63.4, NEMA 4, CSA C22.2