



ANATECH ELECTRONICS INC
RF & Microwave Filters & Products

925-960 MHz / 1805-1910 MHz Cavity Duplexer

Part Number: AD942-1857D1034

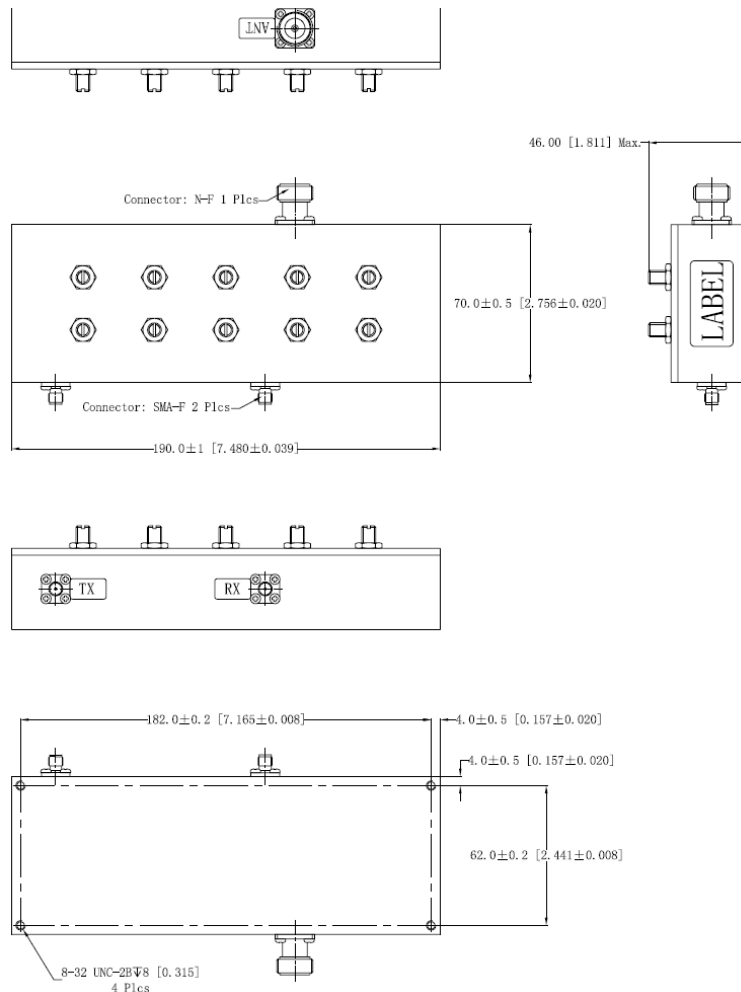


Characteristics	Band 1	Band 2
Passband:	925-960 MHz	1805-1910 MHz
Bandwidth:	35 MHz	105 MHz
Passband Return Loss:	16 dB	16 dB
Passband Insertion Loss:	1 dB	1 dB
Passband Ripple:	0.2 dB	0.2 dB
Input / Output Impedance:	50 Ohms	50 Ohms
Isolation:	50 dB	50 dB
Power Handling:	50 Watts	50 Watts

Mechanical	
Mounting Method:	8-32 Threaded Mounting Holes
Connector Type:	SMA & N-Type (F)
Dimensions:	190 70x 46mm

Environmental	
Operating Temperature:	-40 to +70 deg.C
Storage Temperature:	-50 to +90 deg.C

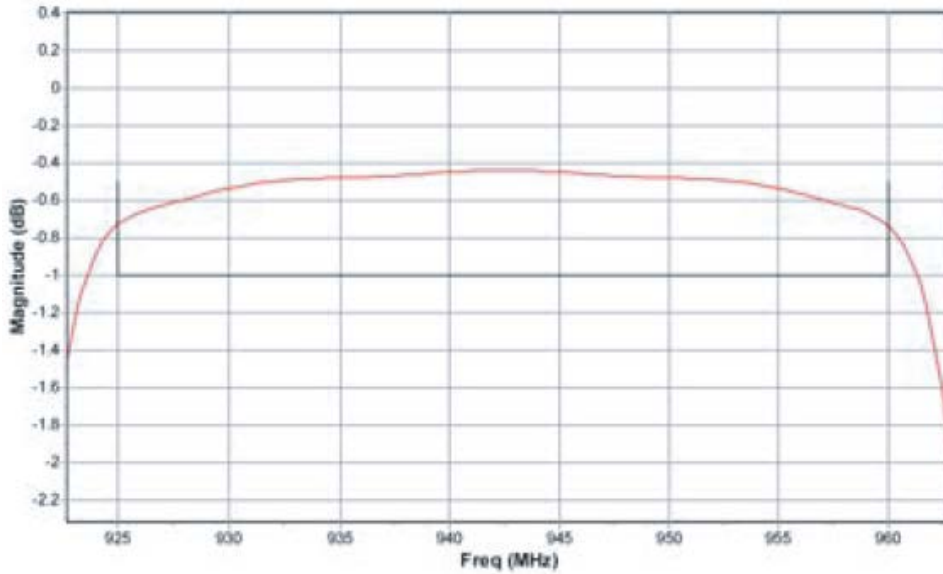
Outline Drawing:



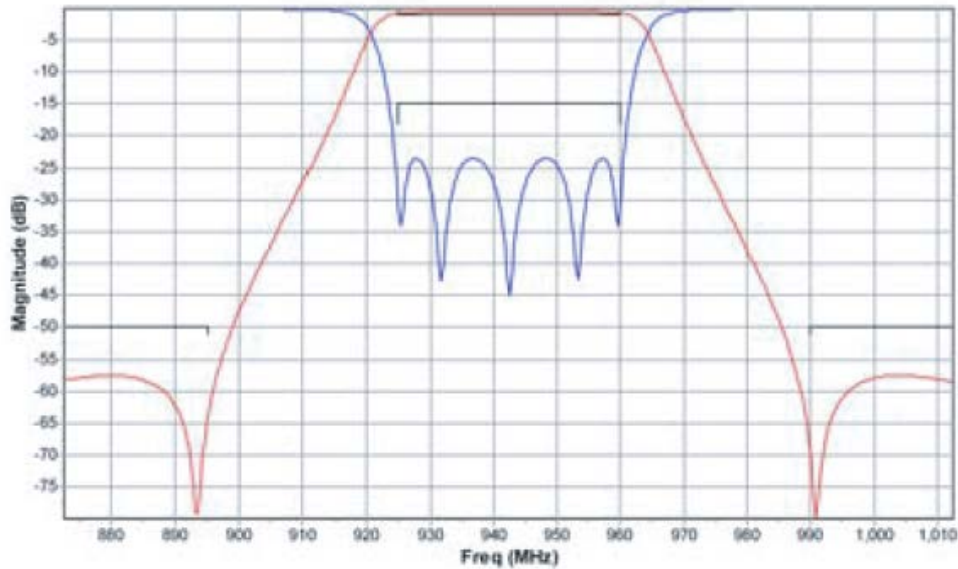


Response Plot:

RX Insertion Loss:



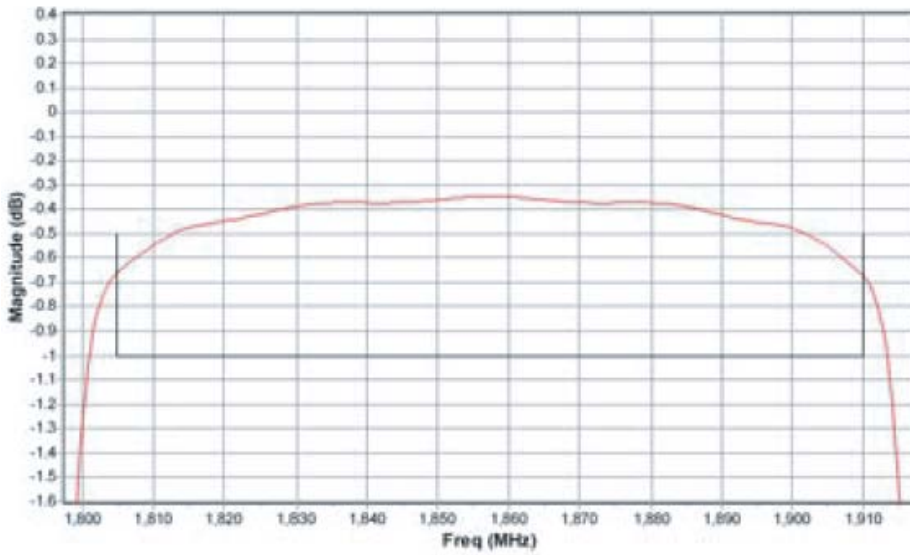
RX Rejection:





Response Plot:

Tx Insertion Loss:



TX Rejection

