

4

3

2

1

THIS DRAWING IS UNPUBLISHED.

RELEASED FOR PUBLICATION

20

© COPYRIGHT 20

BY -

ALL RIGHTS RESERVED.

REVISIONS

P	LTR	DESCRIPTION	DATE	DWN	APVD
	A	RELEASE PER ECO-20-003857	16MAR2020	DFS	DFS

Ø25.4±1.00

36.70±0.50

19.45±0.50

SECTION B-B

NOTES:

1. MATERIALS:

ADAPTER HOUSING:

GENERIC TYPE = NYLON GF30%

COLOR = BLACK

TERMINALS:

BASE MAT'L = COPPER ALLOY

MATING INTERFACE = SILVER OVER NICKEL

FLANGE SEAL:

GENERIC TYPE = SILICONE RUBBER

COLOR = YELLOW

2. REFERENCE TO DRAWING 2295114 FOR CONNECTOR INTERFACE DIMENSIONS.

3. OPERATING TEMPERATURE = -40°C TO +125°C

△4. THIS PART MATES WITH 2-WAY PLUG, P/N 2292906-X. SEE SHEET 2 FOR KEYING ARRANGEMENTS.

△5. THIS PART MUST USE MOUNTING CLIP, P/N 2325098-X (SOLD SEPARATELY) FOR PROPER SEALING AND RETENTION WHEN ASSEMBLED TO A PANEL.

6. ADAPTER NOT SEALED IN THE UNMATED STATE.


7. HIGH PRESSURE SPRAY FROM CLIP SIDE ONLY.

△8. NOT RELEASED FOR PRODUCTION

FLANGE SEAL

HOUSING

ISOMETRIC VIEWS SHOWN FOR REFERENCE ONLY

THIS DRAWING IS A CONTROLLED DOCUMENT.		DWN RAGHAV SATHISH 28MAR2018	 TE Connectivity	
DIMENSIONS: mm		CHK D.F. STACK 28MAR2018		
TOLERANCES UNLESS OTHERWISE SPECIFIED:		APVD D. KLEIN 13MAR2020	NAME ADAPTER, 2POS, 1.2X0.6, PIN HSG ASSY enetSEAL+	
0 PLC ±-		PRODUCT SPEC 108-151045	SIZE A3	
1 PLC ±-		APPLICATION SPEC 114-151045	CAGE CODE -	
2 PLC ±-		WEIGHT -	DRAWING NO C-2325106	
3 PLC ±-		CUSTOMER DRAWING	RESTRICTED TO -	
4 PLC ±-			SCALE 2:1	
ANGLES ±2°		SHEET 1 OF 5		REV A
FINISH -				
MATERIAL SEE NOTE 1				

1470-19 (3/13)

THIS DRAWING IS UNPUBLISHED.

RELEASED FOR PUBLICATION

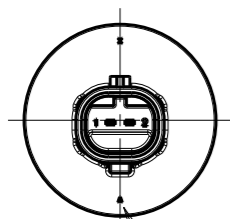
20

© COPYRIGHT 20 BY -

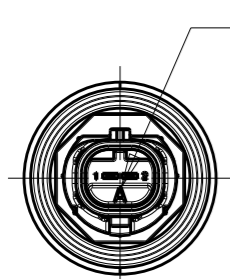
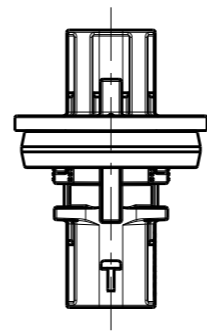
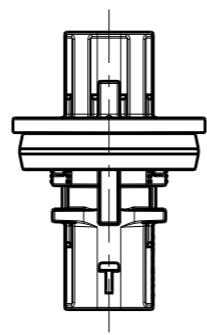
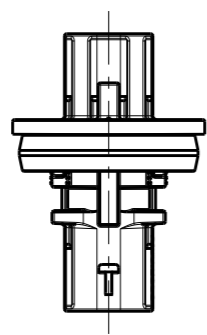
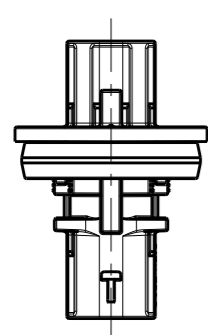
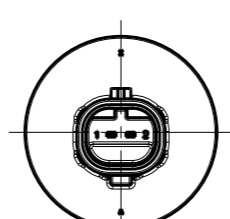
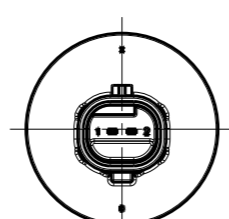
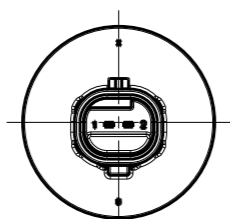
ALL RIGHTS RESERVED.

REVISIONS

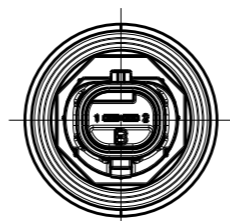
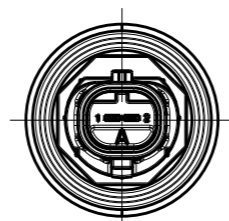
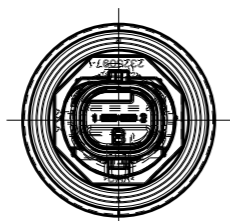
P	LTR	DESCRIPTION	DATE	DWN	APVD
-	-	SEE SHEET 1	-	-	-



KEY ID
FLANGE SIDE



KEY ID
CLIP SIDE



2325106-1
(KEY A-A)

2325106-2
(KEY B-B)

2325106-4
(KEY A-B)

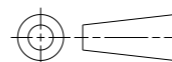
2325106-8
(KEY B-A)



THIS DRAWING IS A CONTROLLED DOCUMENT.

DIMENSIONS:

mm



TOLERANCES UNLESS OTHERWISE SPECIFIED:

- 0 PLC ±-
- 1 PLC ±-
- 2 PLC ±-
- 3 PLC ±-
- 4 PLC ±-
- ANGLES ±2°
- FINISH -

MATERIAL
SEE NOTE 1

DWN 28MAR2018

RAGHAV SATHISH

CHK 28MAR2018

D.F. STACK

APVD 13MAR2020

D. KLEIN

PRODUCT SPEC

108-151045

APPLICATION SPEC

114-151045

WEIGHT

-

CUSTOMER DRAWING



TE Connectivity

NAME
ADAPTER, 2POS, 1.2X0.6, PIN HSG ASSY
enetSEAL+

SIZE CAGE CODE DRAWING NO RESTRICTED TO

A3 - C-2325106 -

SCALE 2:1 SHEET 2 OF 5 REV A

THIS DRAWING IS UNPUBLISHED.

RELEASED FOR PUBLICATION 20


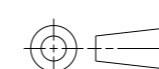
© COPYRIGHT 20 BY - ALL RIGHTS RESERVED.

REVISIONS

P	LTR	DESCRIPTION	DATE	DWN	APVD
-		SEE SHEET 1	-	-	-

ADDITIONAL NOTES REGARDING PANEL/ENCLOSURE FITMENT:

- 10. RECOMMENDED KEEP OUT REGION TO ENSURE PROPER ASSEMBLY TO PANEL/ENCLOSURE.
- 11. RECOMMENDED KEEP OUT REGION TO ENSURE PROPER CLIP ASSEMBLY.
- 12. SURFACE FINISH REQUIREMENT APPLIES WITHIN KEEPOUT REGION.
- 13. THICKNESS BETWEEN KEEP OUT REGIONS MUST MEET THICKNESS REQUIREMENT FOR SPECIFIC MOUNTING CLIP TO BE USED PER TE CUSTOMER DRAWING 2325098.
- 14. SEALING SURFACE, NO BURRS, SCRATCHES OR TOOL MARKS ALLOWED.
- 15. REMOVE SHARP EDGES. R0.5MM MAX.
- 16. X BASIC AND Y BASIC TO BE DEFINED BY THE CUSTOMER.

THIS DRAWING IS A CONTROLLED DOCUMENT.		DWN 28MAR2018 RAGHAV SATHISH	 TE Connectivity	
DIMENSIONS: mm		CHK 28MAR2018 D.F. STACK		
		APVD 13MAR2020 D. KLEIN	NAME ADAPTER, 2POS, 1.2X0.6, PIN HSG ASSY enetSEAL+	
TOLERANCES UNLESS OTHERWISE SPECIFIED:		PRODUCT SPEC 108-151045	RESTRICTED TO	
0 PLC ±-		APPLICATION SPEC 114-151045	SIZE A3	CAGE CODE -
1 PLC ±-		WEIGHT -	DRAWING NO C-2325106	SCALE 2:1
2 PLC ±-		CUSTOMER DRAWING	SHEET 3 OF 5	REV A
3 PLC ±-				
4 PLC ±-				
ANGLES ±2°				
FINISH -				
MATERIAL SEE NOTE 1				

4

3

2

1

THIS DRAWING IS UNPUBLISHED.

RELEASED FOR PUBLICATION

20

© COPYRIGHT 20 BY -

ALL RIGHTS RESERVED.

REVISIONS

P	LTR	DESCRIPTION	DATE	DWN	APVD
-	-	SEE SHEET 1	-	-	-

RECOMMENDED ENCLOSURE GEOMETRY FOR ASSEMBLIES
2325106-X

14 12 10
 $\varnothing 25.90 \pm 0.10$
 $\varnothing 0.2$ A B C
 15 ALL AROUND
 \varnothing OF B
 A
 14 12 0.8
 \varnothing OF C
 13 (THICKNESS)

2X
 $\varnothing 25.40$
 8.00
 17.50
 $\varnothing 15.50 \pm 0.10$
 0.2 A B C 11
 \varnothing OF B
 \varnothing OF C

2X
 $R0.30 \pm 0.05$
 2X
 $R0.25 \pm 0.05$
 $\varnothing 15.50 \pm 0.10$
 2X
 $R0.50 \pm 0.05$
 6.80 ± 0.05
 2X
 5.75 ± 0.05
 2.90 ± 0.10
 B
 \varnothing OF B
 \varnothing OF C
 A
 SCALE 5:2

THIS DRAWING IS A CONTROLLED DOCUMENT.

DWN 28MAR2018

RAGHAV SATHISH

CHK 28MAR2018

D.F. STACK

APVD 13MAR2020

D. KLEIN

PRODUCT SPEC

108-151045

APPLICATION SPEC

114-151045

WEIGHT

-

CUSTOMER DRAWING

TE Connectivity

NAME
ADAPTER, 2POS, 1.2X0.6, PIN HSG ASSY
enetSEAL+

SIZE CAGE CODE DRAWING NO RESTRICTED TO

A3 - C-2325106

SCALE 2:1 SHEET 4 OF 5 REV A

DIMENSIONS:

mm

TOLERANCES UNLESS OTHERWISE SPECIFIED:

0 PLC	±-
1 PLC	±-
2 PLC	±-
3 PLC	±-
4 PLC	±-
ANGLES	±2°

MATERIAL
SEE NOTE 1

FINISH

-

1470-19 (3/13)

THIS DRAWING IS UNPUBLISHED.

RELEASED FOR PUBLICATION

20

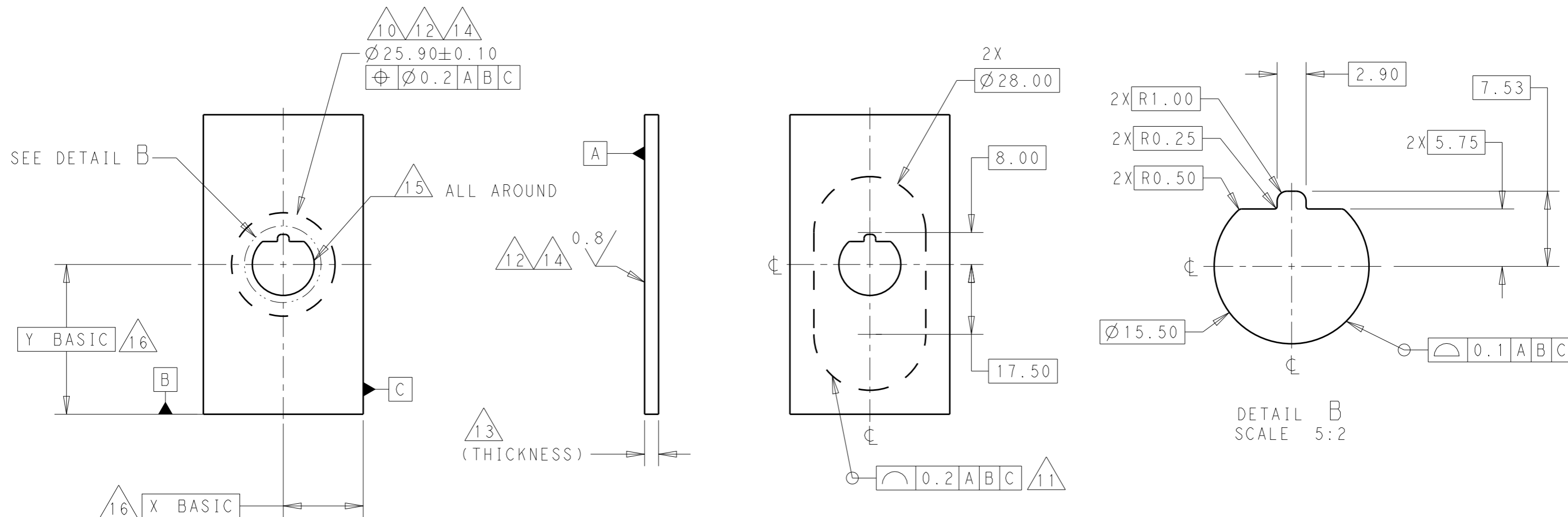
© COPYRIGHT 20 BY -


ALL RIGHTS RESERVED.

REVISIONS

P	LTR	DESCRIPTION	DATE	DWN	APVD
-	-	SEE SHEET 1	-	-	-

ALTERNATE RECOMMENDED ENCLOSURE GEOMETRY FOR ASSEMBLIES
2325106-X



THIS DRAWING IS A CONTROLLED DOCUMENT.		DWN 28MAR2018 RAGHAV SATHISH	 TE Connectivity	
DIMENSIONS: mm		CHK 28MAR2018 D.F. STACK		
TOLERANCES UNLESS OTHERWISE SPECIFIED:		APVD 13MAR2020 D. KLEIN	NAME ADAPTER, 2POS, 1.2X0.6, PIN HSG ASSY enetSEAL+	
0 PLC ±-		PRODUCT SPEC 108-151045	SIZE A3	
1 PLC ±-		APPLICATION SPEC 114-151045	CAGE CODE -	DRAWING NO C-2325106
2 PLC ±-		WEIGHT -	RESTRICTED TO -	
3 PLC ±-		CUSTOMER DRAWING	SCALE 2:1	SHEET 5 OF 5
4 PLC ±-			REV A	
ANGLES ±2°				
FINISH -				
MATERIAL SEE NOTE 1				