



Adafruit Ultimate GPS featherwing

Created by lady ada



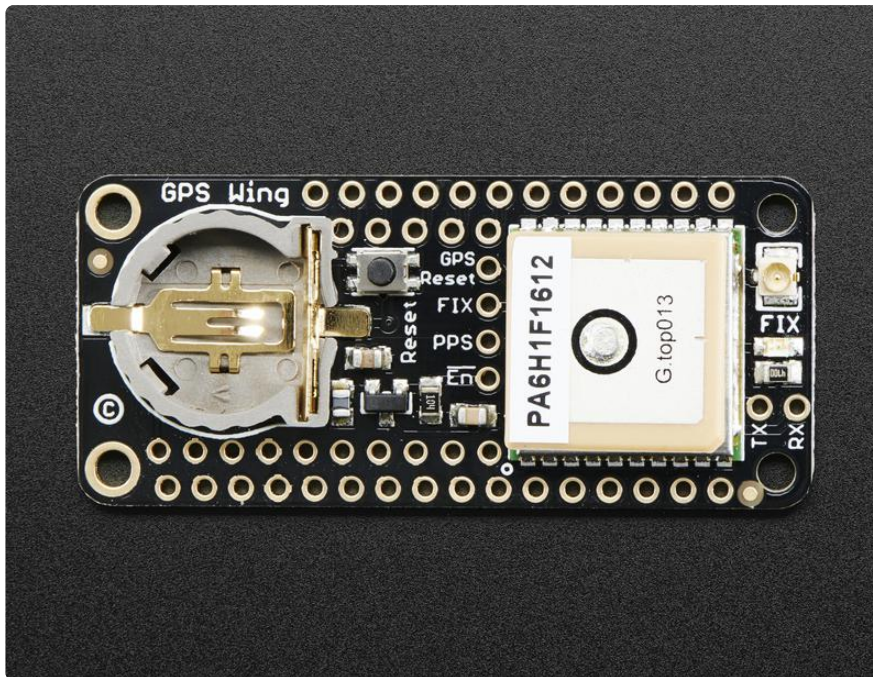
<https://learn.adafruit.com/adafruit-ultimate-gps-featherwing>

Last updated on 2022-03-30 05:54:50 PM EDT

Table of Contents

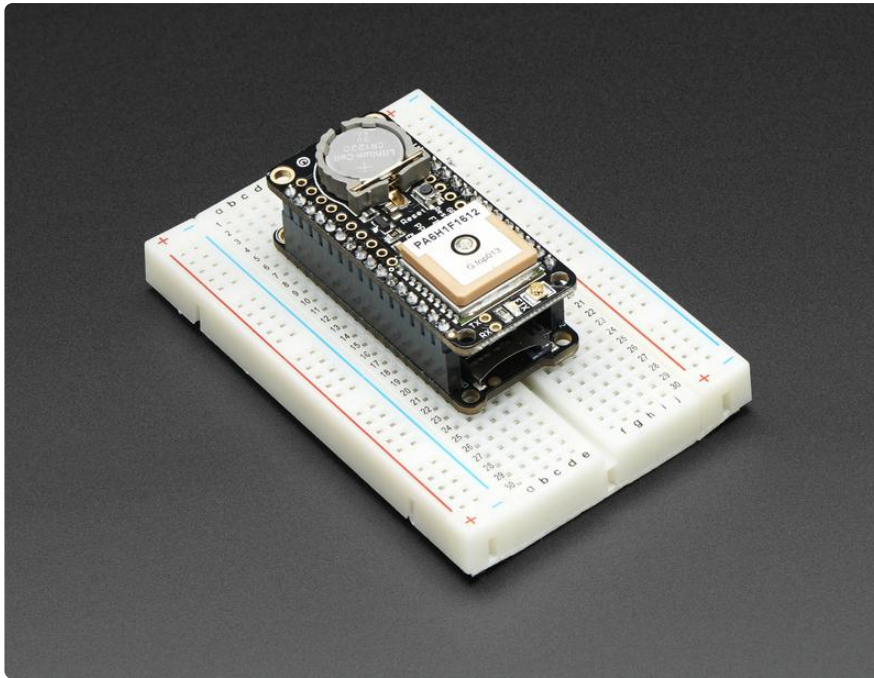
Overview	3
Pinouts	6
• Power Pins	7
• Serial Data Pins	7
• GPS Breakouts	8
• Coin Battery	9
• Reset Button	10
• Antennas	10
Basic RX-TX Test	11
Arduino Library	14
• Parsed Data	15
CircuitPython Library	16
• Usage	17
• Datalogging Example	22
• Install SD Card Library	22
• Enable Internal Filesystem Writes	23
• Datalogging Example Code	24
Battery Backup	27
Antenna Options	28
Resources	29
• Datasheets	29
• More reading:	30
• Adafruit GPS Library for Arduino	30
• EPO files for AGPS use	30
F.A.Q.	30
Downloads	33
• Datasheets & Files	33
• Schematic	34
• Fabrication Print	34

Overview

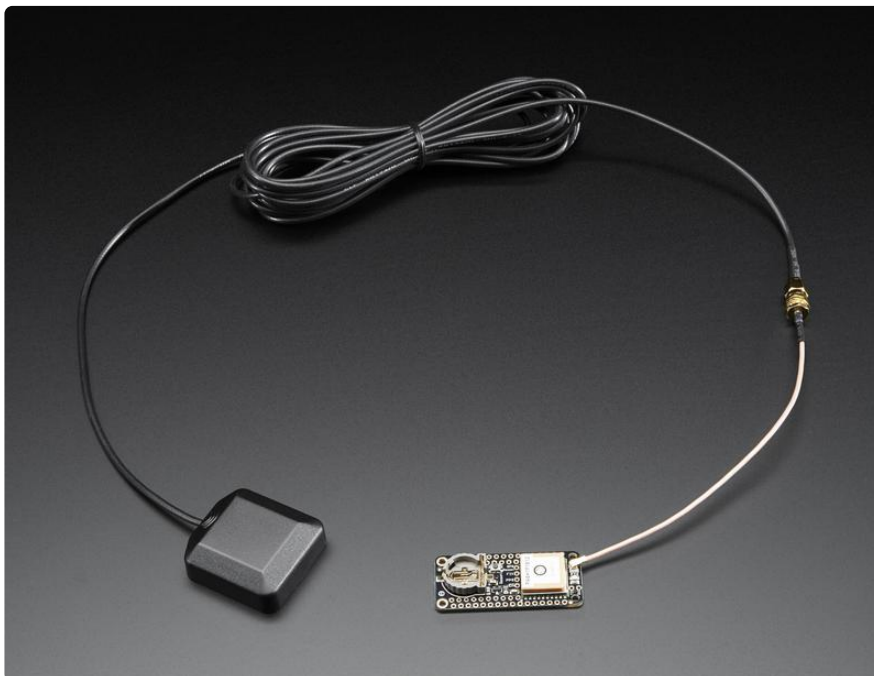


Give your Feather a sense of place, with an Ultimate GPS FeatherWing. This FeatherWing plugs right into your Feather board and gives it a precise, sensitive, and low power GPS module for location identification anywhere in the world. As a bonus, the GPS can also keep track of time once it is synced with the satellites.

- -165 dBm sensitivity, 10 Hz updates, 66 channels
- 20mA current draw
- RTC with coin battery backup
- Built-in datalogging
- PPS (pulse per second) output on fix
- Internal patch antenna + u.FL connector for external active antenna
- Fix status LED



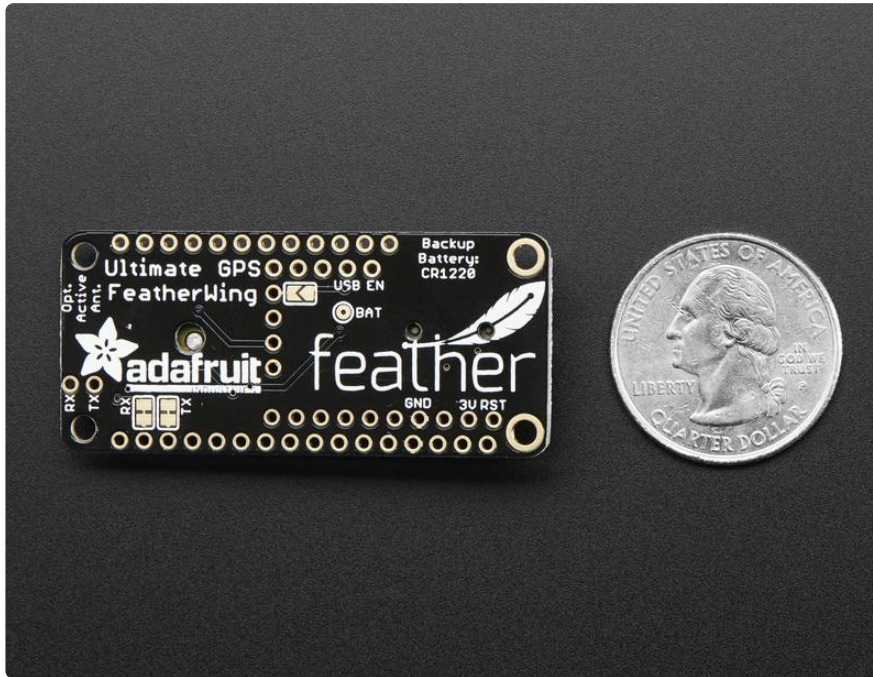
The Wing is built around the MTK3339 chipset, a no-nonsense, high-quality GPS module that can track up to 22 satellites on 66 channels, has an excellent high-sensitivity receiver (-165 dB tracking!), and a built in antenna. It can do up to 10 location updates a second for high speed, high sensitivity logging or tracking. Power usage is incredibly low, only 20 mA during navigation.



The MTK3339-based module has external antenna functionality. The module has a standard ceramic patch antenna that gives it -165 dB sensitivity, but when you want to have a bigger antenna, you can snap on any 3V active GPS antenna via the uFL connector. The module will automatically detect the active antenna and switch over!

[Most GPS antennas use SMA connectors so you may want to pick up one of our uFL to SMA adapters. \(http://adafru.it/851\)](http://adafru.it/851)

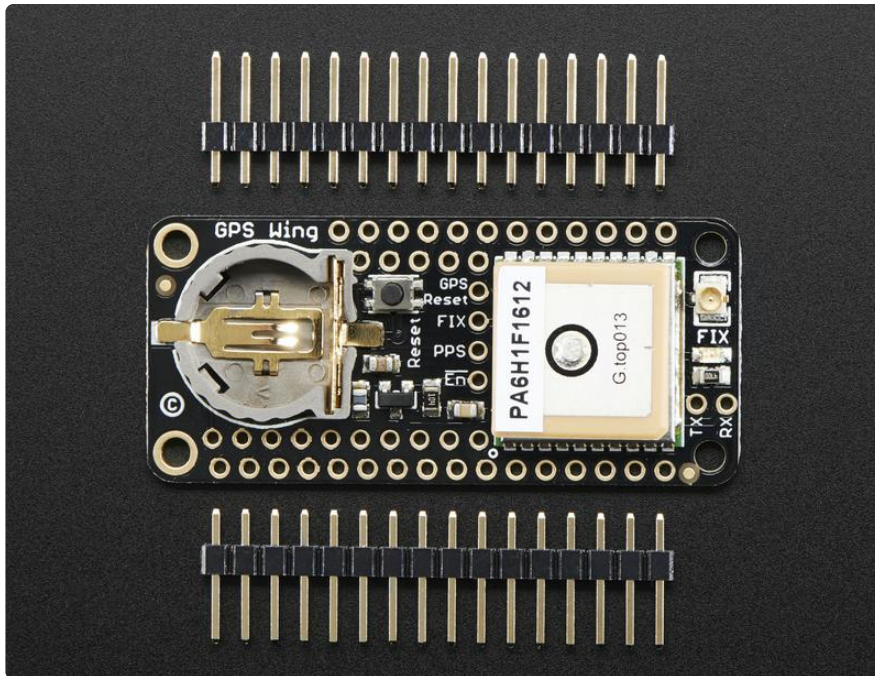
We added some extra goodies to make this GPS FeatherWing better than a breakout: a FET-driven ENABLE pin so you can turn off the module using any microcontroller pin for low power use, a CR1220 coin cell holder to keep the RTC running and allow warm starts and a tiny bright red LED. The LED blinks at about 1Hz while it's searching for satellites and blinks once every 15 seconds when a fix is found to conserve power.



Module specs:

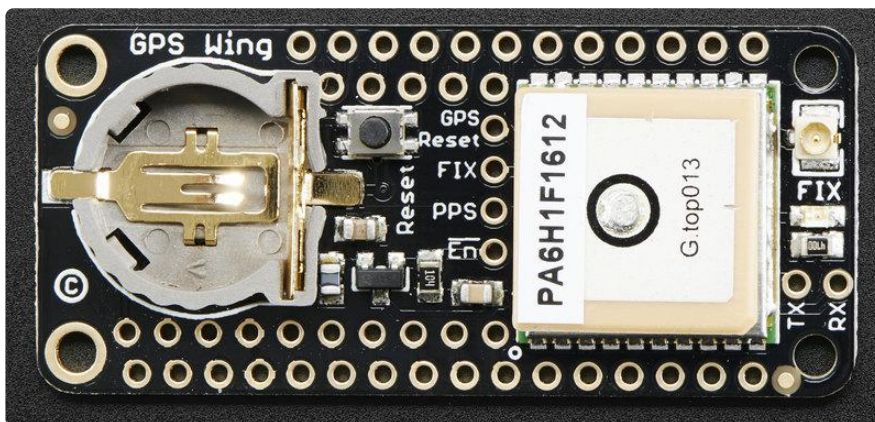
- Satellites: 22 tracking, 66 searching
- Patch Antenna Size: 15mm x 15mm x 4mm
- Update rate: 1 to 10 Hz
- Position Accuracy: 1.8 meters
- Velocity Accuracy: 0.1 meters/s
- Warm/cold start: 34 seconds
- Acquisition sensitivity: -145 dBm
- Tracking sensitivity: -165 dBm
- Maximum Velocity: 515m/s
- Vin range: 3.0-5.5VDC
- MTK3339 Operating current: 25mA tracking, 20 mA current draw during navigation
- Output: NMEA 0183, 9600 baud default
- DGPS/WAAS/EGNOS supported

- FCC E911 compliance and AGPS support (Offline mode : EPO valid up to 14 days)
- Up to 210 PRN channels
- Jammer detection and reduction
- Multi-path detection and compensation

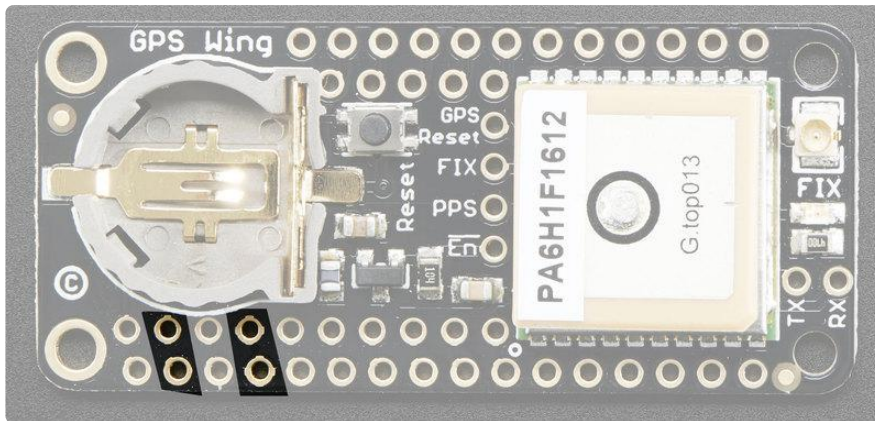


Comes as a fully assembled FeatherWing with GPS module and a coin cell holder. However, the 12mm coin cell is not included - it isn't required but if you would like a battery backup, a CR1220 coin battery must be purchased separately. We also toss in some header so you can solder it in and plug into your Feather

Pinouts

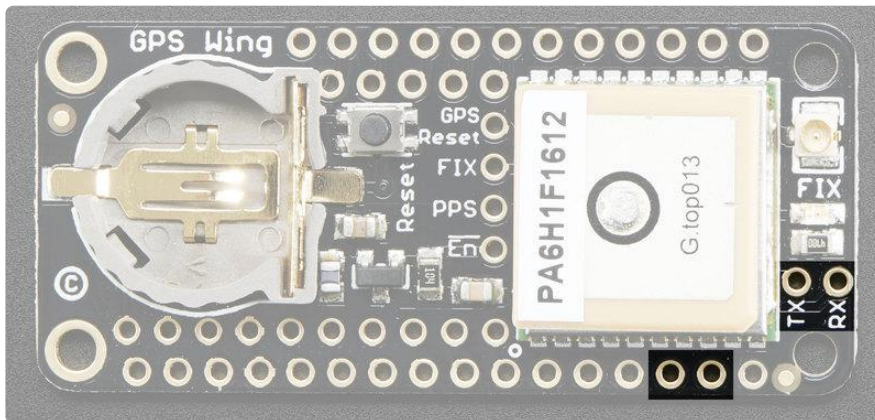


Power Pins



The GPS module runs from +3.3V power and uses 3V logic. the GPS is powered directly from the 3V and GND pins on the bottom left of the Feather. Each Feather has a regulator to provide clean 3V power from USB or battery power.

Serial Data Pins

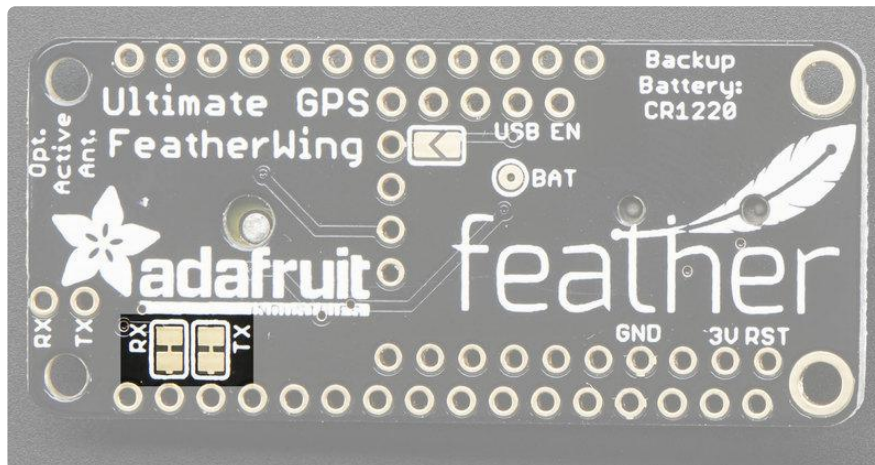


The GPS module, like pretty much all GPS's, communicates over UART serial. It sends ASCII NMEA sentences from the GPS TX pin to the microcontroller RX pin and can be controlled to change its data output from the GPS RX pin. Logic level is 3.3V for both.

The baud rate by default is 9600 baud, but you can configure the module to use different baud rate if desired

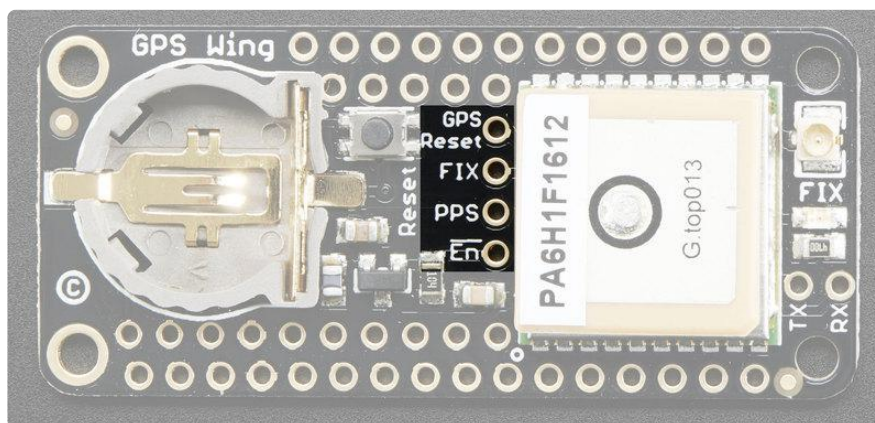
The GPS is wired directly to the Serial pins at the bottom right of the Feather. Note that on the ESP8266 Feather this is used for bootloading so the GPS module is not recommended for use with the ESP8266! The other Feathers use USB for bootloading, so the hardware Serial port is available.

If you need to connect to a different set of pins, you can cut the RX and TX jumpers on the bottom of the board



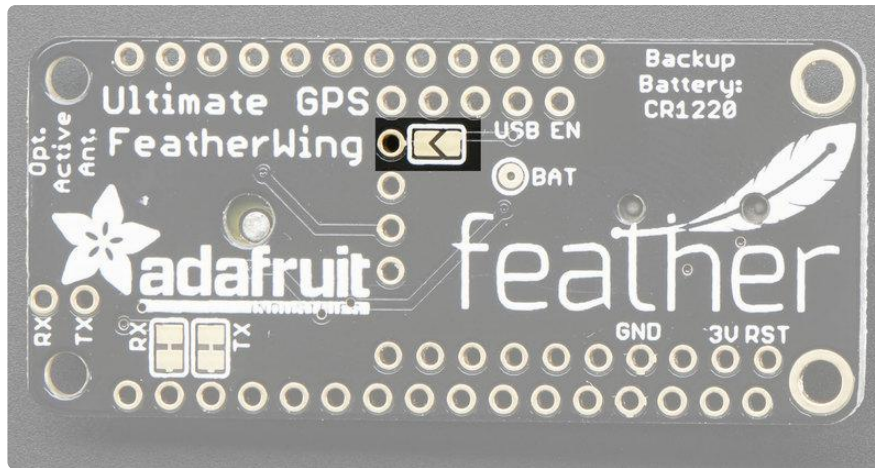
And then wire your desired pins to the RX and TX breakouts right next to the FIX LED

GPS Breakouts



The GPS module has some more pins you can use:

GPS Reset - you can use this to manually reset the GPS module if you set the baud rate to something inscrutable or you just want to 'kick it'. Reset by pulling low. Note that pulling reset low does not put the GPS into a low power state, you'll want to disable it instead (see EN). There's a jumper on the back if you want to connect the GPS reset to the microcontroller reset line

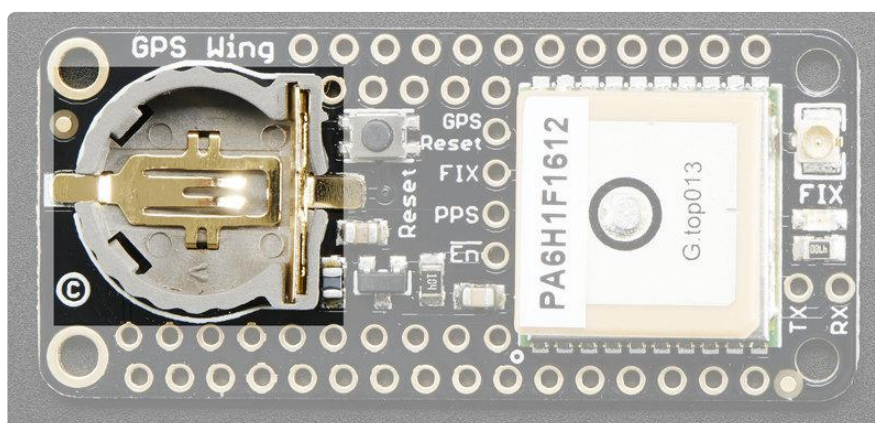


FIX is an output pin - it is the same pin as the one that drives the red FIX LED. When there is no fix, the FIX pin is going to pulse up and down once every second. When there is a fix, the pin is low (0V) for most of the time, once every 15 seconds it will pulse high for 200 milliseconds

PPS is a "pulse per second" output. Most of the time it is at logic low (ground) and then it pulses high (3.3V) once a second, for 50-100ms, so it should be easy for a microcontroller to sync up to it

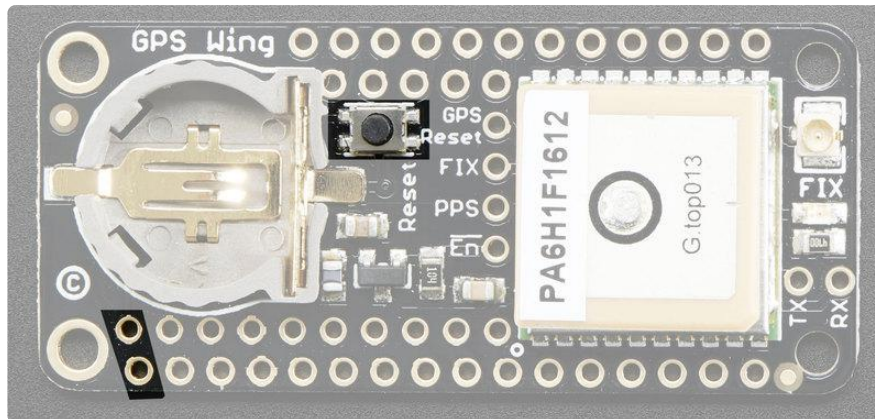
EN is a true 'power disable' control line you can use to completely cut power to the GPS module. This is good if you need to run at ultra-low-power modes. By default this is pulled low (enabled). So pull high to disable the GPS.

Coin Battery



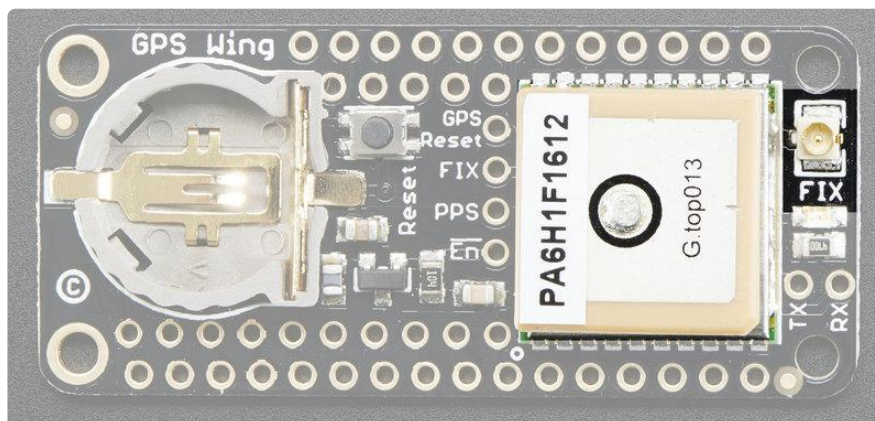
The GPS does not require but does benefit by having a coin cell backup battery. You can install any "CR1220" sized battery into the holder. The GPS will automatically detect the battery and use it as a backup for the ephemeris memory

Reset Button



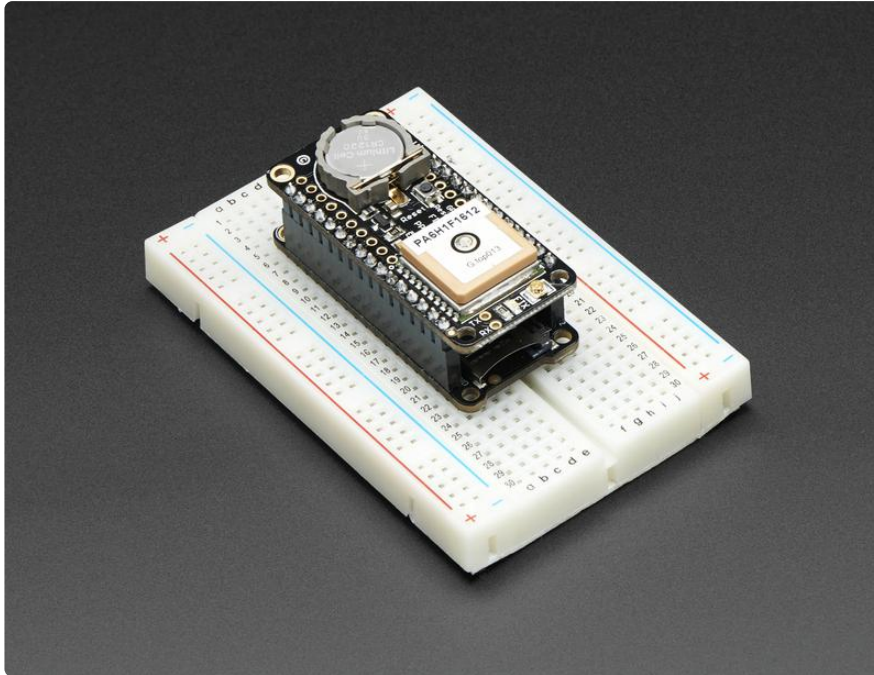
There is a small button that will connect the microcontroller RESET pin to ground for resetting it. Handy to restart the Feather. Note that this is not connected to GPS reset unless you short the jumper on the back!

Antennas



You have two options for an antenna. The GPS module has an antenna on it already, that's the square tan ceramic thing on the left side. If you plug an active GPS antenna into the uFL connector on the very right, the module will automatically switch over to the external antenna.

Basic RX-TX Test



The first, and simplest test, is just to echo data back and forth using the Feather's USB connection to read the GPS data out. The nice thing about this demo is no library is required.

This doesn't work with the ESP8266, ATmega328P or nRF52832 Feather! It will work on the nRF52840, m32u4, M0, M4, Teensy, ESP32 and others

Upload the following to your Feather, it will work with the Feather 32u4, M0, M4, WICED, etc. Anything that does not have the RX/TX pins used to communicate.

```
// Test code for Ultimate GPS Using Hardware Serial
// (e.g. GPS for Leonardo, Flora or FeatherWing)
//
// This code shows how to test a passthru between USB and hardware serial
//
// Tested and works great with the Adafruit GPS FeatherWing
// -----> https://www.adafruit.com/products/3133
// or Flora GPS
// -----> https://www.adafruit.com/products/1059
// but also works with the shield, breakout
// -----> https://www.adafruit.com/products/1272
// -----> https://www.adafruit.com/products/746
//
// Pick one up today at the Adafruit electronics shop
// and help support open source hardware & software! -ada

// what's the name of the hardware serial port?
#define GPSSerial Serial1
```

```

void setup() {
  // wait for hardware serial to appear
  while (!Serial);

  // make this baud rate fast enough to we aren't waiting on it
  Serial.begin(115200);

  // 9600 baud is the default rate for the Ultimate GPS
  GPSSerial.begin(9600);
}

void loop() {
  if (Serial.available()) {
    char c = Serial.read();
    GPSSerial.write(c);
  }
  if (GPSSerial.available()) {
    char c = GPSSerial.read();
    Serial.write(c);
  }
}

```

Now open up the serial monitor from the Arduino IDE and be sure to select 115200 baud in the drop down. You should see text like the following:

```

$GPGGA,000106.799,,,,,0,0,,M,M,,*48
$GPGSA,A,1,,,,,,,,,,,,,*1E
$GPRMC,000106.799,V,,,,,0.00,0.00,060180,,N*42
$GPVTG,0.00,T,,M,0.00,N,0.00,K,N*32
$GPGGA,000107.799,,,,,0,0,,M,M,,*49
$GPGSA,A,1,,,,,,,,,,,,,*1E
$GPRMC,000107.799,V,,,,,0.00,0.00,060180,,N*43
$GPVTG,0.00,T,,M,0.00,N,0.00,K,N*32
$GPGGA,000108.799,,,,,0,0,,M,M,,*46
$GPGSA,A,1,,,,,,,,,,,,,*1E
$GPRMC,000108.799,V,,,,,0.00,0.00,060180,,N*4C
$GPVTG,0.00,T,,M,0.00,N,0.00,K,N*32
$GPGGA,000109.799,,,,,0,0,,M,M,,*47
$GPGSA,A,1,,,,,,,,,,,,,*1E
$GPGSV,1,1,00*79
$GPRMC,000109.799,V,,,,,0.00,0.00,060180,,N*4D
$GPVTG,0.00,T,,M,0.00,N,0.00,K,N*32
$GPGGA,000110.799,,,,,0,0,,M,M,,*4F
$GPGSA,A,1,,,,,,,,,,,,,*1E
$GPRMC,000110.799,V,,,,,0.00,0.00,060180,,N*45
$GPVTG,0.00,T,,M,0.00,N,0.00,K,N*32
$GPGGA,000111.799,,,,,0,0,,M,M,,*4E
$GPGSA,A,1,,,,,,,,,,,,,*1E
$GPRMC,000111.799,V,,,,,0.00,0.00,060180,,N*44
$GPVTG,0.00,T,,M,0.00,N,0.00,K,N*32

```

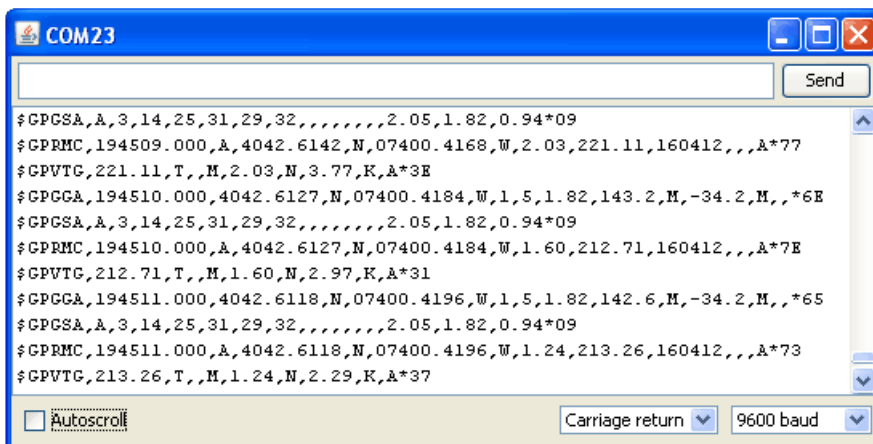
This is the raw GPS "NMEA sentence" output from the module. There are a few different kinds of NMEA sentences, the most common ones people use are the \$GPRMC (Global Positioning Recommended Minimum Coordinates or something like that) and the \$GPGGA sentences. These two provide the time, date, latitude, longitude, altitude, estimated land speed, and fix type. Fix type indicates whether the GPS has locked onto the satellite data and received enough data to determine the location (2D fix) or location+altitude (3D fix).

[For more details about NMEA sentences and what data they contain, check out this site \(https://adafru.it/kMb\)](https://adafru.it/kMb)

If you look at the data in the above window, you can see that there are a lot of commas, with no data in between them. That's because this module is on my desk, indoors, and does not have a 'fix'. To get a fix, we need to put the module outside.

GPS modules will always send data EVEN IF THEY DO NOT HAVE A FIX! In order to get 'valid' (not-blank) data you must have the GPS module directly outside, with the square ceramic antenna pointing up with a clear sky view. In ideal conditions, the module can get a fix in under 45 seconds. however depending on your location, satellite configuration, solar flares, tall buildings nearby, RF noise, etc it may take up to half an hour (or more) to get a fix! This does not mean your GPS module is broken, the GPS module will always work as fast as it can to get a fix.

If you can get a really long USB cord (or attach a GPS antenna) and stick the GPS out a window, so its pointing at the sky, eventually the GPS will get a fix and the window data will change over to transmit valid data like this:



Look for the line that says \$GPRMC,194509.000,A,4042.6142,N,07400.4168,W,2.03,221.11,160412,,,A*77

This line is called the RMC (Recommended Minimum) sentence and has pretty much all of the most useful data. Each chunk of data is separated by a comma.

The first part 194509.000 is the current time GMT (Greenwich Mean Time). The first two numbers 19 indicate the hour (1900h, otherwise known as 7pm) the next two are the minute, the next two are the seconds and finally the milliseconds. So the time when this screenshot was taken is 7:45 pm and 9 seconds. The GPS does not know what time zone you are in, or about "daylight savings" so you will have to do the calculation to turn GMT into your timezone

The second part is the 'status code', if it is a V that means the data is Void (invalid). If it is an A that means its Active (the GPS could get a lock/fix)

The next 4 pieces of data are the geolocation data. According to the GPS, my location is 4042.6142,N (Latitude 40 degrees, 42.6142 decimal minutes North) & 07400.4168,W. (Longitude 74 degrees, 0.4168 decimal minutes West) To look at this location in Google maps, type +40 42.6142', -74 00.4168' into the [google maps search box \(https://adafru.it/aMI\)](#) . Unfortunately gmaps requires you to use +/- instead of NSWE notation. N and E are positive, S and W are negative.

People often get confused because the GPS is working but is "5 miles off" - this is because they are not parsing the lat/long data correctly. Despite appearances, the geolocation data is NOT in decimal degrees. It is in degrees and minutes in the following format: Latitude: DDMM.MMMM (The first two characters are the degrees.) Longitude: DDDMM.MMMM (The first three characters are the degrees.)

The next data is the ground speed in knots. We're going 2.03 knots

After that is the tracking angle, this is meant to approximate what 'compass' direction we're heading at based on our past travel

The one after that is 160412 which is the current date (16th of April, 2012).

Finally there is the *XX data which is used as a data transfer checksum

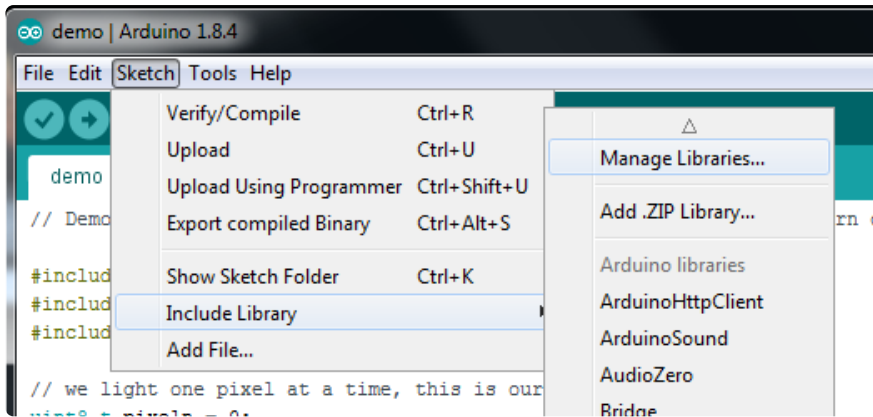
Once you get a fix using your GPS module, verify your location with google maps (or some other mapping software). Remember that GPS is often only accurate to 5-10 meters and worse if you're indoors or surrounded by tall buildings.

Arduino Library

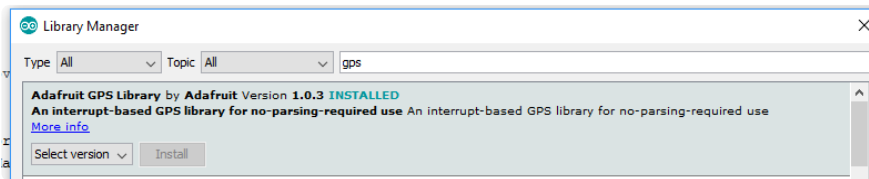
Once you've gotten the GPS module tested with direct rx-tx, we can go forward and do some more advanced parsing.

Download the Adafruit GPS library. This library does a lot of the 'heavy lifting' required for receiving data from GPS modules, such as reading the streaming data in a background interrupt and auto-magically parsing it. [To see the code, visit the GitHub repository \(https://adafru.it/aMm\)](#)

Install by opening the Arduino library manager



Search for Adafruit GPS and install

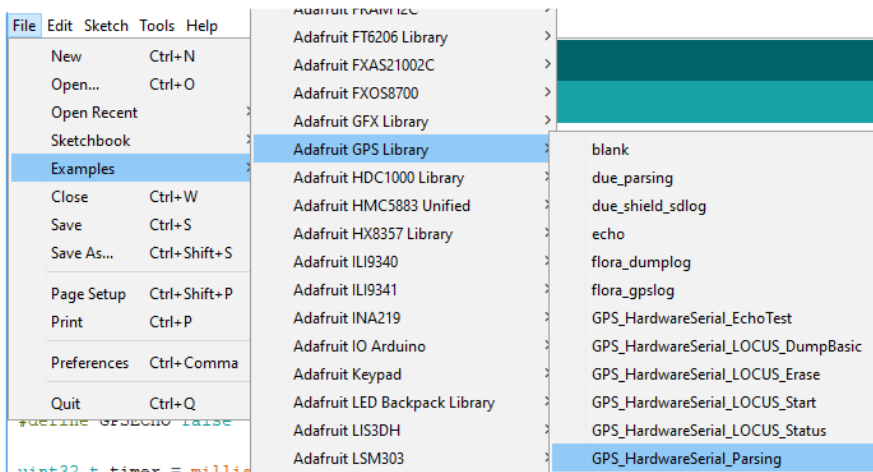


Library installation is a frequent stumbling block...if you need assistance, our [All About Arduino Libraries \(https://adafru.it/dit\)](https://adafru.it/dit) guide spells it out in detail!

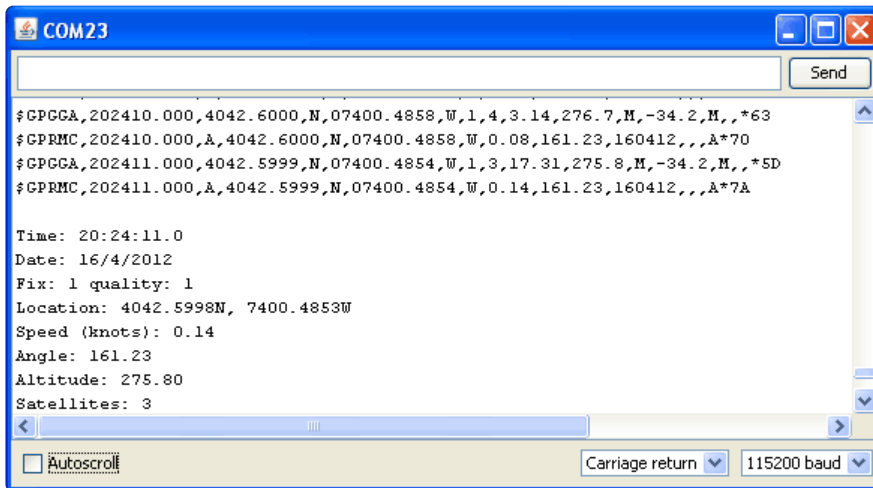
Parsed Data

Since all GPS's output NMEA sentences and often for our projects we need to extract the actual data from them, we've simplified the task tremendously when using the Adafruit GPS library. By having the library read, store and parse the data in a background interrupt it becomes trivial to query the library and get the latest updated information without any icky parsing work.

Open up the File→Examples→Adafruit_GPS→GPS_HardwareSerial_Parsing sketch and upload it to the Arduino.



Then open up the serial monitor.



In this sketch, we call `GPS.read()` constantly in the main loop (if you can, get this to run once a millisecond in an interrupt). Then in the main loop we can ask if a new chunk of data has been received by calling `GPS.newNMEAreceived()`, if this returns true then we can ask the library to parse that data with `GPS.parse(GPS.lastNMEA())`.

We do have to keep querying and parsing in the main loop - its not possible to do this in an interrupt because then we'd be dropping GPS data by accident.

Once data is parsed, we can just ask for data from the library like `GPS.day`, `GPS.month` and `GPS.year` for the current date. `GPS.fix` will be 1 if there is a fix, 0 if there is none. If we have a fix then we can ask for `GPS.latitude`, `GPS.longitude`, `GPS.speed` (in knots, not mph or k/hr!), `GPS.angle`, `GPS.altitude` (in meters) and `GPS.satellites` (number of satellites)

This should make it much easier to have location-based projects. We suggest keeping the update rate at 1Hz and request that the GPS only output RMC and GGA as the parser does not keep track of other data anyways.

CircuitPython Library

You can easily use a GPS module like the ultimate GPS FeatherWing with CircuitPython code. Python code is well suited for parsing and processing the text output from GPS modules and this [Adafruit CircuitPython GPS \(https://adafru.it/BuR\)](https://adafru.it/BuR) module handles most of the work for you!

First make sure your Feather is running CircuitPython firmware, and the GPS FeatherWing is assembled and connected to the Feather board. By default the

FeatherWing will automatically use the Feather's RX and TX pins for a hardware serial connection.

Note: Just like with Arduino the ESP8266 and nRF52832 Feather shares its serial RX and TX pins with the USB serial connection and can be difficult to use with GPS modules. In particular you won't be able to use the REPL and other core tools like ampy to copy files if a GPS FeatherWing is connected. It's recommended not to use the ESP8266 or nRF52832 with the GPS FeatherWing.

Next you'll need to install the [Adafruit CircuitPython GPS \(https://adafru.it/BuR\)](https://adafru.it/BuR) library on your CircuitPython board

First make sure you are running the [latest version of Adafruit CircuitPython \(https://adafru.it/Em8\)](https://adafru.it/Em8) for your board.

Next you'll need to install the necessary libraries to use the hardware--carefully follow the steps to find and install these libraries from [Adafruit's CircuitPython library bundle \(https://adafru.it/ENC\)](https://adafru.it/ENC). For example the Circuit Playground Express guide has [a great page on how to install the library bundle \(https://adafru.it/ABU\)](https://adafru.it/ABU) for both express and non-express boards.

Remember for non-express boards like the Trinket M0, Gemma M0, and Feather/Metro M0 basic you'll need to manually install the necessary libraries from the bundle:

- adafruit_gps.mpy

You can also download the adafruit_gps.mpy file from the [Adafruit CircuitPython GPS releases page \(https://adafru.it/BuS\)](https://adafru.it/BuS).

Before continuing make sure your board's lib folder or root filesystem has the adafruit_gps.mpy, files and folders copied over.

Usage

To demonstrate the usage of the GPS module in CircuitPython let's look at a complete program example. the simple.py file from the module's examples. Save this file as main.py on your board, then open the REPL connection to the board to see its output:

```
# SPDX-FileCopyrightText: 2021 ladyada for Adafruit Industries
# SPDX-License-Identifier: MIT

# Simple GPS module demonstration.
```



```

"Fix timestamp: {}/{}/{} {:02}:{:02}:{:02}".format(
    gps.timestamp_utc.tm_mon, # Grab parts of the time from the
    gps.timestamp_utc.tm_mday, # struct_time object that holds
    gps.timestamp_utc.tm_year, # the fix time. Note you might
    gps.timestamp_utc.tm_hour, # not get all data like year, day,
    gps.timestamp_utc.tm_min, # month!
    gps.timestamp_utc.tm_sec,
)
)
print("Latitude: {0:.6f} degrees".format(gps.latitude))
print("Longitude: {0:.6f} degrees".format(gps.longitude))
print("Fix quality: {}".format(gps.fix_quality))
# Some attributes beyond latitude, longitude and timestamp are optional
# and might not be present. Check if they're None before trying to use!
if gps.satellites is not None:
    print("# satellites: {}".format(gps.satellites))
if gps.altitude_m is not None:
    print("Altitude: {} meters".format(gps.altitude_m))
if gps.speed_knots is not None:
    print("Speed: {} knots".format(gps.speed_knots))
if gps.track_angle_deg is not None:
    print("Track angle: {} degrees".format(gps.track_angle_deg))
if gps.horizontal_dilution is not None:
    print("Horizontal dilution: {}".format(gps.horizontal_dilution))
if gps.height_geoid is not None:
    print("Height geoid: {} meters".format(gps.height_geoid))

```

When the code runs it will print a message every second to the REPL, either an update that it's still waiting for a GPS fix:

```

Waiting for fix...
Waiting for fix...
Waiting for fix...
Waiting for fix...
Waiting for fix...
Waiting for fix...
Waiting for fix...
Waiting for fix...

```

Or once a fix has been established (make sure the GPS module has a good view of the sky!) it will print details about the current location and other GPS data:

```

=====
Fix timestamp: 11/8/2017 19:28:13
Latitude: 42.345678 degrees
Longitude: -71.123456 degrees
Fix quality: 1
# satellites: 5
Altitude: 23.7 meters
Speed: 0.67 knots
Track angle: 252.71 degrees
Horizontal dilution: 1.78
Height geo ID: -17.2 meters

```

Let's look at the code in a bit more detail to understand how it works. First the example needs to import a few modules like the built-in `busio` and `board` modules that access serial ports and other hardware:


```
#gps.send_command(b'PMTK220,2000')
# You can also speed up the rate, but don't go too fast or else you can lose
# data during parsing. This would be twice a second (2hz, 500ms delay):
#gps.send_command(b'PMTK220,500')
```

If you want you can send other custom commands to the GPS module with the `send_command` function shown above. You don't need to worry about adding a NMEA checksum to your command either, the function will do this automatically (or not, set a `dd_checksum=False` as a parameter and it will skip the checksum addition).

Now we can jump into a main loop that continually updates data from the GPS module and prints out status. The most important part of this loop is calling the GPS update function:

```
# Make sure to call gps.update() every loop iteration and at least twice
# as fast as data comes from the GPS unit (usually every second).
# This returns a bool that's true if it parsed new data (you can ignore it
# though if you don't care and instead look at the has_fix property).
gps.update()
```

Like the comments mention you must call `update` every loop iteration and ideally multiple times a second. Each time you call `update` it allows the GPS library code to read new data from the GPS module and update its state. Since the GPS module is always sending data you have to be careful to constantly read data or else you might start to lose data as buffers are filled.

You can check the `has_fix` property to see if the module has a GPS location fix, and if so there are a host of attributes to read like latitude and longitude (available in degrees):

```
if not gps.has_fix:
    # Try again if we don't have a fix yet.
    print('Waiting for fix...')
    continue
# We have a fix! (gps.has_fix is true)
# Print out details about the fix like location, date, etc.
print('=' * 40) # Print a separator line.
print('Fix timestamp: {}/{} / {} {:02}:{:02}:{:02}'.format(
    gps.timestamp_utc.tm_mon, # Grab parts of the time from the
    gps.timestamp_utc.tm_mday, # struct_time object that holds
    gps.timestamp_utc.tm_year, # the fix time. Note you might
    gps.timestamp_utc.tm_hour, # not get all data like year, day,
    gps.timestamp_utc.tm_min, # month!
    gps.timestamp_utc.tm_sec))
print('Latitude: {} degrees'.format(gps.latitude))
print('Longitude: {} degrees'.format(gps.longitude))
print('Fix quality: {}'.format(gps.fix_quality))
# Some attributes beyond latitude, longitude and timestamp are optional
# and might not be present. Check if they're None before trying to use!
if gps.satellites is not None:
    print('# satellites: {}'.format(gps.satellites))
if gps.altitude_m is not None:
    print('Altitude: {} meters'.format(gps.altitude_m))
if gps.track_angle_deg is not None:
```

```
print('Speed: {} knots'.format(gps.speed_knots))
if gps.track_angle_deg is not None:
    print('Track angle: {} degrees'.format(gps.track_angle_deg))
if gps.horizontal_dilution is not None:
    print('Horizontal dilution: {}'.format(gps.horizontal_dilution))
if gps.height_geoid is not None:
```

Notice some of the attributes like `altitude_m` are checked to be `None` before reading. This is a smart check to put in your code too because those attributes are sometimes not sent by a GPS module. If an attribute isn't sent by the module it will be given a `None`/null value and attempting to print or read it in Python will fail. The core attributes of latitude, longitude, and timestamp are usually always available (if you're using the example as-is) but they might not be if you turn off those outputs with a custom NMEA command!

That's all there is to reading GPS location with CircuitPython code!

Datalogging Example

Another handy task with GPS is logging all the raw output of the GPS module to a file. This is useful if you're importing the GPS data into a tool like Google Earth which can process raw NMEA sentences. You can perform this datalogging very easily with CircuitPython.

To store data you'll need to choose one of two options:

- Wire up a SD card holder to your board's SPI bus, or use a board with SD card holder built-in like the [Feather M0 Adalogger \(https://adafru.it/weP\)](https://adafru.it/weP). This is the recommended approach as it gives you a lot of space to store data and you can easily copy the data to your computer from the card.
- Store data in your board's internal filesystem. This requires a little more setup but allows you to save to a file on the internal filesystem of your CircuitPython board, right next to where code and other data files live. This is more limited because depending on your board you might only have a few kilobytes or megabytes of space available and GPS sentences will quickly add up (easily filling multiple megabytes within a few hours of logging).

Install SD Card Library

If you're storing data on a SD card you must ensure the SD card is wired to your board and you have installed the Adafruit SD card library. Luckily there's [an entire](#)

[guide to follow to learn about this process of connecting a SD card and installing the necessary library \(https://adafru.it/BuU\)](https://adafru.it/BuU). Be sure to carefully follow the guide so the card is connected, library installed, and you can confirm you're able to manually write data to the card from the Python prompt.

Enable Internal Filesystem Writes

If you're storing data on the internal filesystem you must carefully [follow the steps in the CPU temperature logging guide to enable writing to internal storage \(https://adafru.it/BuV\)](https://adafru.it/BuV). If you're writing to a SD card skip these steps and move on to look at the datalogging code below. Edit the boot.py on your board (creating it if it doesn't exist) and add these lines:

```
import digitalio
import board
import storage

switch = digitalio.DigitalInOut(board.D5)
switch.direction = digitalio.Direction.INPUT
switch.pull = digitalio.Pull.UP

# If the D5 is connected to ground with a wire
# you can edit files over the USB drive again.
storage.remount("/", not switch.value)
```

Remember once you remount("/") you cannot edit code over the USB drive anymore! That means you can't edit boot.py which is a bit of a conundrum. So we configure the boot.py to selectively mount the internal filesystem as writable based on a switch or even just alligator clip connected to ground. Like the [CPU temperature guide shows \(https://adafru.it/BuV\)](https://adafru.it/BuV). In this example we're using D5 but select any available pin.

This code will look at the D5 digital input when the board starts up and if it's connected to ground (use an alligator clip or wire, for example, to connect from D5 to board ground) it will disable internal filesystem writes and allow you to edit code over the USB drive as normal. Remove the alligator clip, reset the board, and the boot.py will switch to mounting the internal filesystem as writable so you can log images to it again (but not write any code!).

Remember when you enable USB drive writes (by connecting D5 to ground at startup) you cannot write files to the internal filesystem and any code in your main.py that attempts to do so (like the example below) will fail. Keep this in mind as you edit code--once you modify code you need to remove the alligator clip, reset the board to re-enable internal filesystem writes, and then watch the output of your program.

If you ever get stuck, you can follow the steps mentioned in <https://learn.adafruit.com/cpu-temperature-logging-with-circuit-python/writing-to-the-filesystem> to remove boot.py from the REPL if you need to go back and edit code!

Datalogging Example Code

The GPS library examples have a datalogging.py file you can edit and save as a main.py on your board:

```
# SPDX-FileCopyrightText: 2021 ladyada for Adafruit Industries
# SPDX-License-Identifier: MIT

# Simple GPS datalogging demonstration.
# This example uses the GPS library and to read raw NMEA sentences
# over I2C or UART from the GPS unit and dumps them to a file on an SD card
# (recommended), microcontroller internal storage (be careful as only a few
# kilobytes are available), or to a filesystem.
# If you are using a microcontroller, before writing to internal storage you
# MUST carefully follow the steps in this guide to enable writes to the
# internal filesystem:
# https://learn.adafruit.com/adafruit-ultimate-gps-featherwing/circuitpython-
library
import board
import busio
import adafruit_gps

# Path to the file to log GPS data. By default this will be appended to
# which means new lines are added at the end and all old data is kept.
# Change this path to point at internal storage (like '/gps.txt') or SD
# card mounted storage ('/sd/gps.txt') as desired.
LOG_FILE = "gps.txt" # Example for writing to internal path gps.txt

# File mode for opening the log file. Mode 'ab' means append or add new lines
# to the end of the file rather than erasing it and starting over. If you'd
# like to erase the file and start clean each time use the value 'wb' instead.
LOG_MODE = "ab"

# If writing to SD card on a microcontroller customize and uncomment these
# lines to import the necessary library and initialize the SD card:
# NOT for use with a single board computer like Raspberry Pi!
"""
import adafruit_sdcard
import digitalio
import storage

SD_CS_PIN = board.D10 # CS for SD card using Adalogger Featherwing
spi = busio.SPI(board.SCK, MOSI=board.MOSI, MISO=board.MISO)
sd_cs = digitalio.DigitalInOut(SD_CS_PIN)
sdcard = adafruit_sdcard.SDCard(spi, sd_cs)
vfs = storage.VfsFat(sdcard)
storage.mount(vfs, '/sd') # Mount SD card under '/sd' path in filesystem.
LOG_FILE = '/sd/gps.txt' # Example for writing to SD card path /sd/gps.txt
"""

# Create a serial connection for the GPS connection using default speed and
# a slightly higher timeout (GPS modules typically update once a second).
# These are the defaults you should use for the GPS FeatherWing.
# For other boards set RX = GPS module TX, and TX = GPS module RX pins.
uart = busio.UART(board.TX, board.RX, baudrate=9600, timeout=10)

# If using a USB/Serial converter, use pyserial and update the serial
```



```

# port name to match the serial connection for the GPS!
# import serial
# uart = serial.Serial("/dev/ttyUSB0", baudrate=9600, timeout=10)

# If using I2C, we'll create an I2C interface to talk to using default pins
# i2c = board.I2C()

# Create a GPS module instance.
gps = adafruit_gps.GPS(uart) # Use UART/pyserial
# gps = adafruit_gps.GPS_GtopI2C(i2c) # Use I2C interface

# Main loop just reads data from the GPS module and writes it back out to
# the output file while also printing to serial output.
with open(LOG_FILE, LOG_MODE) as outfile:
    while True:
        sentence = gps.readline()
        if not sentence:
            continue
        print(str(sentence, "ascii").strip())
        outfile.write(sentence)
        outfile.flush()

```

By default this example expects to log GPS NMEA sentences to a file on the internal storage system at /gps.txt. New sentences will be appended to the end of the file every time the example starts running.

If you'd like to instead write to the SD card take note to uncomment the appropriate lines mentioned in the comments:

```

# Path to the file to log GPS data. By default this will be appended to
# which means new lines are added at the end and all old data is kept.
# Change this path to point at internal storage (like '/gps.txt') or SD
# card mounted storage ('/sd/gps.txt') as desired.
#LOG_FILE = '/gps.txt' # Example for writing to internal path /gps.txt
LOG_FILE = '/sd/gps.txt' # Example for writing to SD card path /sd/gps.txt

```

And further below:

```

# If writing to SD card customize and uncomment these lines to import the
# necessary library and initialize the SD card:
SD_CS_PIN = board.SD_CS # CS for SD card (SD_CS is for Feather Adalogger)
import adafruit_sdcard
spi = busio.SPI(board.SCK, MOSI=board.MOSI, MISO=board.MISO)
sd_cs = digitalio.DigitalInOut(SD_CS_PIN)
sdcard = adafruit_sdcard.SDCard(spi, sd_cs)
vfs = storage.VfsFat(sdcard)
storage.mount(vfs, '/sd') # Mount SD card under '/sd' path in filesystem.

```

Should all be uncommented and look as above. This will configure the code to write GPS NMEA data to the /sd/gps.txt file, appending new data to the end of the file.

Once the example is running as a main.py on your board open the serial REPL and you should see the raw NMEA sentences printed out:

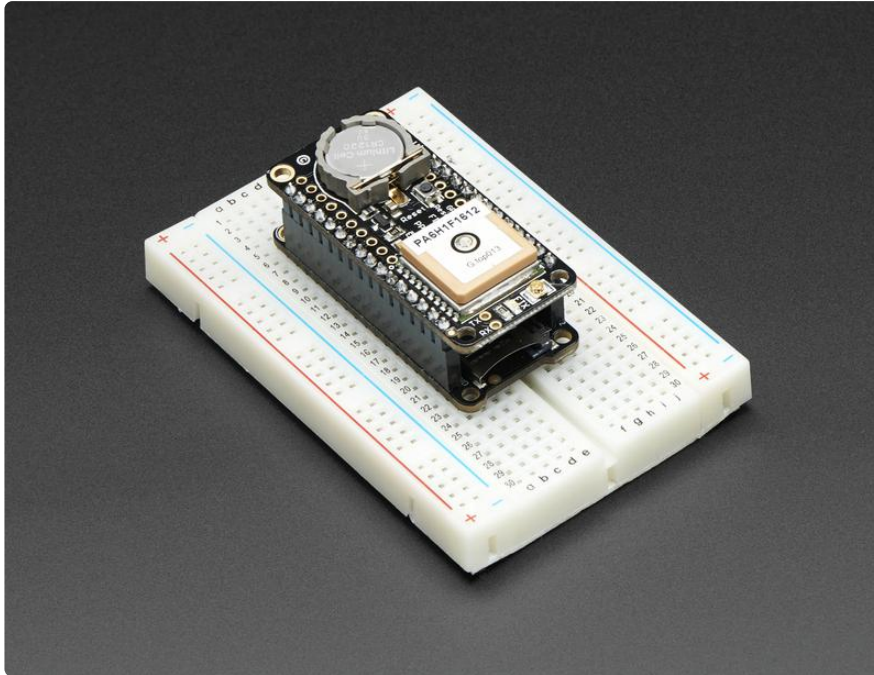
```
$GPGGA,000032.799,,,,,0,00,,M,,M,,*7E
$GPGSA,A,1,,,,,,,,,,,,,*1E
$GPRMC,000032.799,V,,,,,0.00,0.00,060180,,,N*44
$GPVTG,0.00,T,,M,0.00,N,0.00,K,N*32
$GPGGA,000033.799,,,,,0,00,,M,,M,,*7F
$GPGSA,A,1,,,,,,,,,,,,,*1E
$GPRMC,000033.799,V,,,,,0.00,0.00,060180,,,N*45
$GPVTG,0.00,T,,M,0.00,N,0.00,K,N*32
$GPGGA,000034.799,,,,,0,00,,M,,M,,*78
$GPGSA,A,1,,,,,,,,,,,,,*1E
$GPRMC,000034.799,V,,,,,0.00,0.00,060180,,,N*42
$GPVTG,0.00,T,,M,0.00,N,0.00,K,N*32
$GPGGA,000035.799,,,,,0,00,,M,,M,,*79
$GPGSA,A,1,,,,,,,,,,,,,*1E
$GPRMC,000035.799,V,,,,,0.00,0.00,060180,,,N*43
$GPVTG,0.00,T,,M,0.00,N,0.00,K,N*32
$GPGGA,000036.799,,,,,0,00,,M,,M,,*7A
$GPGSA,A,1,,,,,,,,,,,,,*1E
$GPGSV,1,1,00*79
$GPRMC,000036.799,V,,,,,0.00,0.00,060180,,,N*40
$GPVTG,0.00,T,,M,0.00,N,0.00,K,N*32
$GPGGA,000037.799,,,,,0,00,,M,,M,,*7B
$GPGSA,A,1,,,,,,,,,,,,,*1E
```

Check the gps.txt file (either under the root or /sd path depending on how you setup the example) in a text editor and you'll see the same raw NMEA sentences:

```
1 $GPGGA,003007.799,,,,,0,00,,M,,M,,*7B
2 $GPRMC,003007.799,V,,,,,0.00,0.00,060180,,,N*41
3 $GPGGA,003009.799,,,,,0,00,,M,,M,,*75
4 $GPRMC,003009.799,V,,,,,0.00,0.00,060180,,,N*4F
5 $GPGGA,003011.799,,,,,0,00,,M,,M,,*7C
6 $GPRMC,003011.799,V,,,,,0.00,0.00,060180,,,N*46
7 $GPGGA,003013.799,,,,,0,00,,M,,M,,*7E
8 $GPRMC,003013.799,V,,,,,0.00,0.00,060180,,,N*44
9 $GPGGA,003015.799,,,,,0,00,,M,,M,,*78
10 $GPRMC,003015.799,V,,,,,0.00,0.00,060180,,,N*42
11 $GPGGA,003017.799,,,,,0,00,,M,,M,,*7A
12 $GPRMC,003017.799,V,,,,,0.00,0.00,060180,,,N*40
13 $GPGGA,003019.799,,,,,0,00,,M,,M,,*74
14 $GPRMC,003019.799,V,,,,,0.00,0.00,060180,,,N*4E
15 $GPGGA,003023.799,,,,,0,00,,M,,M,,*7D
16 $GPRMC,003023.799,V,,,,,0.00,0.00,060180,,,N*47
17 $GPGGA,003025.799,,,,,0,00,,M,,M,,*7B
18 $GPRMC,003025.799,V,,,,,0.00,0.00,060180,,,N*41
19 $GPGGA,003027.799,,,,,0,00,,M,,M,,*79
20 $GPRMC,003027.799,V,,,,,0.00,0.00,060180,,,N*43
21 $GPGGA,003029.799,,,,,0,00,,M,,M,,*77
22 $GPRMC,003029.799,V,,,,,0.00,0.00,060180,,,N*4D
23 $GPGGA,003031.799,,,,,0,00,,M,,M,,*7E
24 $GPRMC,003031.799,V,,,,,0.00,0.00,060180,,,N*44
25 $GPGGA,003033.799,,,,,0,00,,M,,M,,*7C
26 $GPRMC,003033.799,V,,,,,0.00,0.00,060180,,,N*46
```

Awesome! That's all there is to basic datalogging of NMEA sentences with a GPS module and CircuitPython!

Battery Backup

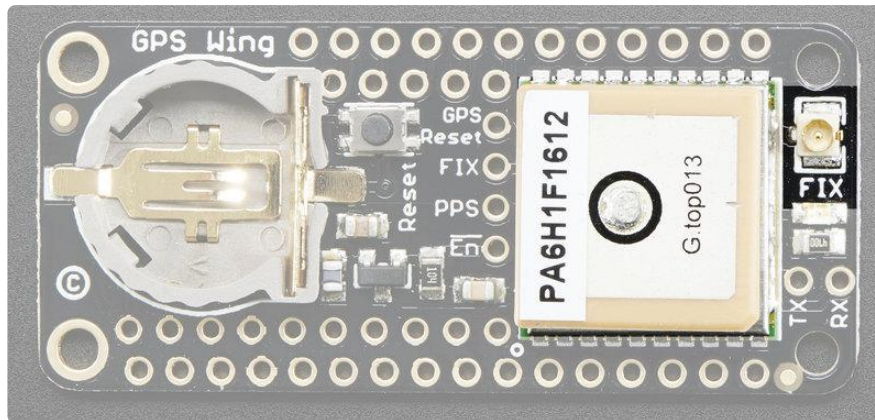


The GPS has a built in real time clock, which can keep track of time even when it power is lost and it doesn't have a fix yet. It can also help reduce fix times, if you expect to have a flakey power connection (say you're using solar or similar). To use the RTC, we need to install a battery. We provide the holder but the battery is not included. You can use any 12mm coin cell - these are popular and we also carry them in the Adafruit shop.

Normally, if the GPS loses power, it will revert to the factory default for baud rates, configuration, etc. A backup battery will mean that those defaults will not be lost!

The backup real-time-clock circuitry draws 7 μA (0.007 mA) so a CR1220 will last $40\text{mAh} / 0.007\text{mA} = 5,714$ hours = 240 days continuously. The backup battery is only used when there's no main 3V power to the GPS, so as long as it's only used as backup once in a while, it will last years

Antenna Options



All Ultimate GPS modules have a built in patch antenna - this antenna provides -165 dBm sensitivity and is perfect for many projects. However, if you want to place your project in a box, it might not be possible to have the antenna pointing up, or it might be in a metal shield, or you may need more sensitivity. In these cases, [you may want to use an external active antenna. \(http://adafru.it/960\)](http://adafru.it/960)

[Active antennas draw current, so they do provide more gain but at a power cost. Check the antenna datasheet for exactly how much current they draw - its usually around 10-20mA. \(http://adafru.it/960\)](http://adafru.it/960)

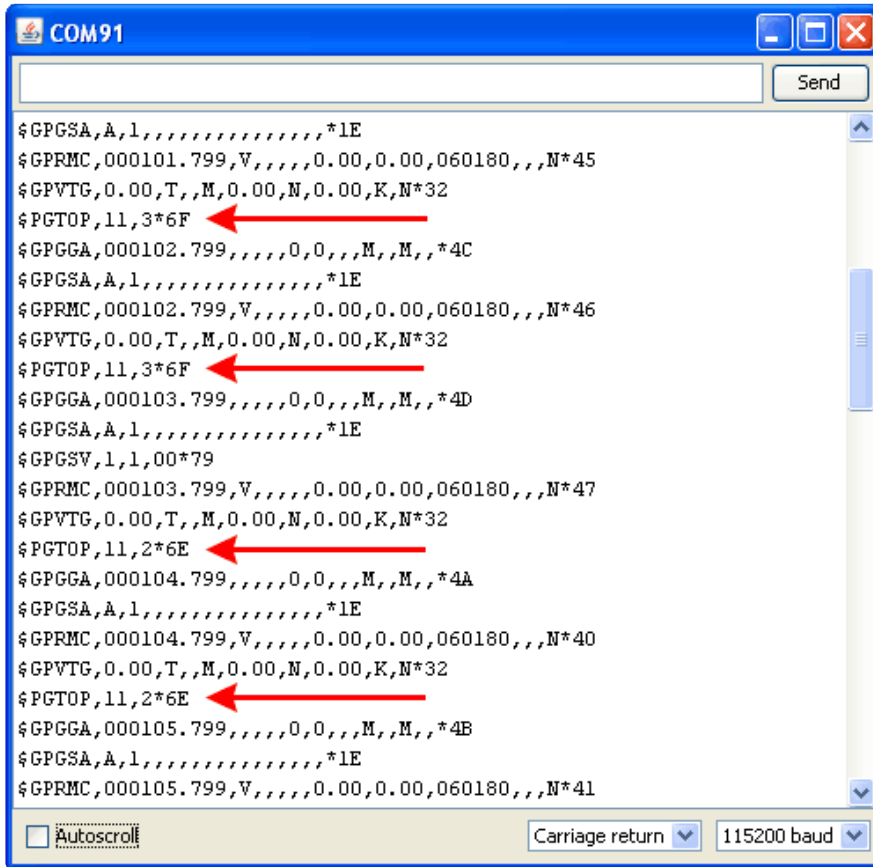
Most GPS antennas use SMA connectors, which are popular and easy to use. However, an SMA connector would be fairly big on the GPS breakout so we went with a uFL connector - which is lightweight, small and easy to manufacture. If you don't need an external antenna it wont add significant weight or space but [its easy to attach a uFL->SMA adapter cable \(http://adafru.it/851\)](http://adafru.it/851). Then connect the GPS antenna to the cable.

uFL connectors are small, delicate and are not rated for strain or tons of connections/disconnections. Once you attach a uFL adapter use strain relief to avoid ripping off the uFL

The Ultimate GPS will automagically detect an external active antenna is attached and 'switch over' - you do not need to send any commands

There is an output sentence that will tell you the status of the antenna. \$PGTOP,11,x where x is the status number. If x is 3 that means it is using the external antenna. If x is 2 it's using the internal antenna and if x is 1 there was an antenna short or problem.

On newer shields & modules, you'll need to tell the firmware you want to have this report output, you can do that by adding a `gps.sendCommand(PGCMD_ANTENNA)` around the same time you set the update rate/sentence output.



Resources

Datasheets

- [MTK3329/MTK3339 command set sheet \(https://adafru.it/e7A\)](https://adafru.it/e7A) for changing the fix data rate, baud rate, sentence outputs, etc!
- [PMTK 'complete' data \(https://adafru.it/uoE\)](https://adafru.it/uoE) sheet (like the above but with even more commands)
- [Datasheet for the PA6B \(MTK3329\) GPS module itself \(https://adafru.it/aMo\)](https://adafru.it/aMo)
- [Datasheet for the PA6C \(MTK3339\) GPS module itself \(https://adafru.it/aMp\)](https://adafru.it/aMp)
- [Datasheet for the PA6H \(MTK3339\) GPS module itself \(https://adafru.it/aPO\)](https://adafru.it/aPO)
- [MT3339 GPS PC Tool \(windows only\) \(https://adafru.it/uof\)](https://adafru.it/uof) and the [PC Tool manual \(https://adafru.it/uoA\)](https://adafru.it/uoA)
- [Sample code and spec sheet for the LOCUS built-in logger \(https://adafru.it/aTi\)](https://adafru.it/aTi)
- [LOCUS \(built-in-datalogging system\) user guide \(https://adafru.it/uoc\)](https://adafru.it/uoc)
- [Mini GPS tool \(windows only\) \(https://adafru.it/aMs\)](https://adafru.it/aMs)

More reading:

- [Trimble's GPS tutorial \(https://adafru.it/emh\)](https://adafru.it/emh)
- [Garmin's GPS tutorial \(https://adafru.it/aMv\)](https://adafru.it/aMv)

Adafruit GPS Library for Arduino

<https://github.com/adafruit/Adafruit-GPS-Library/> (<https://adafru.it/emi>)

EPO files for AGPS use

[Data format for EPO files \(https://adafru.it/uoB\)](https://adafru.it/uoB)

MTK_EPO_Nov_12_2014.zip

<https://adafru.it/eb1>

F.A.Q.

Can the Ultimate GPS be used for High Altitude? How can I know?

Modules shipped in 2013+ (and many in the later half of 2012) have firmware that has been tested by simulation at the GPS factory at 40km.

You can tell what firmware you have by sending the firmware query command `$PMTK605*31` (you can use the echo demo to send custom sentences to your GPS)

If your module replies with `AXN_2.10_3339_2012072601 5223` that means you have version #5223 which is the 40Km-supported firmware version. If the number is higher than 5223 then its even more recent, and should include the 40Km support as well

HOWEVER these modules are not specifically designed for high-altitude balloon use. People have used them successfully but since we (at Adafruit) have not personally tested them for hi-alt use, we do not in any way guarantee they are suitable for high altitude use.

Please do not ask us to 'prove' that they are good for high altitude use, we do not have any way to do so

If you want to measure high altitude with a GPS, please find a module that can promise/guarantee high altitude functionality

Is the Ultimate GPS affected by the 2019 Week Rollover issue?

The ultimate GPS (all firmware versions from 20110922_GTOP_EVK01_A2.10 and higher - any sold after 2011) have been tested to work fine through 2019.

They do not pass the 2038 rollover test, so you may need to update the firmware between now and 2038. This does not affect the 2019 rollover (there's one every ~20 years)

OK I want the latest firmware!

[Here is the binary of the 5632 firmware \(https://adafru.it/dR5\)](https://adafru.it/dR5), you can [use this tool to upload it using an FTDI or USB-TTL cable \(or direct wiring with FTDI\) \(https://adafru.it/uoF\)](https://adafru.it/uoF). We do not have a tutorial for updating the firmware, if you update the firmware and somehow brick the GPS, we do not offer replacements! Keep this in mind before performing the update process!

I've adapted the example code and my GPS NMEA sentences are all garbled and incomplete!

We use SoftwareSerial to read from the GPS, which is 'bitbang' UART support. It isn't super great on the Arduino and does work but adding too many delay()s and not calling the GPS data parser enough will cause it to choke on data.

If you are using Leonardo (or Micro/Flora/ATmega32u4) or Mega, consider using a HardwareSerial port instead of SoftwareSerial!

My GPS is giving me data but the location is wrong!

People often get confused because the GPS is working but is "5 miles off" - this is because they are not parsing the lat/long data correctly. Despite appearances, the geolocation data is NOT in decimal degrees. It is in degrees and minutes in the following format: Latitude: DDMM.MMMM (The first two characters are the degrees.) Longitude: DDDMM.MMMM (The first three characters are the degrees.)

How come I can't get the GPS to output at 10Hz?

The default baud rate to the GPS is 9600 - this can only do RMC messages at 10Hz. If you want more data output, you can increase the GPS baud rate (to 57600 for example) or go with something like 2 or 5Hz. There is a trade off with more data you want the GPS to output, the GPS baud rate, Arduino buffer/processing capability and update rate!

Experimentation may be necessary to get the optimal results. We suggest RMC only for 10Hz since we've tested it.

How come I can't set the RTC with the Adafruit RTC library?

The real time clock in the GPS is NOT 'writable' or accessible otherwise from the Arduino. Its in the GPS only! Once the battery is installed, and the GPS gets its first data reception from satellites it will set the internal RTC. Then as long as the battery is installed, you can read the time from the GPS as normal. Even without a proper "gps fix" the time will be correct.

The timezone cannot be changed, so you'll have to calculate local time based on UTC!

Do all GPS modules emit PPS pulses at the same time?

Under ideal conditions, GPS modules emit a PPS signal within 10ns of the beginning of each GPS second. That's only a best-case value though.

In practice, each GPS module's sync to the GPS clock system depends on the quality of the fix, how long the GPS module has had a fix, and the group of satellites the module uses for its fix. We've observed offsets of about 300ns between modules that have just acquired a fix, improving to less than 100ns after the modules have had a good fix (Signal-to-Noise ratio higher than 20 for the satellites the modules use for their fix) for ten minutes.

When two GPS modules used the same group of satellites for their fix, there was less than 30ns of offset between PPS pulses as soon as the modules acquired a fix.

Why am I not seeing anything on the PPS pin?

The PPS pin only starts outputting after a 3D fix. In our testing, it truly wants a 3D fix, not just a 2D fix. Therefore, the PPS output may not happen even though the FIX LED and pin are indicating a fix.

You can check the current mode via the \$GPGSA sentence. The second value must be a 3, as shown below:

```
$GPGSA,A,3,19,28,14,18,27,22,31,39,,,,,1.7,1.0,1.3*35
```

If the value is a 1 (Fix not available) or a 2 (2D), then the PPS pin may not output.

How can I read the PPS signal on the Ultimate GPS USB?

The PPS line is tied to the serial port RI (Ring Indicator) pin. You can read this with your serial-port interface code. For example here's a version in Python using pyserial:

```
import serial

ser = serial.Serial('/dev/ttyS34') # open serial port
print(ser.name) # check which port was really used

last_ri = ser.ri
while True:
    if ser.ri != last_ri:
        last_ri = ser.ri
        if last_ri:
            print("\n----- Pulse high -----")
        else:
            print("\n----- Pulse low -----")
    if ser.in_waiting:
        print(ser.read(ser.in_waiting).decode('utf-8'), end="")
```

Downloads

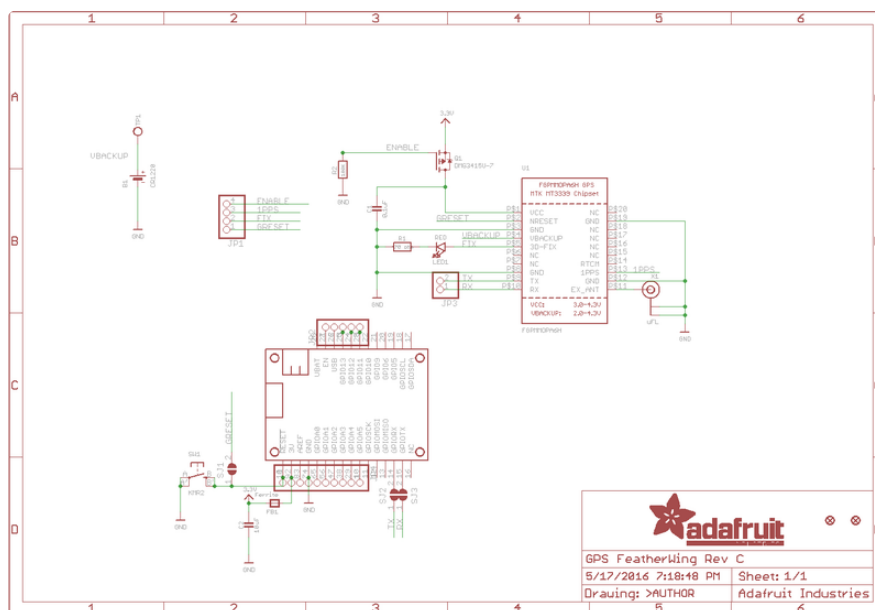
Datasheets & Files

- [EagleCAD PCB Files on GitHub \(https://adafru.it/nCQ\)](https://adafru.it/nCQ)

- [Fritzing object in Adafruit Fritzing library \(https://adafru.it/aP3\)](https://adafru.it/aP3)
- [Adafruit GPS Arduino Library \(https://adafru.it/nCR\)](https://adafru.it/nCR)
- [PA1616D antenna module Data Sheet \(https://adafru.it/ZeM\)](https://adafru.it/ZeM)
- [MTK3329/MTK3339 command set sheet \(https://adafru.it/qif\)](https://adafru.it/qif) for changing the fix data rate, baud rate, sentence outputs, etc!
- [LOCUS \(built-in-datalogging system\) user guide \(https://adafru.it/uoC\)](https://adafru.it/uoC)
- [Datasheet for the PA6H \(MTK3339\) GPS module itself \(https://adafru.it/ria\)](https://adafru.it/ria)
- [MT3339 GPS PC Tool \(windows only\) \(https://adafru.it/uoD\)](https://adafru.it/uoD) and the [PC Tool manual \(https://adafru.it/uoE\)](https://adafru.it/uoE)
- [Mini GPS tool \(windows only\) \(https://adafru.it/rid\)](https://adafru.it/rid)

Schematic

Click to embiggen



Fabrication Print

Dimensions in inches

